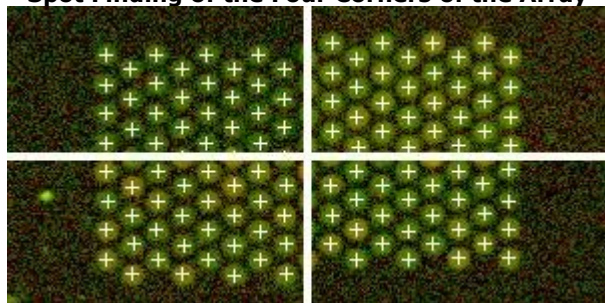


QC Report - Agilent Technologies : 2 Color CGH

| | | | |
|------------|--------------------------------|--------------------------------|-----------------------|
| Date | Friday, March 28, 2008 - 12:17 | BG Method | No Background |
| Image | US45102891_251471711301_S01 | Background Detrend | On(NegC) |
| Protocol | ChIP-v1_95_May07 (Read Only) | Multiplicative Detrend | True |
| User Name | Gergana | Dye Norm | Linear |
| Grid | 014717_D_F_20070820 | Linear DyeNorm Factor | 24.3(Red) 25.3(Green) |
| FE Version | 9.5.1.1 | Additive Error | 88(Red)228(Green) |
| | | Derivative of Log Ratio Spread | 1.48 |

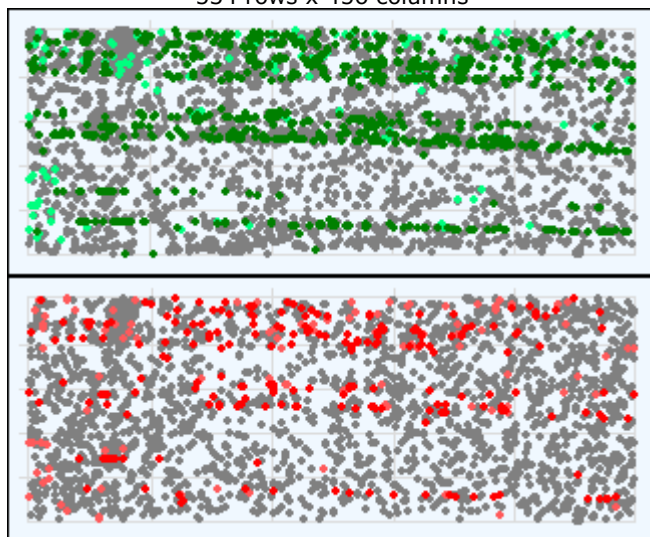
Spot Finding of the Four Corners of the Array**Grid Normal**

| Feature | Local Background | |
|-------------|------------------|-------|
| | Red | Green |
| Non Uniform | 224 | 873 |
| Population | 98 | 123 |

| | | | | |
|-------------|-----|-----|------|------|
| Non Uniform | 224 | 873 | 29 | 364 |
| Population | 98 | 123 | 4047 | 5970 |

Spatial Distribution of All Outliers on the Array

534 rows x 456 columns



FeatureNonUnif (Red or Green) = 888(0.36%)

GeneNonUnif (Red or Green) = 873 (0.368 %)

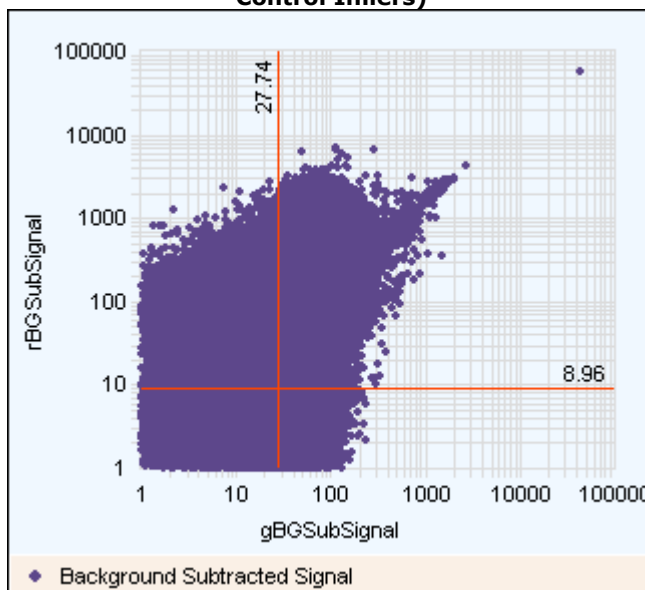
- BG NonUniform ● BG Population
- Red FeaturePopulation ● Red Feature NonUniform
- Green FeaturePopulation ● Green Feature NonUniform

Net Signal Statistics**Non-Control probes:**

| | Red | Green |
|----------------------|-----|-------|
| # Saturated Features | 0 | 0 |
| 99% of Sig. Distrib. | 871 | 291 |
| 50% of Sig. Distrib. | 66 | 147 |
| 1% of Sig. Distrib. | 48 | 94 |

Negative Control Stats

| | Red | Green |
|---------------------------------|-------|--------|
| Average Net Signals | 57.00 | 119.13 |
| StdDev Net Signals | 4.46 | 13.37 |
| Average BG Sub Signal | 0.11 | 0.33 |
| StdDev BG Sub Signal (BG Noise) | 3.61 | 8.98 |

Red and Green Background Corrected Signals (Non-Control Inliers)

Features (NonCtrl) with BGSubSignals < 0: 43665 (Red); 18605 (Green)

Local Bkg (inliers)

Red

Green

| | | |
|--------|--------|--------|
| Number | 239439 | 237516 |
| Avg | 63.55 | 51.29 |
| SD | 2.89 | 2.65 |

Foreground Surface Fit

Red

Green

| | | |
|-----------|-------|--------|
| RMS_Fit | 2.73 | 9.77 |
| RMS_Resid | 3.11 | 7.36 |
| Avg_Fit | 91.41 | 153.40 |

Reproducibility: %CV for Replicated Probes

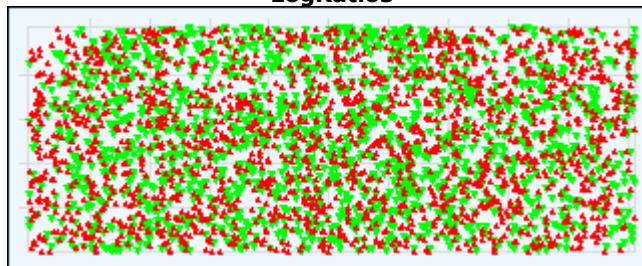
Median %CV Signal (inliers)

Non-Control probes

Red

Green

| | | |
|-----------------|-------|-------|
| BGSubSignal | -1.00 | -1.00 |
| ProcessedSignal | -1.00 | -1.00 |

Spatial Distribution of the Positive and Negative LogRatios

#Positive:52245 (Red) ; #Negative:50818 (Green)

▲Positive ▼Negative

LogRatio Versus Log Processed Signal