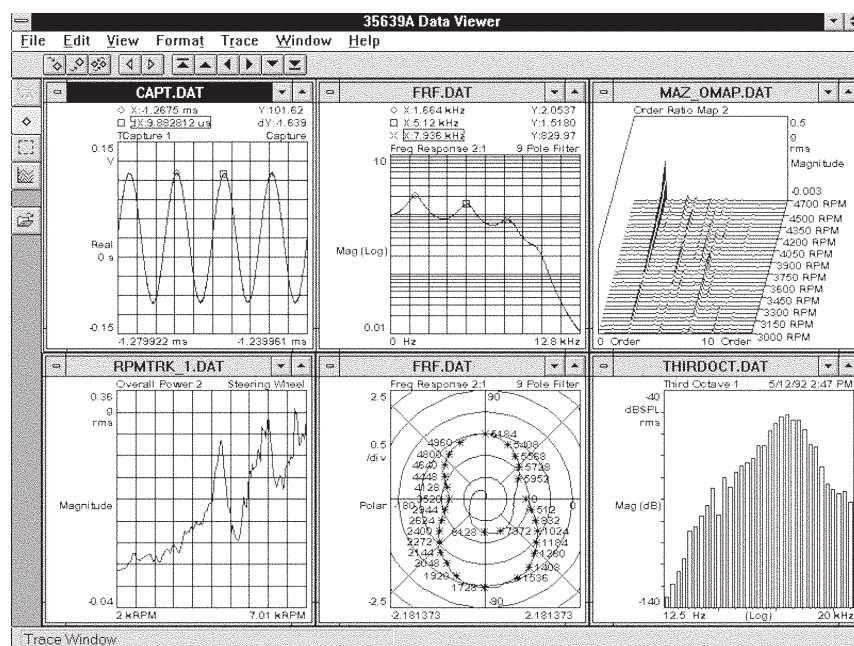


Agilent 35639A Data Viewer

Product Overview

**Increase the Value of Your
Measurement Results**



- View, format, and store measurement data on your PC
- Examine data with markers and versatile display formats
- Create effective reports and presentations in less time
- Give everyone in your organization easy access to all stored test results
- Use Standard Data Format (SDF) instrument files and other file formats

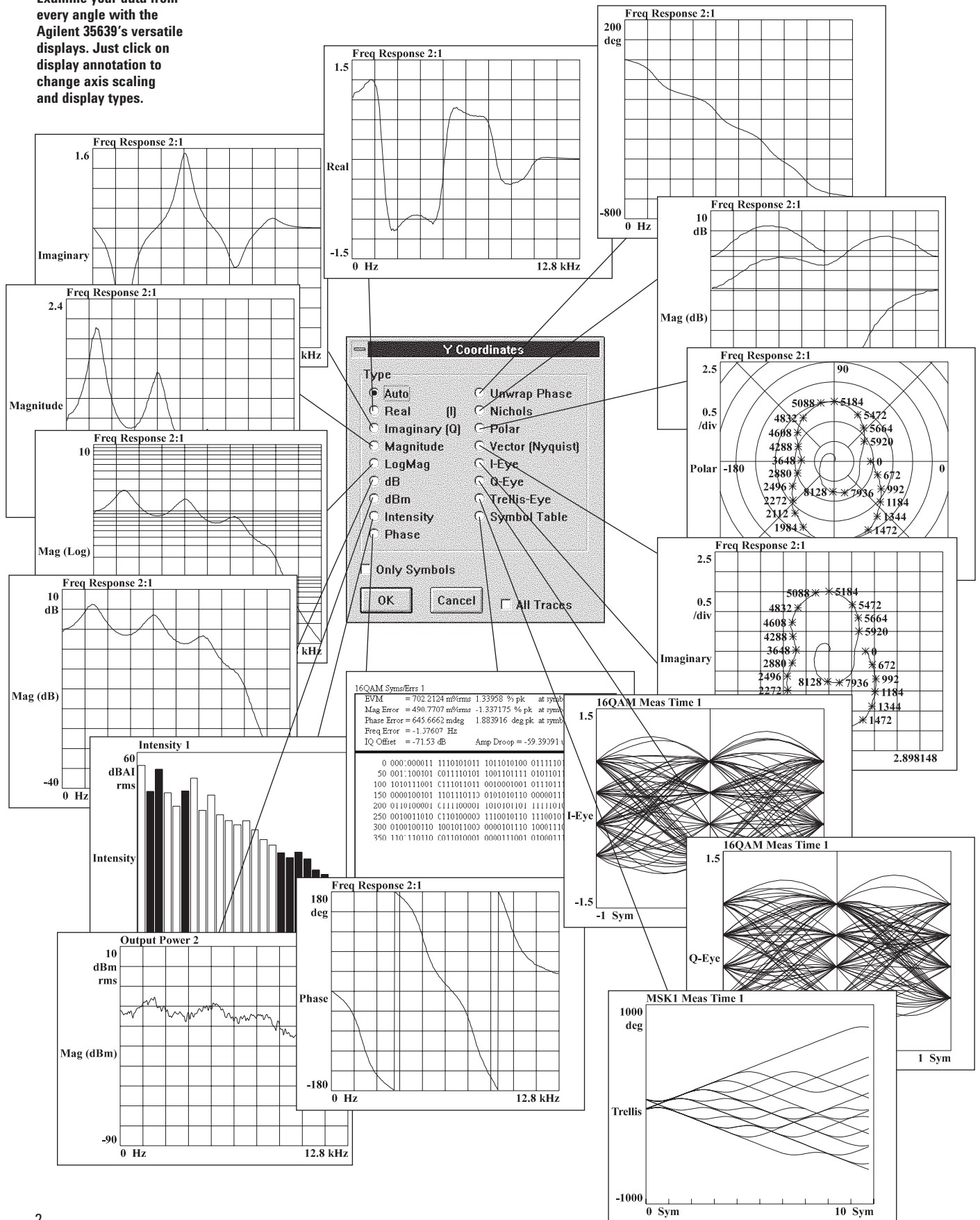
The Agilent 35639A Data Viewer helps you transform measurement data into manageable information. By moving data from your analyzers to the PC environment, the Data Viewer provides full access to Windows software for creating reports, examining, and storing results.

Plus, making test results available on a LAN means that anyone who needs to can access the results as easily as loading a file from the server. You'll get more value from the same data.



Agilent Technologies
Innovating the HP Way

Examine your data from every angle with the Agilent 35639's versatile displays. Just click on display annotation to change axis scaling and display types.



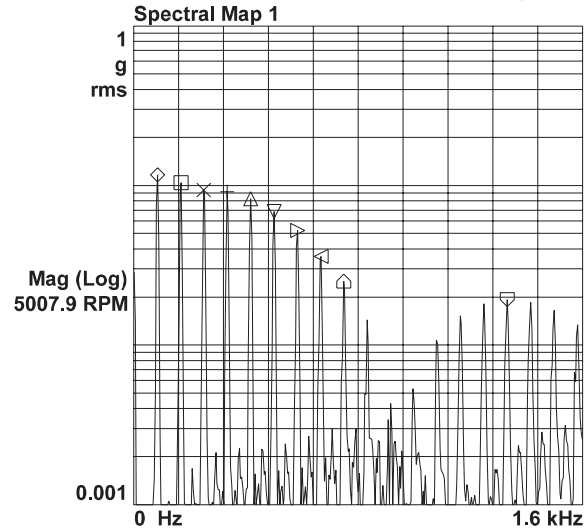
Examine results faster and more effectively

The 35639A Data Viewer opens a new realm of reporting and presentation options. Moving data from instruments to a PC lets you take full advantage of Microsoft® Windows display features. Quickly browse through data files. Overlay and compare traces from different measurement sessions and even different instruments. Sort, annotate, and catalog test results. Do the things you need to do with your data, in less time and with fewer headaches.

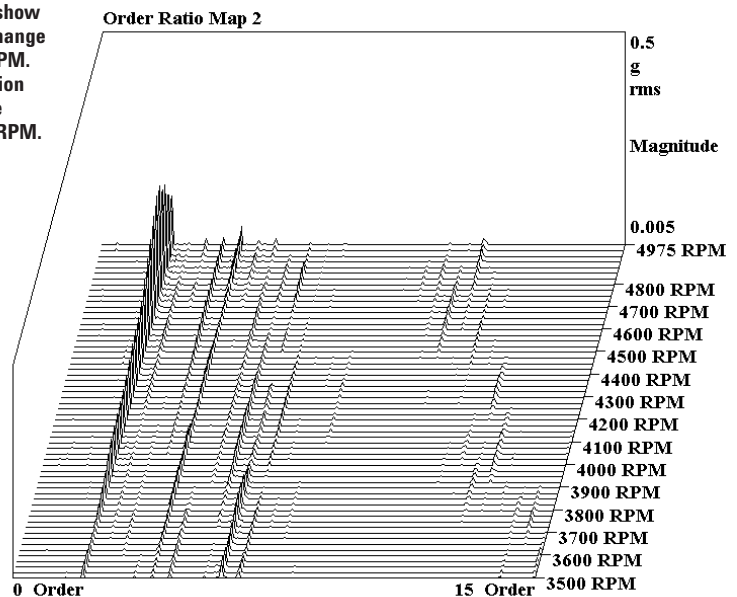
A versatile set of display types lets you examine data in detail. From basic magnitude and phase displays to Nyquist, polar, or waterfall displays, you can display data in just about any way imaginable. Plus, you can use absolute and relative markers to pick off exact values.

Automatic peak picking makes data analysis fast. Search for up to ten peaks and display them in order.

◇ X:84 Hz	Y:116.6849 mg
□ X:168 Hz	Y:104.4088 mg
× X:248 Hz	Y:93.75384 mg
+ X:332 Hz	Y:91.89131 mg
△ X:416 Hz	Y:83.0453 mg
▽ X:500 Hz	Y:69.06442 mg
▷ X:584 Hz	Y:52.44868 mg
◁ X:668 Hz	Y:35.94965 mg
△ X:748 Hz	Y:25.22809 mg
▽ X:1.332 kHz	Y:19.31175 mg

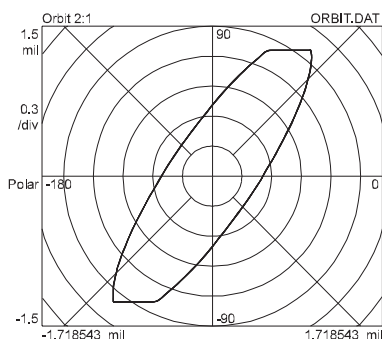
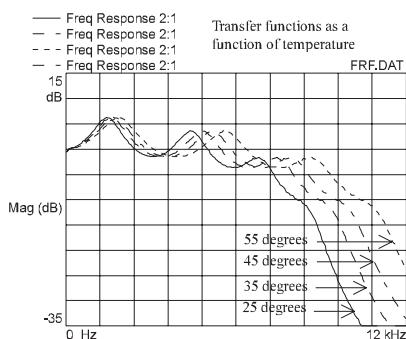
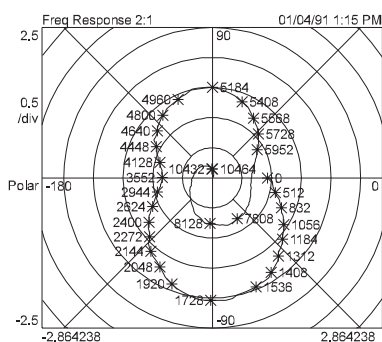
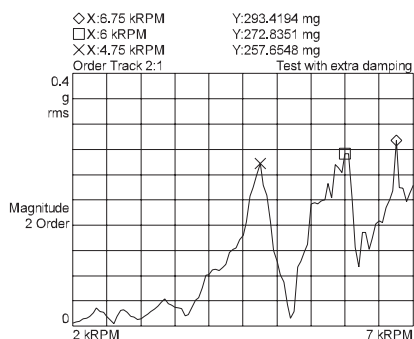
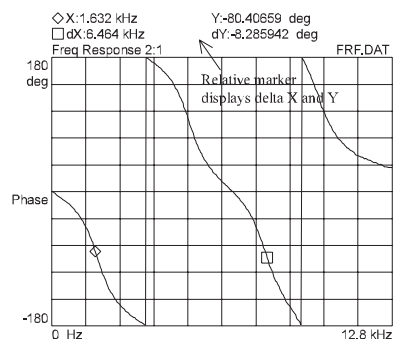
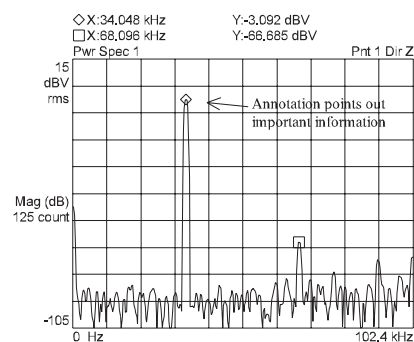


Map displays show how signals change with time or RPM. Z-axis annotation helps correlate changes with RPM.



Use the page mode to create custom, multi-display pages with user-annotation. Page layouts can be saved as templates for automated batch-printing or plotting of old or new measurement data.

Example Page Layout



Simplify reporting and presentation

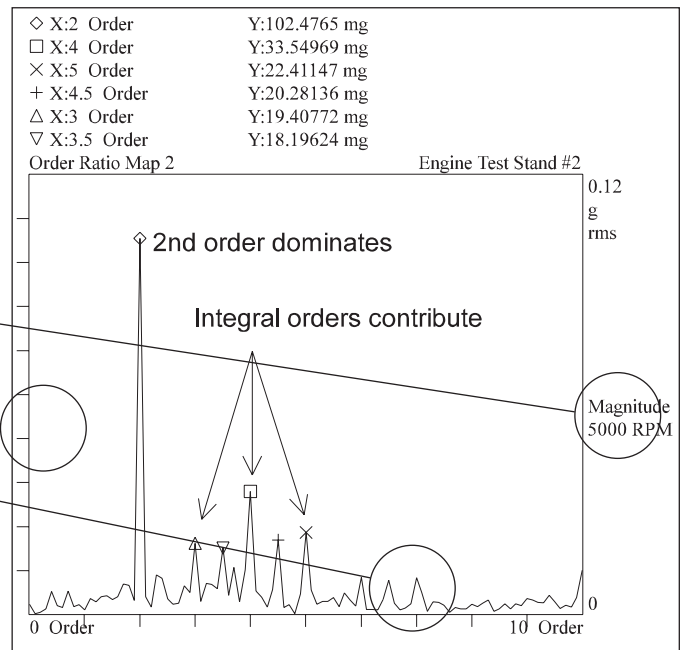
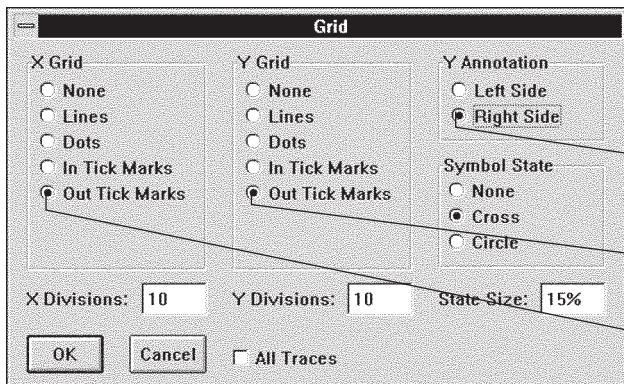
For most test engineers and technicians, making measurements is only part of the job. You also have to report, present, document, and archive your results. And when you're dealing with multiple instruments and multiple audiences, the job is that much more complicated.

The 35639A Data Viewer lets you use any SDF measurement results in any Windows program that accepts data or graphics. Format pages and reports just the way you want – adapt the data to fit your reporting needs, rather than the other way around. Change line widths, colors, fonts, and grid styles. Put as many traces on a page as you need and add text, titles, dates and other information to make your reports more useful.

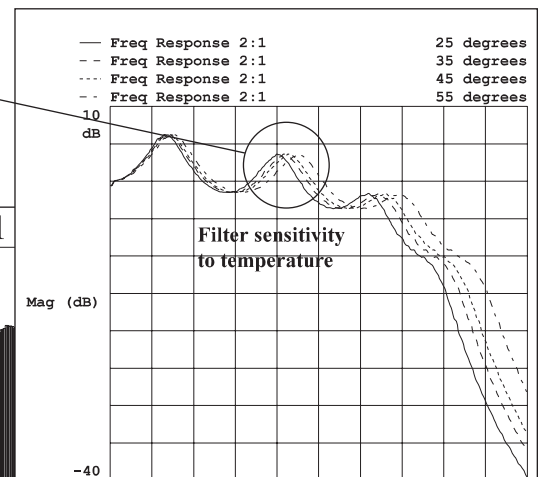
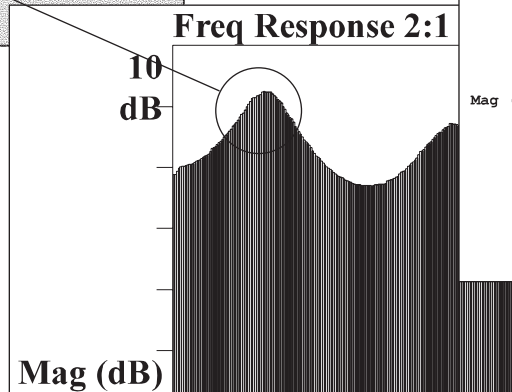
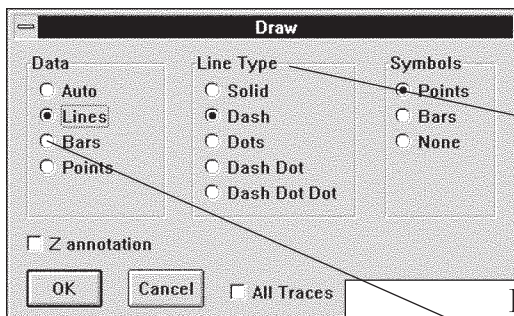
You'll get a productivity boost from the Data Viewer's page templates. Once you've established standard report formats, use the templates to regenerate identical reports whenever you acquire new data.

The 35639A also increases productivity by freeing up more time on your analyzers, since you won't need to tie them up just to view stored data.

Adjust fonts, line widths, and grid styles to present your data in the most effective way, then save the display as a template for future use. Add annotation and arrows to highlight important information.



Different line types or colors make comparing data easy.



Improve communication by sharing data

Sharing measurement results with colleagues or clients is an important part of most tests. The 35639A makes sharing measurements as easy as sharing any PC file. You can imagine how useful this is in LAN environments in particular, where you and your associates can quickly pull up any measurements stored on the system.

In addition, file conversions to ASCII and MATLAB, make it easy to transfer data to other application programs.

Immortalize your data

The 35639A keeps your data alive even if the original instrument is no longer available. As long as the data files were saved in SDF, you still have access to every measurement you made. When you replace or upgrade your instrument collection, you don't have to worry about losing your valuable data from older instruments. In

addition, the ability to compare data from a mix of different instruments easily and quickly will boost your analysis productivity.

Simplify your archiving tasks

How many different kinds of files, plots, and printouts do you have stuffed in filing cabinets? Think of the time you'd save if you archived measurements in standard report or plot formats using PC file storage conventions. The 35639A Data Viewer will streamline your archives by making it easy to design and use standard formats for record-keeping. With these page templates, you establish a layout that meets your archiving needs, then simply pull new data into the page every time you make a measurement. You'll be assured that the data you saved last year will be easy to compare with data you save next year.

Product Features

Products and data formats supported by the Agilent 35639A

3560A (via SDF Utilities)
3562A
3563A
3566A
3567A
35665A
35670A
3569A (via SDF Utilities)
3587S
3588A (via SDF Utilities)
3589A (via SDF Utilities)
89410A
89440A
89441A
VEE (Time waveform and spectrum record data sets)
ASCII (.TXT and .CSV)
MATLAB (export only)

Y Coordinates

Real
Imaginary
Magnitude
Log magnitude
dB
dBm
Intensity
Phase
Unwrapped phase
Nyquist
Nichols
Polar

Data communications

I-Eye
Q-Eye
Trellis-Eye
Symbol table
Error vector magnitude
Phase error
Vector diagram
Constellation diagram

X Coordinates

Log
Linear

Scaling

Autoscale
Fixed scale

Y Units

Peak
Peak to peak
RMS
EU
EU2
EU/ Hz
EU2/Hz
EU2Sec/Hz

X Units

Hz
RPM
Time
Instrument dependent

Marker types (10 maximum)

Absolute
Relative
Peak search

Display types

Single trace
Overlaid traces
Waterfall

Adjustable display attributes

Trace font
User font
Colors
Trace line
Marker line
Grid line
User line

Windows clipboard support

Copy data
Copy graphics
(Windows Metafile - vector)
Copy bitmap
(Windows/OS2 Bitmap - raster)

System requirements

Windows 3.1
MS DOS® 5.0 or higher
386 or higher
4 Mbytes RAM
4 Mbyte hard disk space
VGA display
Mouse

MS-DOS is a U.S. registered trademark of Microsoft Corporation.

Agilent Technologies' Test and Measurement Support, Services, and Assistance

Agilent Technologies aims to maximize the value you receive, while minimizing your risk and problems. We strive to ensure that you get the test and measurement capabilities you paid for and obtain the support you need. Our extensive support resources and services can help you choose the right Agilent products for your applications and apply them successfully. Every instrument and system we sell has a global warranty. Support is available for at least five years beyond the production life of the product. Two concepts underlie Agilent's overall support policy: "Our Promise" and "Your Advantage."

Our Promise

Our Promise means your Agilent test and measurement equipment will meet its advertised performance and functionality. When you are choosing new equipment, we will help you with product information, including realistic performance specifications and practical recommendations from experienced test engineers. When you use Agilent equipment, we can verify that it works properly, help with product operation, and provide basic measurement assistance for the use of specified capabilities, at no extra cost upon request. Many self-help tools are available.

Your Advantage

Your Advantage means that Agilent offers a wide range of additional expert test and measurement services, which you can purchase according to your unique technical and business needs. Solve problems efficiently and gain a competitive edge by contracting with us for calibration, extra-cost upgrades, out-of-warranty repairs, and on-site education and training, as well as design, system integration, project management, and other professional engineering services. Experienced Agilent engineers and technicians worldwide can help you maximize your productivity, optimize the return on investment of your Agilent instruments and systems, and obtain dependable measurement accuracy for the life of those products.

For More Assistance with Your Test & Measurement Needs go to

www.agilent.com/find/assist

Or contact the test and measurement experts at Agilent Technologies
(During normal business hours)

United States:
(tel) 1 800 452 4844

Latin America:
(tel) (305) 267 4245
(fax) (305) 267 4286

Canada:
(tel) 1 877 894 4414
(fax) (905) 206 4120

Australia:
(tel) 1 800 629 485
(fax) (61 3) 9272 0749

Europe:
(tel) (31 20) 547 2323
(fax) (31 20) 547 2390

New Zealand:
(tel) 0 800 738 378
(fax) 64 4 495 8950

Japan:
(tel) (81) 426 56 7832
(fax) (81) 426 56 7840

Asia Pacific:
(tel) (852) 3197 7777
(fax) (852) 2506 9284

Product specifications and descriptions in this document subject to change without notice.
Copyright © 1994, 2000 Agilent Technologies
Printed in U.S.A. 8/00
5962-9499E



Agilent Technologies

Innovating the HP Way