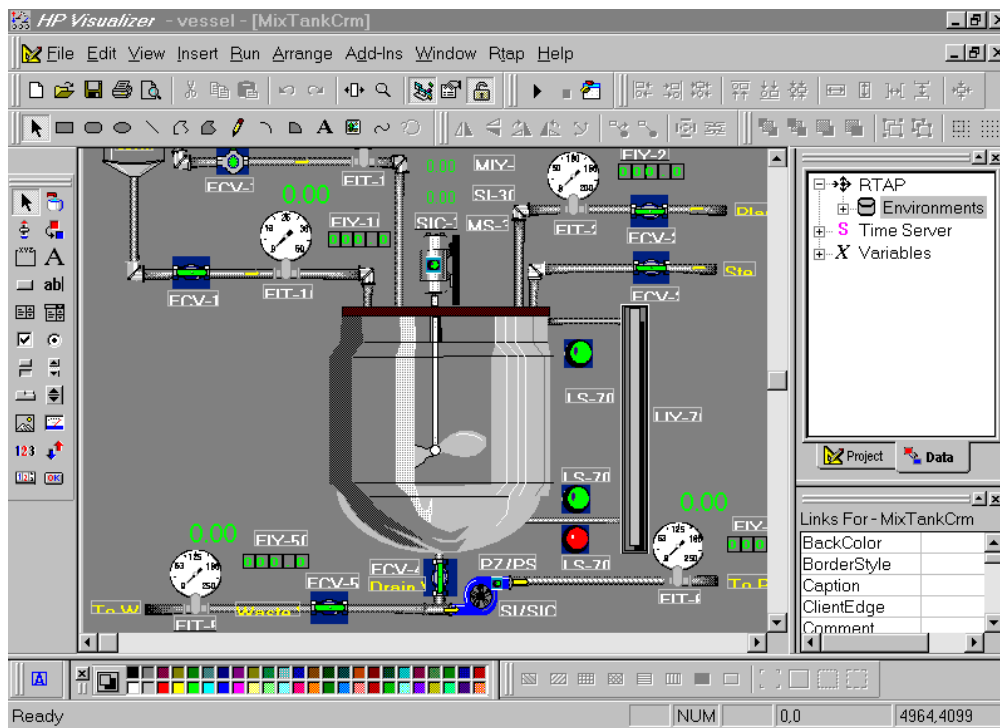


HP

E9026/27/28AA

Visualizer for Windows NT®

A real-time graphical display for monitoring and control

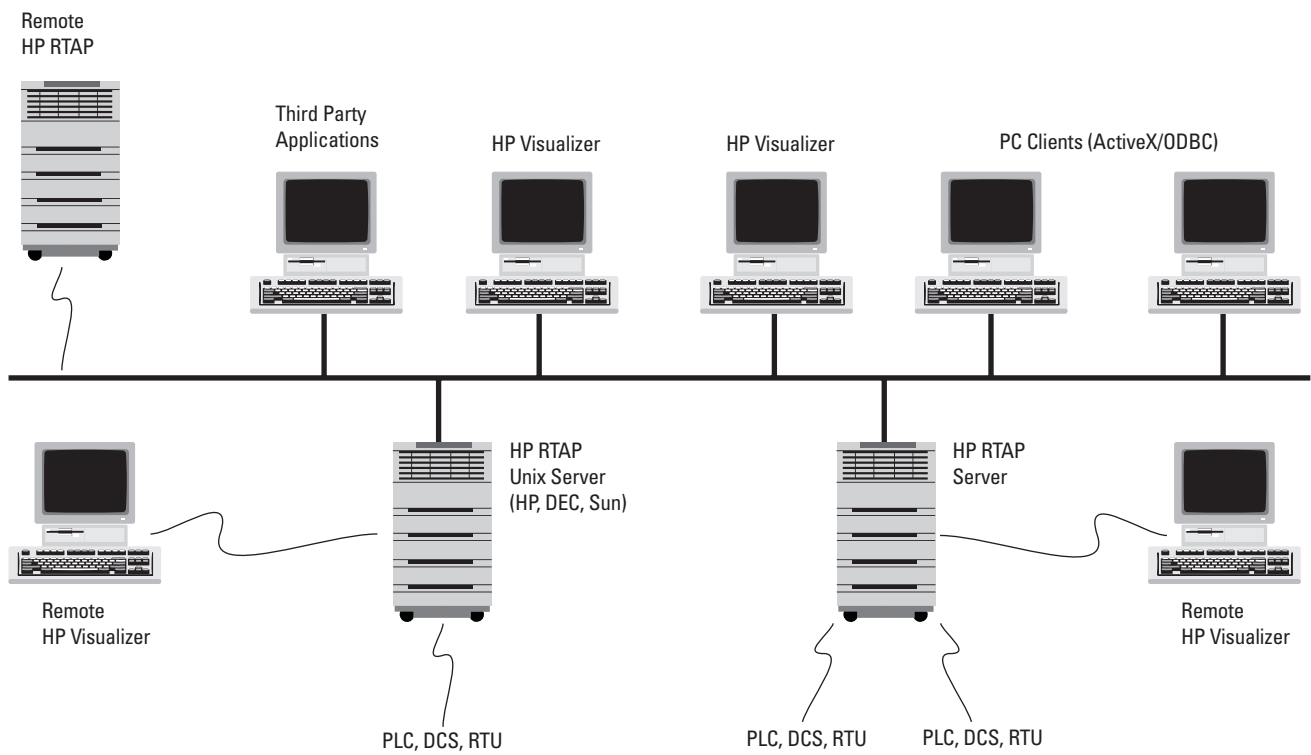


An HP Visualizer
project in Design
Time mode

The HP Visualizer gives you:

- a Windows NT-based HMI for HP RTAP data servers
- a seamless connection to your real-time information
- drag and drop linking of database attributes to process graphics
- a common HMI for monitoring and controlling different types of process control systems
- a simple way to localize your HMI
- component object technology that reduces development time

**A distributed
HP RTAP system
using HP Visualizer
clients**



Real-time production information is becoming the strategic feedstock of business optimization. Information integration sets the stage for optimization by linking the real-time world to business applications. HP's automation integration software is the foundation of adaptable solutions that deliver on the promise of integration by connecting decision makers at all levels of an enterprise to essential real-time operating information.

Visualize Your Operations

The HP Visualizer is a human-machine interface (HMI) design and runtime package that gives you the power to create detailed process graphics representing your HP RTAP system and animate those graphics by linking them to your real-time data. With an intuitive display for supervisory control and data acquisition, operators can focus on the task, not on the tool.

Based on Microsoft's® component object technology, the HP Visualizer is an ActiveX container that brings life to the wide selection of automation-specific ActiveX controls included with the HP Visualizer as well as to any ActiveX control you want to use. Use these controls, along with HP Visualizer's extensive

library of process symbols, to produce an intuitive operator interface quickly and easily. For more complex applications, HP Visualizer includes a full Visual Basic for Applications (VBA) scripting environment. VBA allows you to customize both your HMI displays and your HP Visualizer design environment.

Accelerate Your HMI Development

Component object technology, which splits software into small modules that perform specific tasks in a standard way, addresses the need for faster creation of bigger, more powerful applications. By assembling and reusing different kinds of components, you can build a large application with only a fraction of the development effort that would otherwise be necessary.

Build Intuitive Graphics Quickly

The HP Visualizer's drawing tools give you a WYSIWYG graphics building environment in which to design and produce your interface. Animation capabilities such as mechanical emulation allow you to capture the intricate workings of your process system. And you can import AutoCAD™ .dxf files, Windows

metafiles and bitmaps into your HP Visualizer project, eliminating the need to recreate graphics that already exist.

Access Your HP RTAP Environments

You can access your HP RTAP environments and even launch the HP RTAP Configurator right from the HP Visualizer. The Data tab displays your database points and attributes, allowing you to link real-time data to process graphics effortlessly by dragging and dropping.

Connect to UNIX® and NT Servers

The HP Visualizer is a Windows NT-based client that can connect to one or more HP RTAP servers running on UNIX or NT. This versatility lets you choose the platforms and the degree of distribution that your supervisory control applications require.

Visualize the Simplicity

Customizable, powerful, flexible, and above all usable, the HP Visualizer works in concert with HP RTAP to turn the most complex supervisory control problem into the picture of simplicity.

Microsoft and Windows NT are U.S. registered trademarks of Microsoft Corporation.

AutoCAD is a U.S. trademark of Autodesk Inc.

UNIX is a registered trademark of the Open Group.

HP Visualizer for Windows NT®

Ordering Information

E9026AA HP Visualizer
Developer License

E9027AA HP Visualizer
Runtime License

E9028AA HP Visualizer media
on CD-ROM

For more information about Hewlett-Packard test & measurement products, applications, services, and for a current sales office listing, visit our web site, <http://www.hp.com/go/tmdir>. You can also contact one of the following centers and ask for a test and measurement sales representative.

United States:

Hewlett-Packard Company
Test and Measurement Call Center
P.O. Box 4026
Englewood, CO 80155-4026
1 800 452 4844

Canada:

Hewlett-Packard Canada Ltd.
5150 Spectrum Way
Mississauga, Ontario L4W 5G1
(905) 206 4725

Europe:

Hewlett-Packard
European Marketing Centre
P.O. Box 999
1180 AZ Amstelveen
The Netherlands
(31 20) 547 9900

Japan:

Hewlett-Packard Japan Ltd.
Measurement Assistance Center
9-1, Takakura-Cho, Hachioji-Shi,
Tokyo 192, Japan
Tel: (81) 426 56 7832
Fax: (81) 426 56 7840

Latin America:

Hewlett-Packard
Latin American Region Headquarters
5200 Blue Lagoon Drive
9th Floor
Miami, Florida 33126
U.S.A.
Tel: (305) 267-4245
(305) 267-4220
Fax: (305) 267-4288

Australia/New Zealand:

Hewlett-Packard Australia Ltd.
31-41 Joseph Street
Blackburn, Victoria 3130
Australia
Tel: 1 800 629 485 (Australia)
0800 738 378 (New Zealand)
Fax: (61 3) 9210 5489

Asia Pacific:

Hewlett-Packard Asia Pacific Ltd.
17-21/F Shell Tower, Times Square,
1 Matheson Street, Causeway Bay,
Hong Kong
Tel: (852) 2599 7777
Fax: (852) 2506 9285

Data subject to change.

Copyright © 1999 Hewlett-Packard Co.
Printed in U.S.A. 1/99
5967-6300E