



# Agilent G2727AA LC/MS Data Browser Quick Start

## A guide to get started with Data Browser

Use this quick reference guide as a road map for your first steps with the Data Browser software, and as a guide through your user information.

### What is Data Browser?

Agilent Data Browser lets chemists efficiently review their LC/MS data and generate reports. The key benefits of Data Browser are ease of use, fast review, and flexibility in reporting.

### Main features of Data Browser

- Quick navigation through data files.
- Review and compare sample run information and results.
- Generate and print configurable reports.
- Export reports and fraction tables to spreadsheets.
- Export summary reports from AEV to CSV file.
- Export Plate View to Excel or CSV file.

### What's new in A.03.02

- Support AEV files generated from Agilent TOF data
- Print reports automatically from ChemStation software
- Load/Save fraction result selections from/to AEV file
- Customize summary report to include mass error, formula and complete fraction results



- Browse through multiple plates/trays from CTC autosampler
- Report both data acquisition method and data analysis method in sample header
- More flexible report printing
- Improved overall user interaction and enhanced ease-of-use
- Display mass error and formula in Plate View pane
- Include TOF AEV tables including Formula Confirmation Table, Formula Generation Table and Compound Confirmation Screening Table

## Data Browser Help - Documents and online help

### Getting Started with Agilent LC/MS Data Browser

Agilent LC/MS Data Browser lets you browse your analytical data (from applications including Agilent ChemStation Software and Agilent TOF Software) without the need to purchase and launch full analytical software.

To start viewing data, see the online help **Getting Started** instructions to:

- Convert ChemStation data for Data Browser.
- Convert TOF data for Data Browser.
- Browse through and open data files.
- Browse through samples in a well plate.
- View sample data.
- View chromatograms and mass and UV spectra.

### Quick Start (G2727-90011)

- Introduction
- Where to find help
- **Data Browser Panes**
- Installation (and uninstallation) instructions
- Roadmaps of basic tasks

**Online Help** Use the online help for in-depth information not given in the Quick Start. To display online help, click the **Help** icon in the toolbar, or click **Help > Contents**.

The online help is divided into two sections.

- **How-to** contains step-by-step instructions.
- **Reference** contains information about menus, toolbars, panes and dialog boxes.

Find topics of interest through the Contents, Index, or Search tabs.

**Getting Started** is found in the welcome page of the online help.

## List of Data Browser panes

Data Browser panes can be customized as to whether and how they are displayed, and what information will be displayed. These panes are interactive. When you select data in one pane, related information in other panes are displayed.

Panes	Function
<b>File Tree</b>	<ul style="list-style-type: none"><li>• Load and browse sample files</li><li>• Map default drive and folder</li></ul>
<b>Plate View</b>	<ul style="list-style-type: none"><li>• View and browse well plate, vial tray or a combination of samples</li><li>• Display text information for each well</li><li>• Select Estimated Sample Purity Method</li><li>• Print Plate View</li><li>• Export Plate View to Excel or CSV file</li></ul>
<b>Sample Header Table</b>	<ul style="list-style-type: none"><li>• View data file information</li><li>• View target ion status</li><li>• View target found/not found, and click target to view details</li></ul>
<b>Peak Table</b>	<ul style="list-style-type: none"><li>• View data for each peak in a sample in two formats</li><li>• View peak purity information</li><li>• Select peaks to view in Chromatogram and Spectrum windows</li><li>• View quantitative data: Area%, Amount, Width, Height, Times, etc.</li><li>• View detector and signal information</li></ul>
<b>Fraction Collection Table</b>	<ul style="list-style-type: none"><li>• View fraction collection results (if present)</li><li>• Select targets to view in Chromatogram window</li><li>• Highlight collected peaks in Chromatogram</li><li>• Select samples for export to spreadsheet</li></ul>
<b>Chromatogram Window</b>	<ul style="list-style-type: none"><li>• Open multiple Chromatogram windows</li><li>• View chromatographic signals for selected samples</li><li>• Select signals to view</li><li>• Overlay or Stack signals</li><li>• Select peaks to view in Spectrum Window</li><li>• Copy or Print Chromatogram</li></ul>
<b>Spectrum Window</b>	<ul style="list-style-type: none"><li>• View mass or UV spectra for selected chromatographic peaks</li><li>• Open multiple Spectrum windows</li><li>• View ion abundance values</li><li>• Copy or Print spectrum</li></ul>

## To Install and Reinstall Agilent LC/MS Data Browser

You may install and use Agilent LC/MS Data Browser software without having ChemStation or TOF software installed.

However, to convert ChemStation files for Data Browser, the ChemStation software must be installed before the Data Browser software. If ChemStation software is reinstalled or upgraded, reinstall Data Browser.

To convert TOF files for Data Browser, simply install the TOF software. You can create Data Browser files using TOF software without having to install Data Browser.

### System Requirements:

- **Intel Pentium III processor or better**
- **256 MB of memory**
- **12 MB free on the primary hard drive**
- **Enough hard disk space to hold your data files**

### To Install Agilent LC/MS Data Browser

- 1 Insert the Data Browser CD-ROM (G2727-60004) into the CD-ROM drive.
- 2 In Windows Explorer, double-click **Setup.exe** in the root directory of the CD-ROM.
- 3 Follow the instructions on the screen.

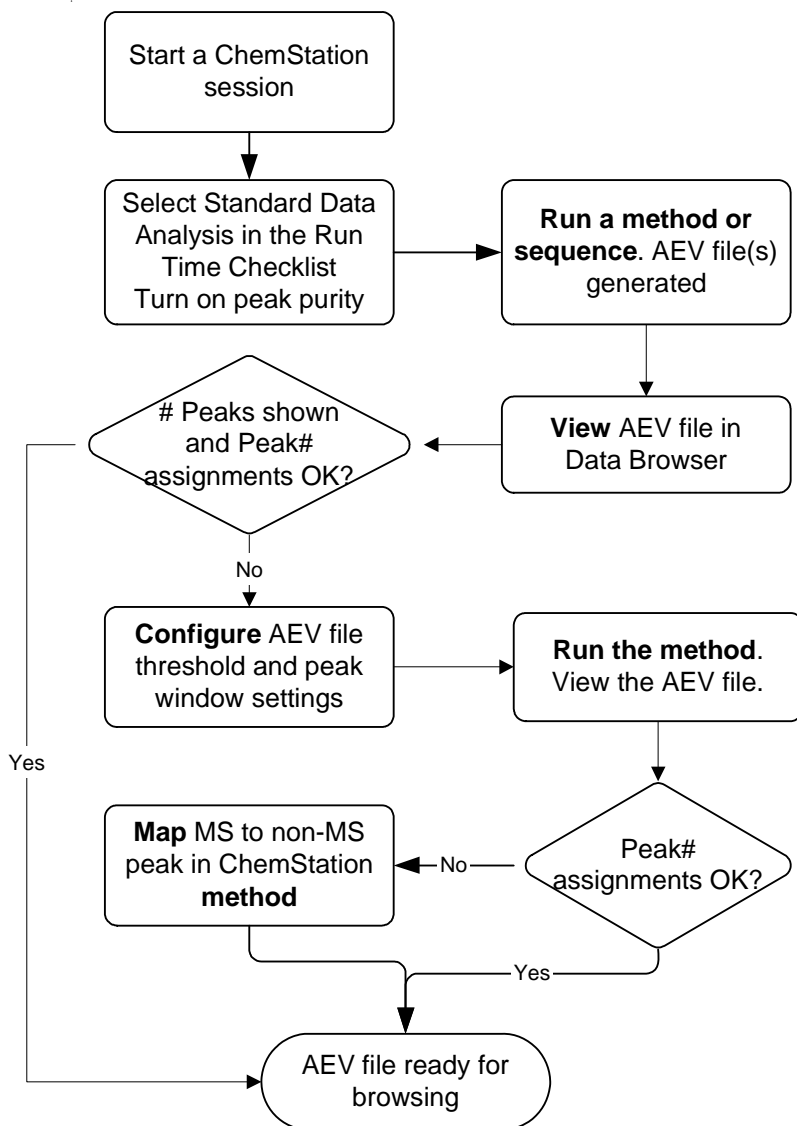
### To Reinstall Data Browser

- 1 Insert the Data Browser CD-ROM (G2727-60004) into the CD-ROM drive.
- 2 In Windows Explorer, double-click **Setup.exe** in the root directory of the CD-ROM.
- 3 When prompted **Do you want to remove Data Browser?**, click **Yes**.
- 4 After Data Browser has been removed, double-click **Setup.exe**.

Follow the instructions on the screen to install the software.

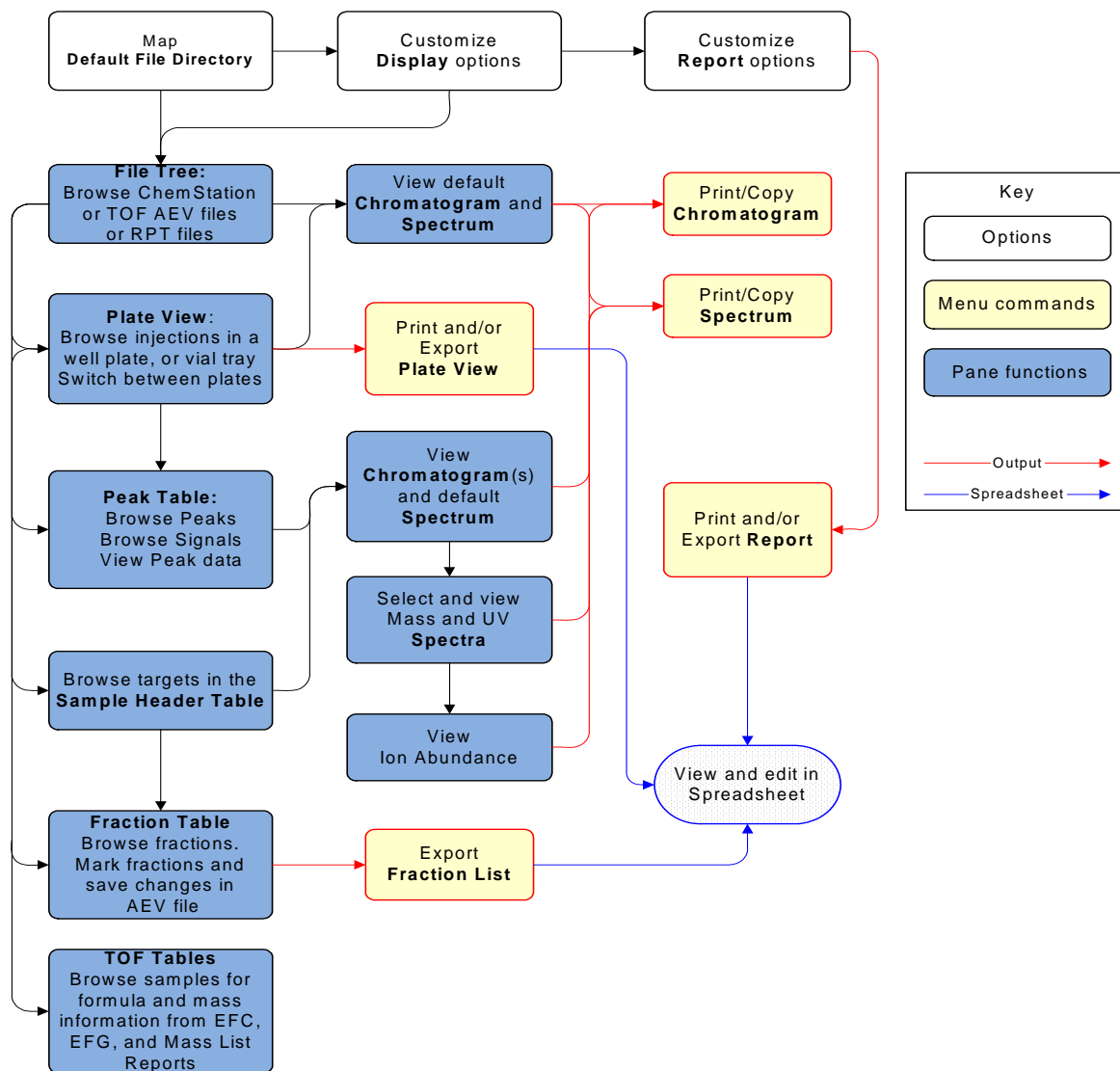
## Roadmap for ChemStation data file conversion

See Online Help for more information.



## Road map for viewing data in Data Browser

See Online Help for more information.



**www.agilent.com**

## **In this book**

This book contains:

- [What is Data Browser?](#)
- [What's new in A.03.02](#)
- [Data Browser Help - Documents and online help](#)
- [List of Data Browser panes](#)
- [To Install and Reinstall Agilent LC/MS Data Browser](#)
- [Roadmap for ChemStation data file conversion](#)
- [Road map for viewing data in Data Browser](#)

© Agilent Technologies 2004-2005

Printed in USA  
Third edition, September 2005



G2727-90011



**Agilent Technologies**