



Number: **SHT-900LC-02**

Date: Aug 12, 2008

Page 3

VARIAN ***SERVICE How To***

Model Number: 900 Series Specialist ftp site	Originator: Des Wichems	Topic Getting Access to the 900 Series Specialist Site
--	-----------------------------------	--

Logging into the Specialist ftp site:

If you are not a 900-Series Specialist, then you should not be reading this.

1. Log into the Varian ftp site (<ftp://ftp.varianinc.com/>). You should see the screen shown below in Fig 1

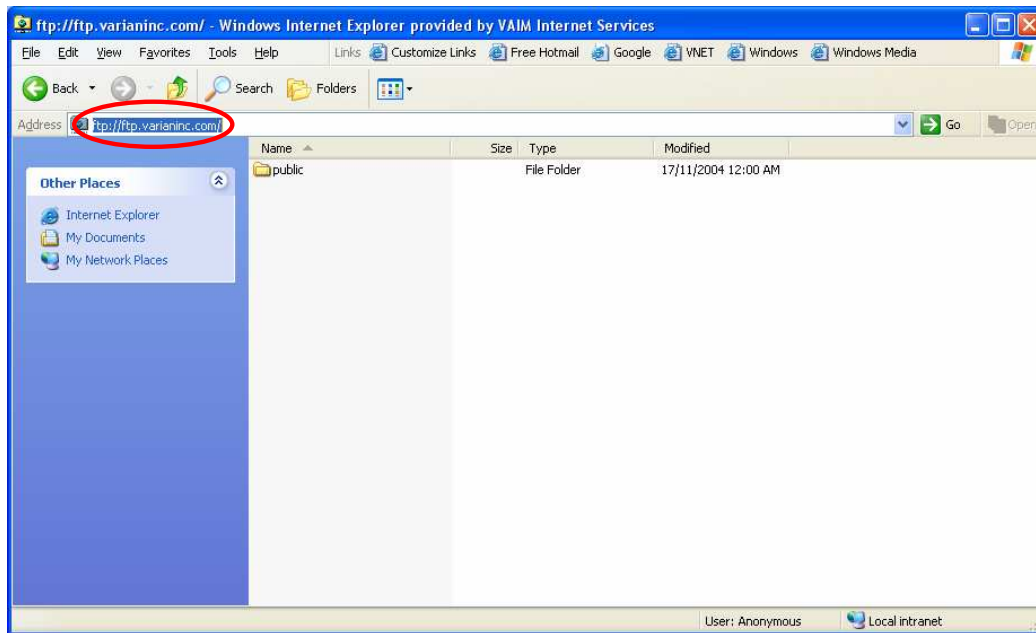


Figure 1: Varian ftp site

2. Go to the *File* pull down menu and select the *Login As* option (Fig 2)

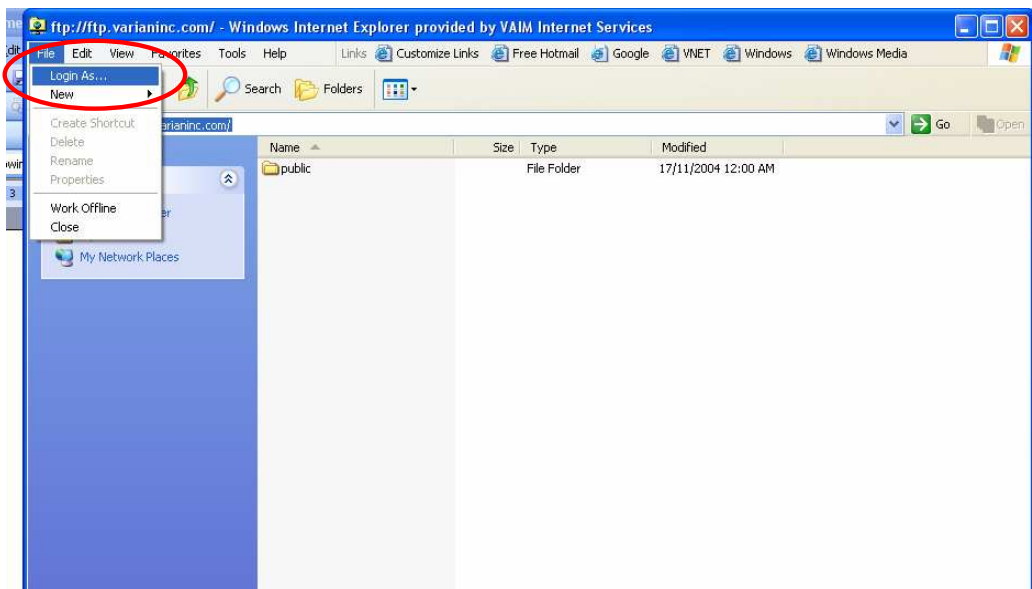


Figure 2: Logging into the ftp site as a specialist

3. Login as **hplc900**, and put in **4Specialists** as the password (Fig 3), and press the Log On.

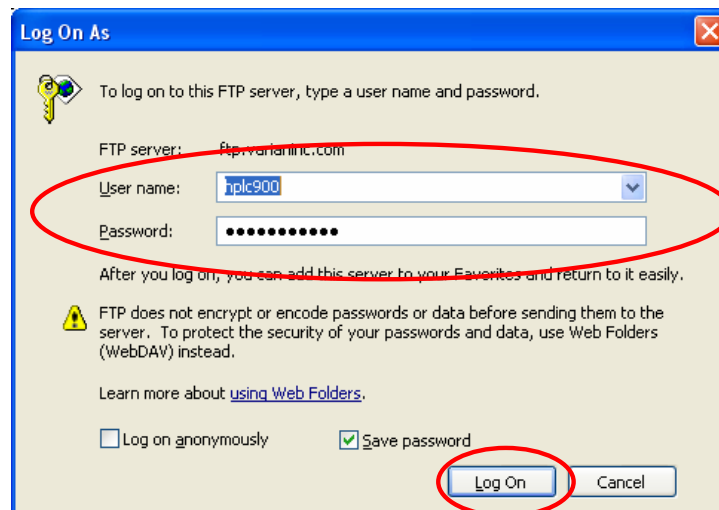


Figure 3: Login Screen

4. Once you *log on* you will see a new screen (Fig 4) with two main folders.

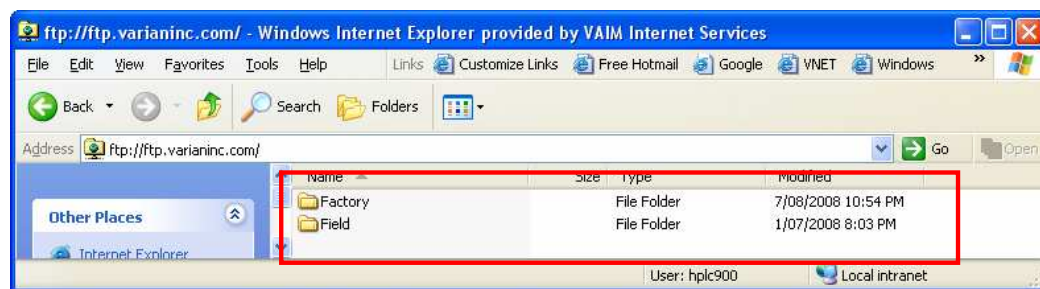


Figure 4: Specialist Site Folders

5. The *Field* folder is for the Specialists to use to pass information back and forth between themselves. The *Factory* folder has all the latest information from the factory and should be used for training course materials as well as to get the latest software, drivers, and any *How To* documents (Fig 5).

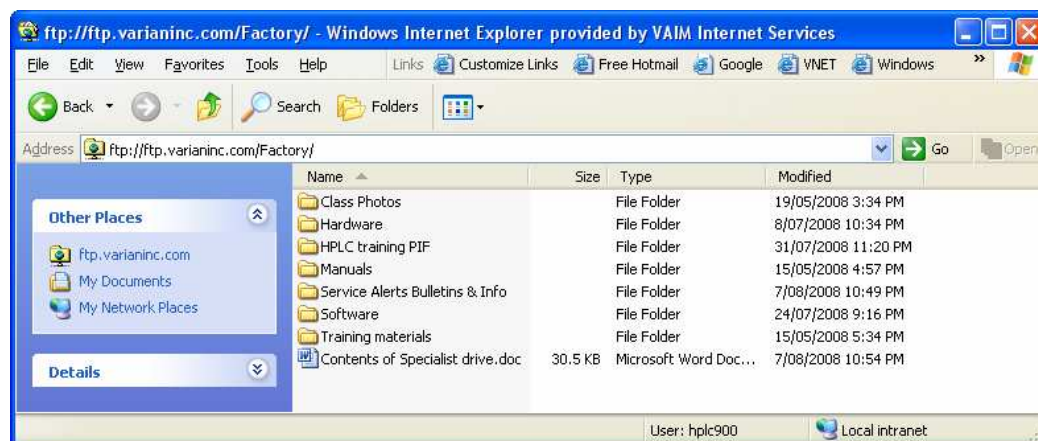


Figure 5: Materials in the Factory Folder

There is also a word document called "*Contents of Specialist drive.doc*". This document lists the current content of the folders.