



**VARIAN**

**Number: SHT-900LC-11**

**Date: March 02, 2009**

**Pages: 7**

## ***SERVICE How To***

Model Number: <b>900 Series LC</b>	Originator: <b>Des Wichems</b>	Topic <b>Checking a Customer's method on a Virtual System</b>
---------------------------------------	-----------------------------------	--

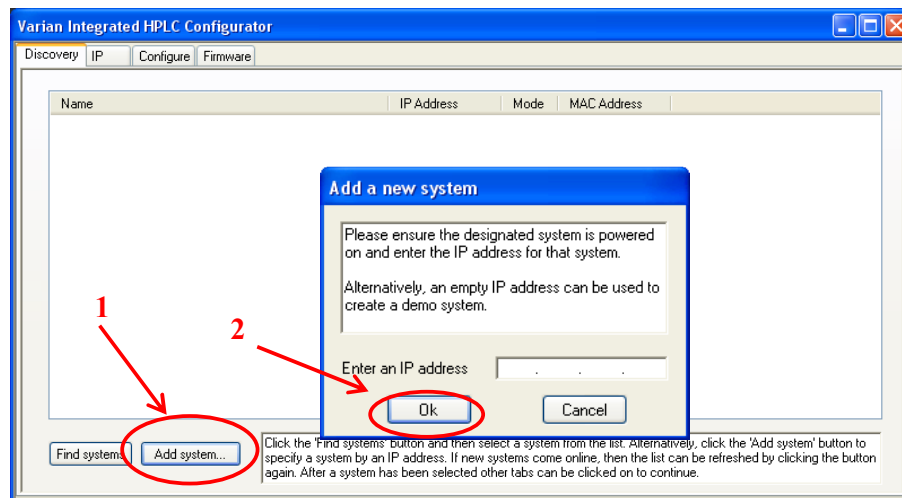
### **Configuring a Virtual system to check a customers method**

The minimum items you need to view a customers method are:

1. The configuration of the customers system (Ask for a cfg file)
2. The name of the customers system
3. The method the customer is using

If you are missing any of the three items above, you will not be able to see the method properly.

1. Open the 900 service configuration manager and click that *Add system button* (1).



**Figure 1: 900 Service Configurator Discovery page**

2. A new window will open (*Add a new system*). Do not fill in an IP address since you do not have a system to connect to. All you need to do is click *Ok* (2). You will then see the screen capture in *Figure 2*.

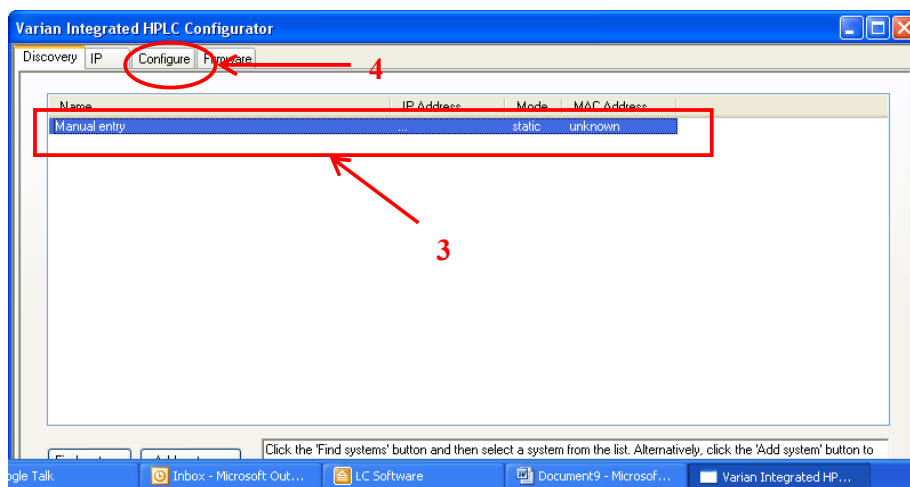


Figure 2: Selecting the Manual entry system

3. Select the *Manual entry* (3) line and click on the *configure* tab (4).
4. Select the *Create a new system* (5) option and click *Next* (6) (Figure 3).

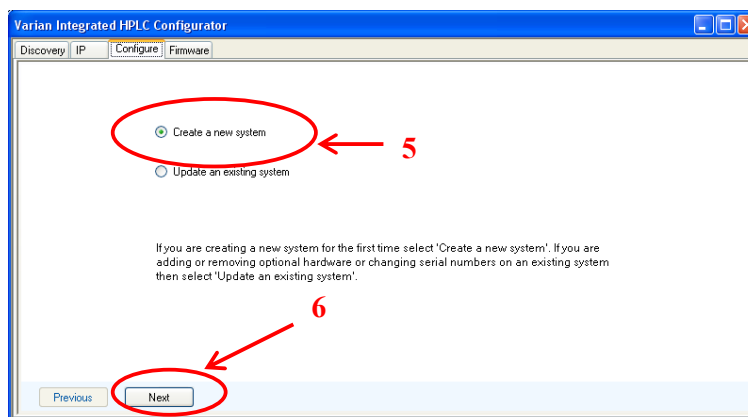


Figure 3: Creating a new system

5. Select the system (7) that the method you are trying to open belongs to. It is very important that you exactly match the system and the options of the system used in the method, since **failure to do this will not allow** you to open the method.

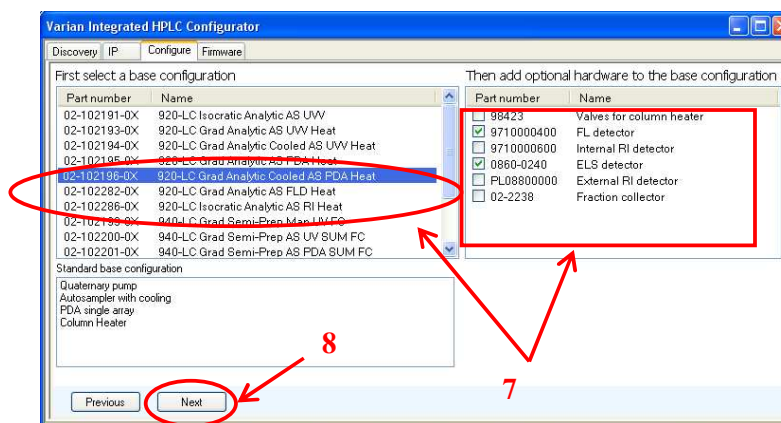


Figure 4: Configuring the newly created system

- Once the system has been configured, select **Next** (8) Figure 4. You will now need to insert serial numbers (9) for each module and click next (10), after all numbers have been entered. (On a virtual system, this may be any number)

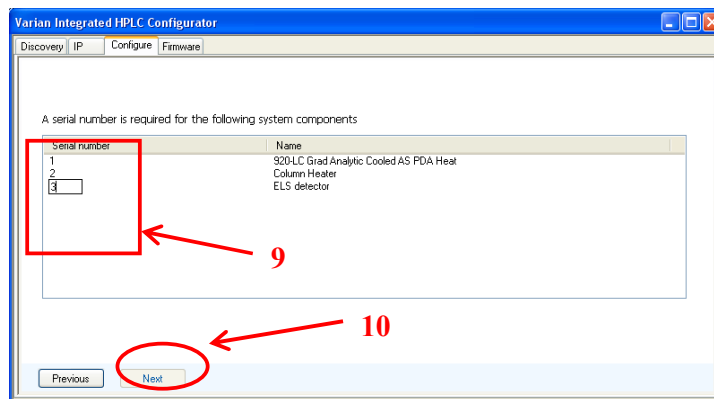


Figure 5: Inserting the serial numbers for the options

- Select the **update** button (11). Once the system has updated you will see a little window that says *All tasks complete*. Click the **OK** button(12), and close the window.

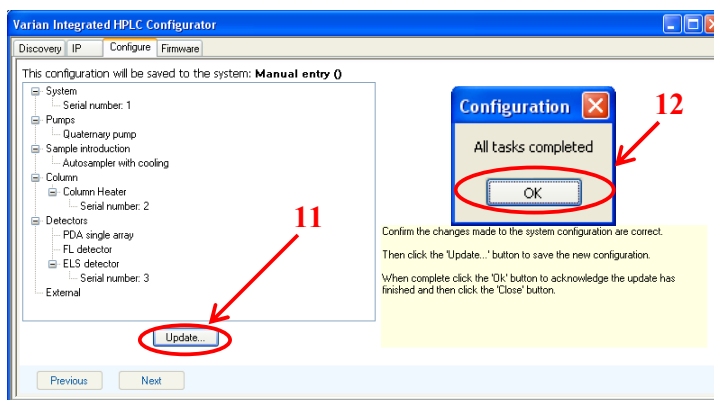


Figure 6: Update the configuration on the system

- Open up Galaxie configuration manager and select the systems icon (13). Right mouse click in the systems window and select **New** (14).

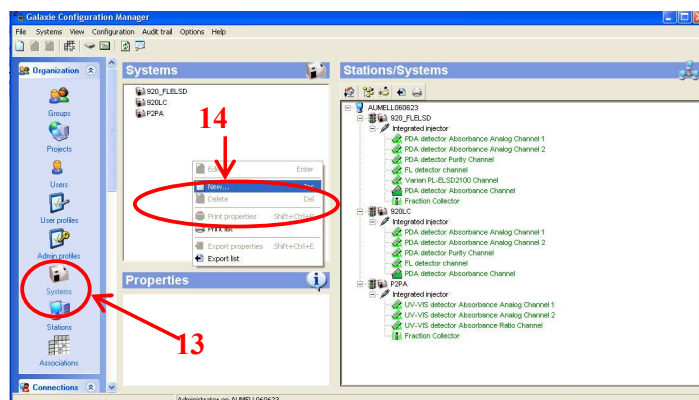


Figure 7: New system page

9. Create a new system ensuring that the **system name (15)** is exactly the same as the one used on the system where the method is coming from. Then select the appropriate *Action server* and *Sequence server* (One a virtual system this will be the PC on which you are trying to review the customers method)) (16), and click the *next* button (17).

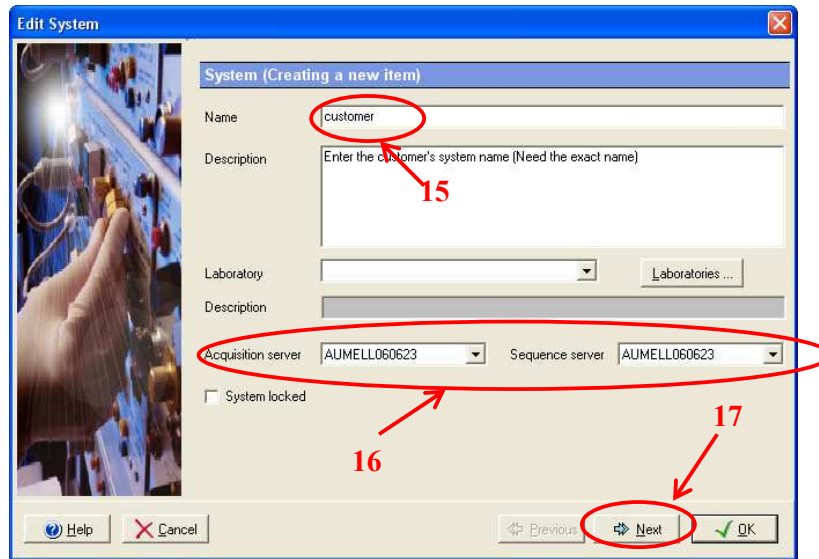


Figure 8: Entering the system name.

10. Click the *Select all* button (18) to associate the project to the appropriate group, and then click *Next* (19) again.

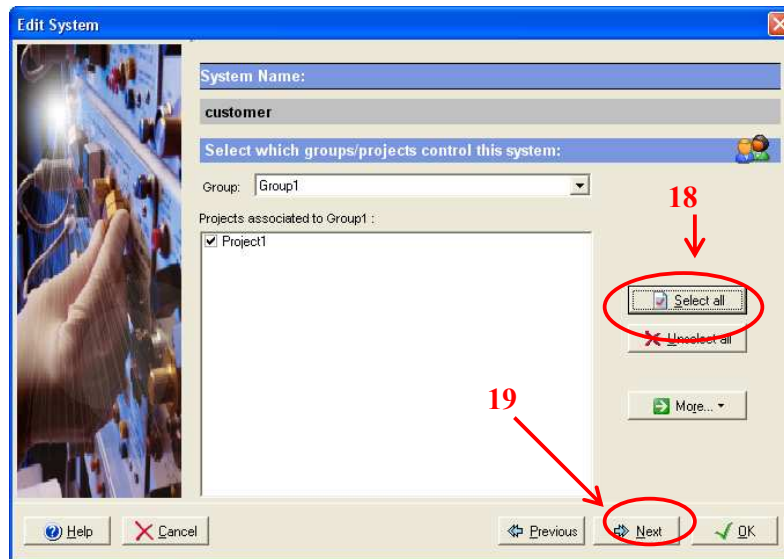


Figure 9: Associating the project with the group

11. Under the instrument device(s) installed section select the *Add* button (20), and an *Add new Device* window will open. From the *Device Type* pull down menu select the *Varian 900-LC Series driver* (21). Click the *OK* button (22) to continue. Once the driver appears in the *Instrument device(s) installed* window, you can click *OK* (23).

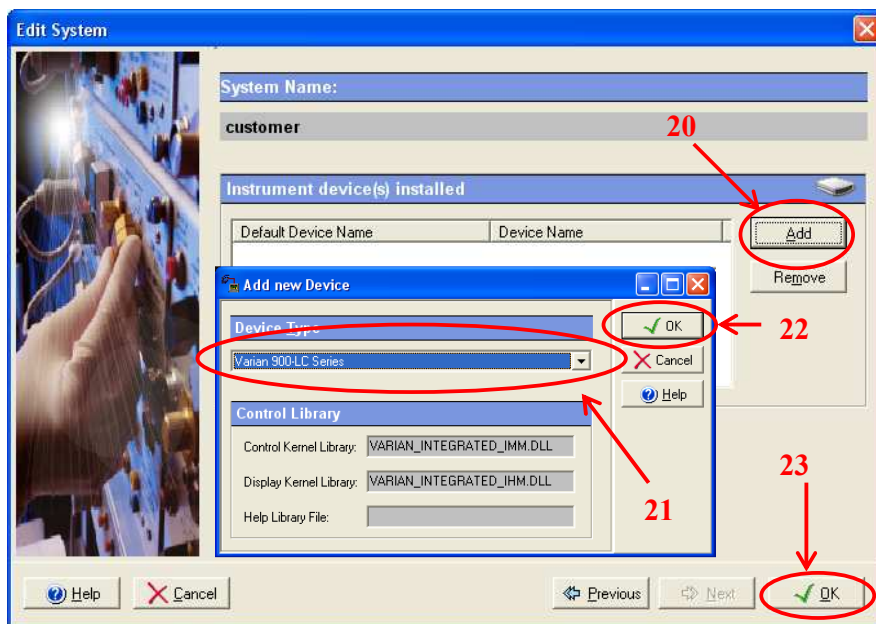


Figure 10: Loading the 900 driver for the virtual system

12. You will now be prompted to configure your "newly" created system. Click the Yes button (24).

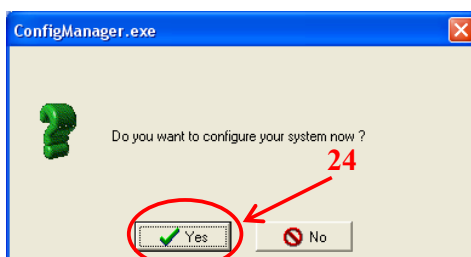


Figure 11: Configuring the new system

13. You will hear a beep and after a short wait, the system will appear (Figure 12). You can now click OK (25) and close the Configuration Manager.

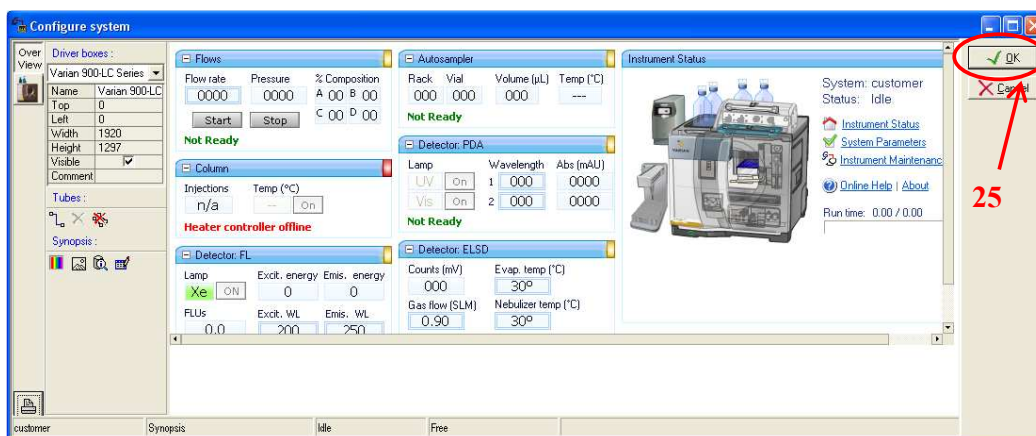


Figure 12: Newly created system

14. Open up Galaxie select the newly created system (I will select the 920LC (26) system since I actually have a customer file that was sent to me for that system).

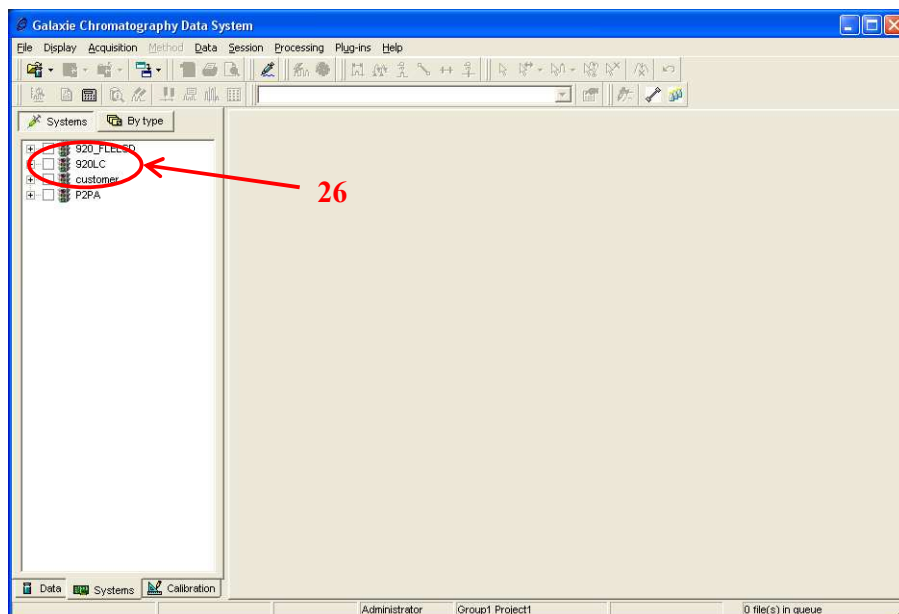


Figure 13: Selecting the newly created customer system

15. After a short delay in which you will see the hourglass symbol for the mouse appear a few times, you will here a beep and the selected system will be opened. Click OK (27) for any error messages you see once your system appears. These messages relate to comms issues with the hardware, which in this case does not exist as this is a virtual system.

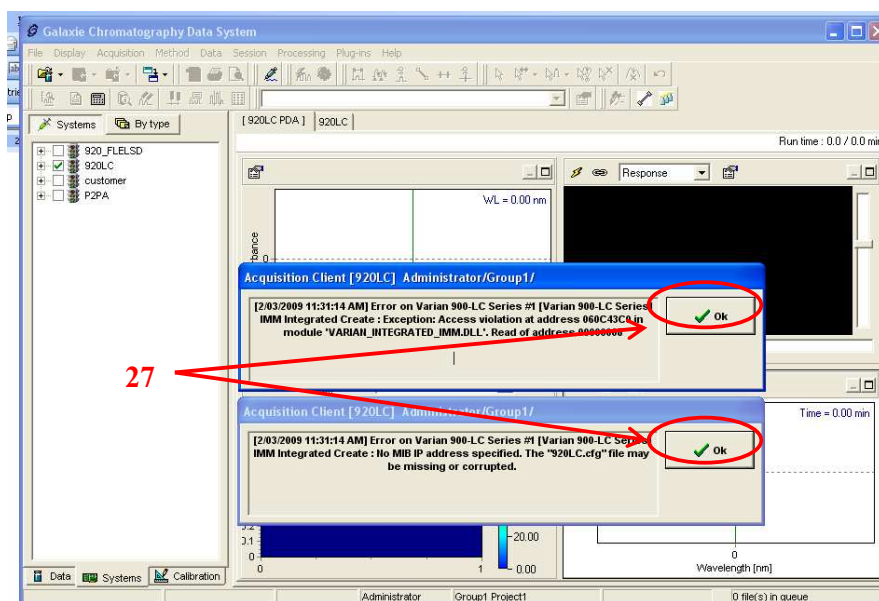


Figure 14: Error messages when selecting the new system

16. Open the method you need (28).

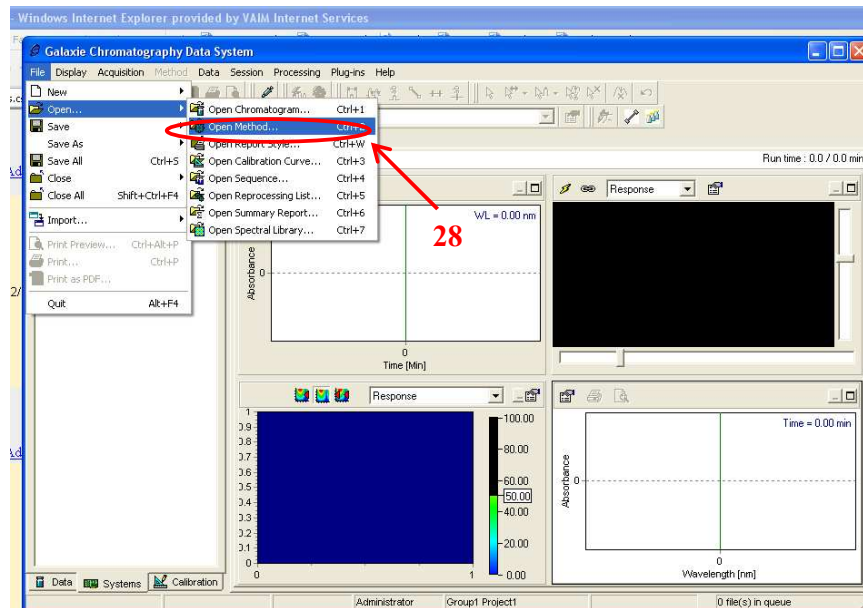


Figure 15: Opening a method

17. Click on the control (29) section of the method, and then select any of the modules you want to show the method settings for (30).

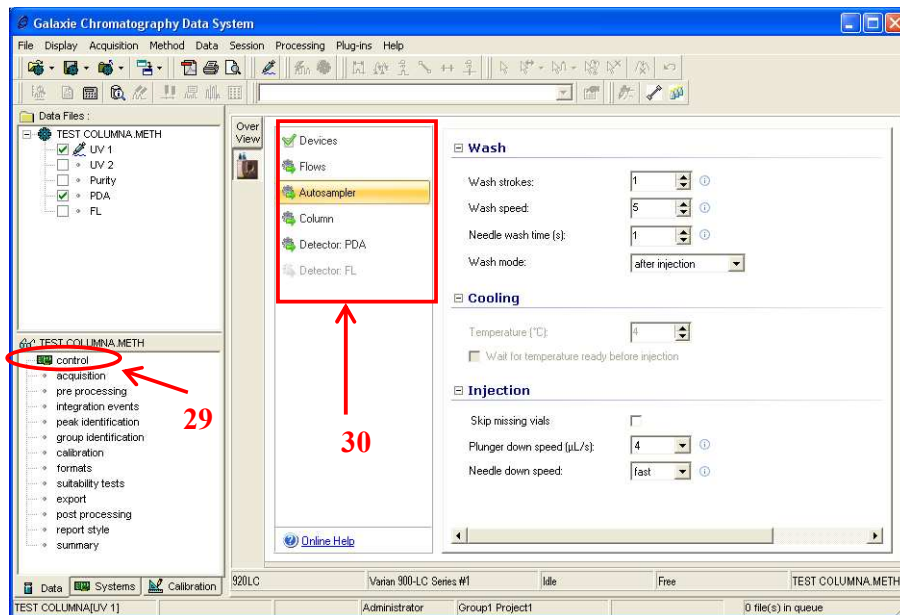


Figure 16: Checking the method in Galaxie