



VARIAN

SERVICE How To

Number: SHT-900LC - 13

Date: August 31, 2010

Page 1 of 5

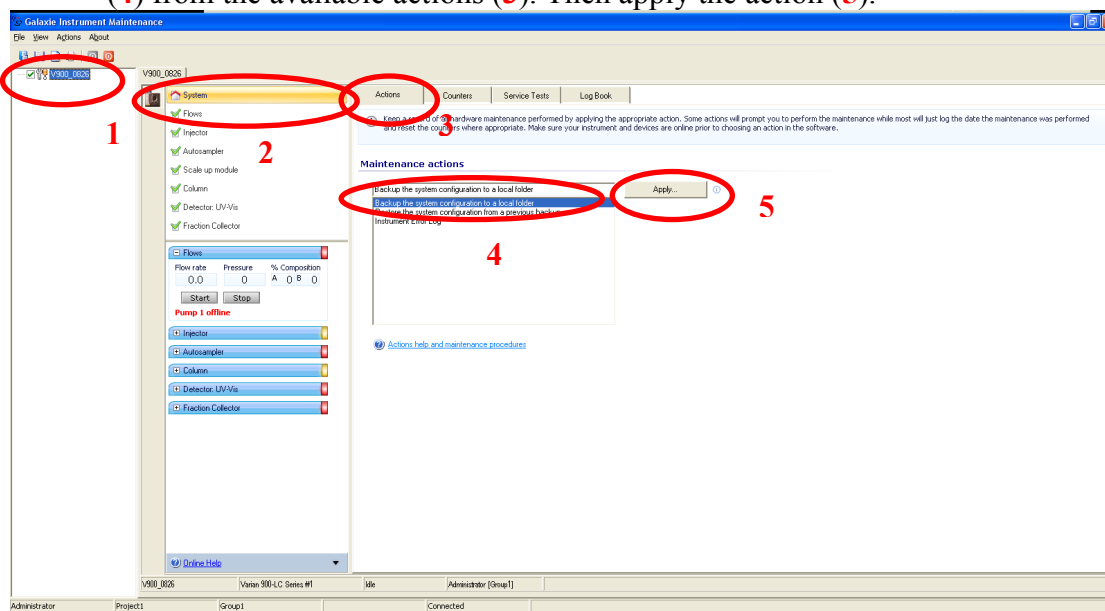
Model Number: 900-Series LC	Originator: P. van Poppel	Topic MIB Replacement Procedure
---------------------------------------	-------------------------------------	---

900LC MIB replacement procedure

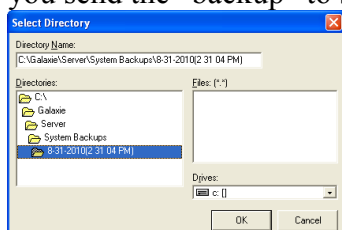
In order to replace the MIB on a 900LC you can store a copy of the details of the MIB. This can then be used to set up the new MIB.

Procedure:

1. Open the IMS, connect to the 900 instrument in the IMS (1) make sure that “system” is selected on the centre part of the screen (2) and select “backup” (4) from the available actions (3). Then apply the action (5).

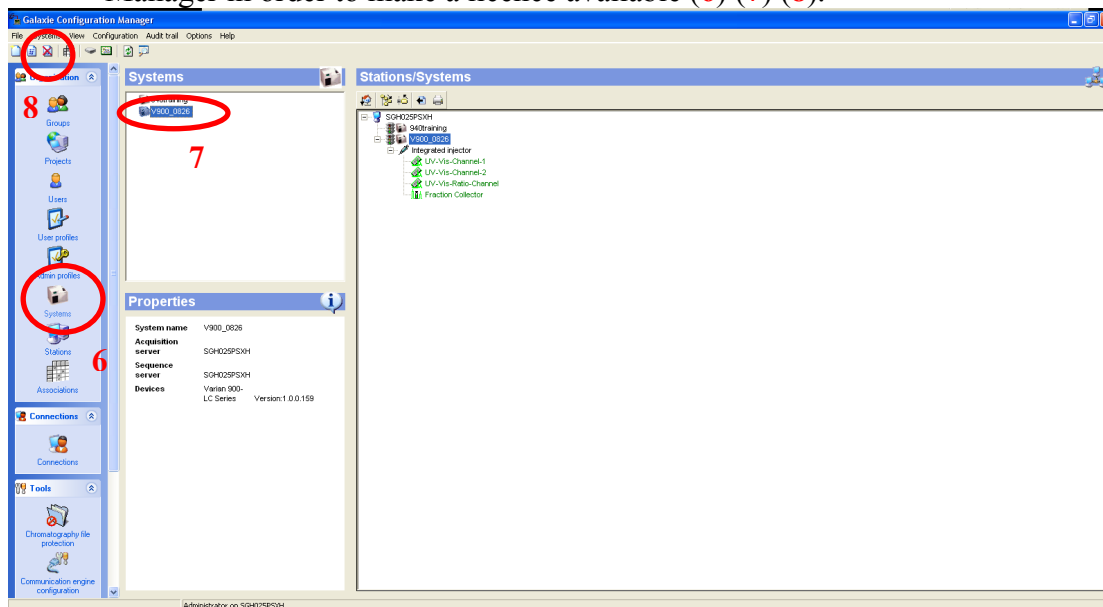


2. If you decide not to store the backup in the default location, make sure that you send the “backup” to somewhere that you can easily find it back.

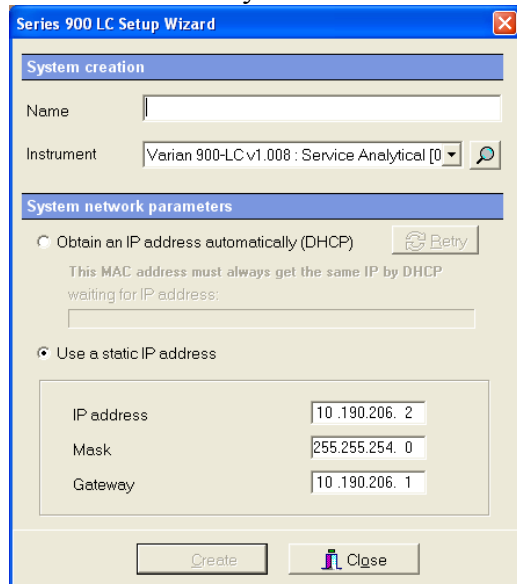


3. Disconnect from the instrument and close the IMS.

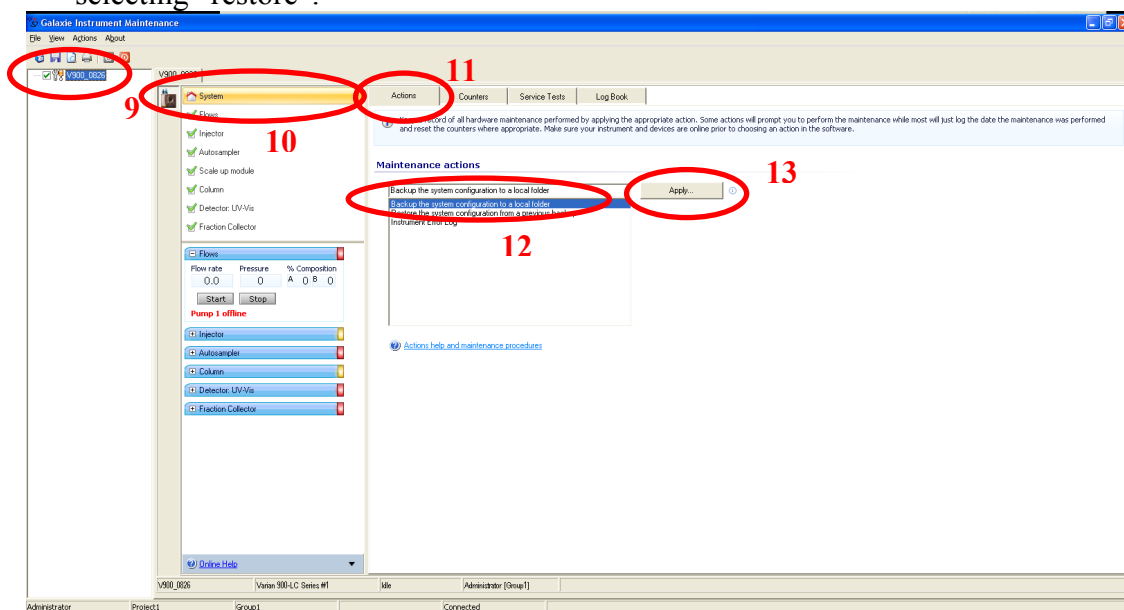
4. You are now ready to replace the MIB with a new one while the power is turned off.
5. Once the MIB is replaced, remove the instrument in the Galaxie Configuration Manager in order to make a licence available (6) (7) (8).



6. Turn on the instrument and create a system using the wizard, making sure to use the same system name as before.

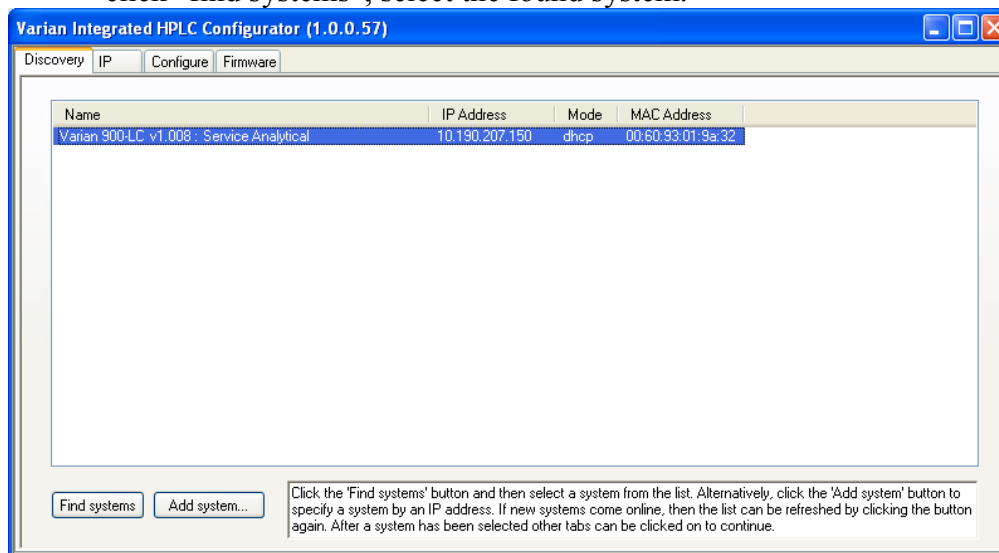


7. Once the system is created, open the IMS again and connect to the created system. Then restore the previously created backup following step 1, this time selecting “restore”.

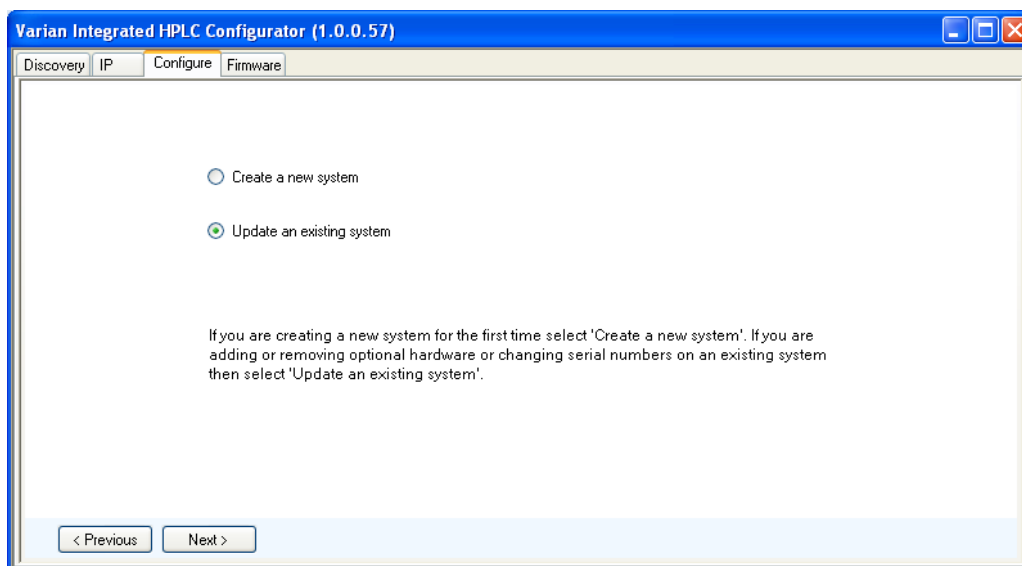


8. Then Reboot the system and software.

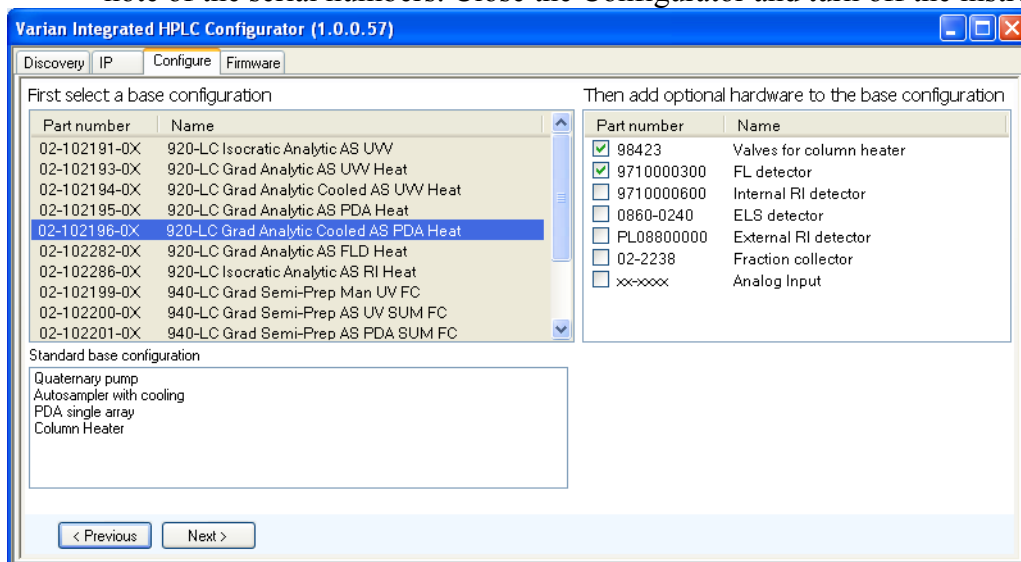
9. Alternatively, **instead of steps 1 to 8**, open up the Service Configurator Tool, click “find systems”, select the found system.



10. Make accurate note of the IP details, navigate to the “configure” tab and select “update an existing system”. Then click “next”.

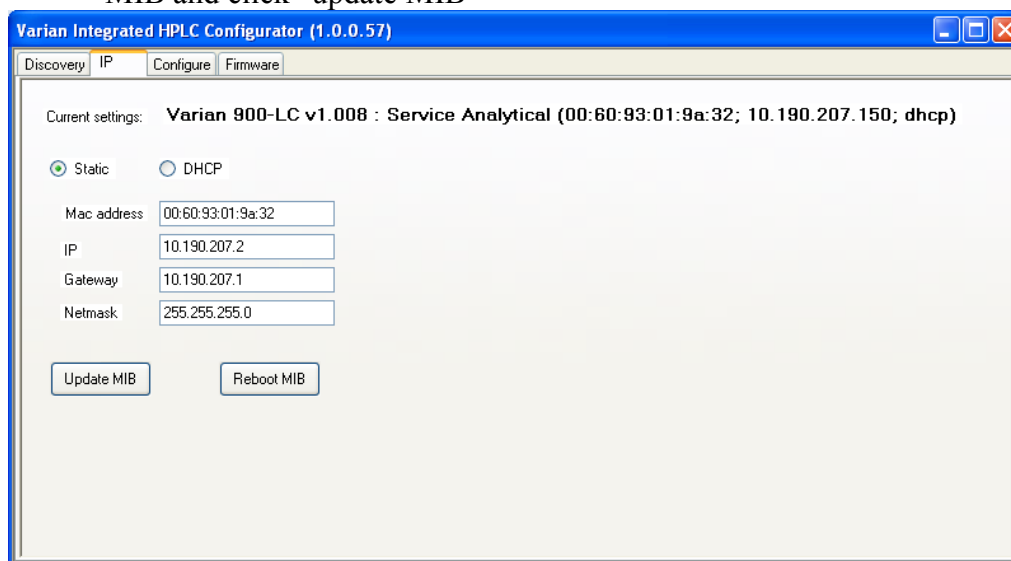


11. Make accurate note of the shown configuration details. Click next and make note of the serial numbers. Close the Configurator and turn off the instrument.



12. You are now ready to replace the MIB with a new one while the power is turned off.
13. Turn the power back on after the replacement and repeat step 9.

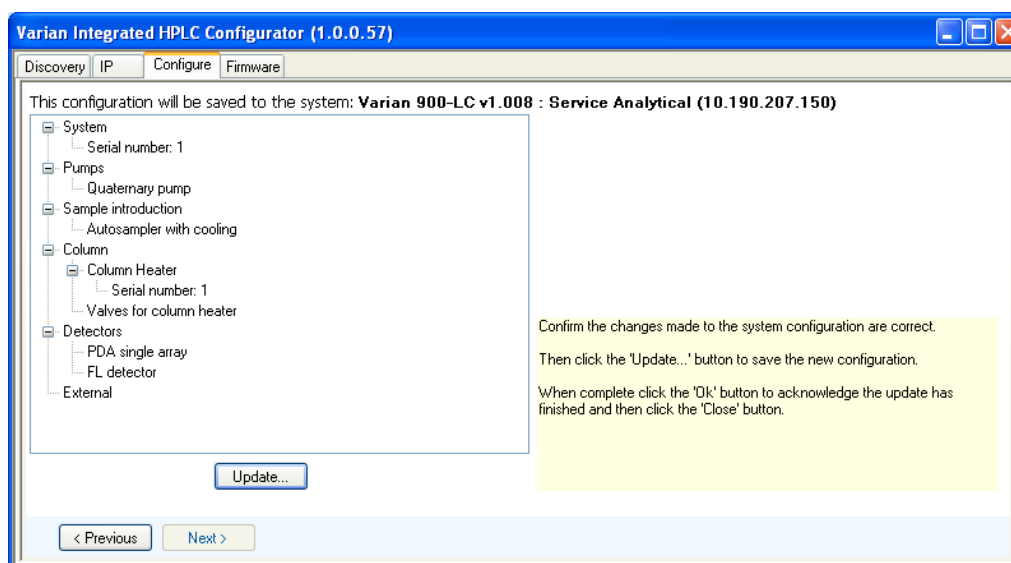
14. Enter the previously noted IP details in the IP tab after connecting to the new MIB and click “update MIB”



15. Navigate to the “configure” tab and select “create a new system”. Then click “next”.

16. Make sure you select the details and serial numbers as noted in step 11

17. Click next again after entering the serial numbers and “update” the MIB



18. Then close the Configurator and reboot the instrument.

19. The original Galaxie system should now be able to communicate with the new MIB.