



Number: SHT-Galaxie - 01

Date: May 30, 2008

Page 1 of 2

VARIAN

SERVICE How To

| | | |
|----------------|-------------------------|------------------------------|
| Model Number: | Originator: | Topic |
| Galaxie | Petro van Poppel | Opening a “.CFG” file |

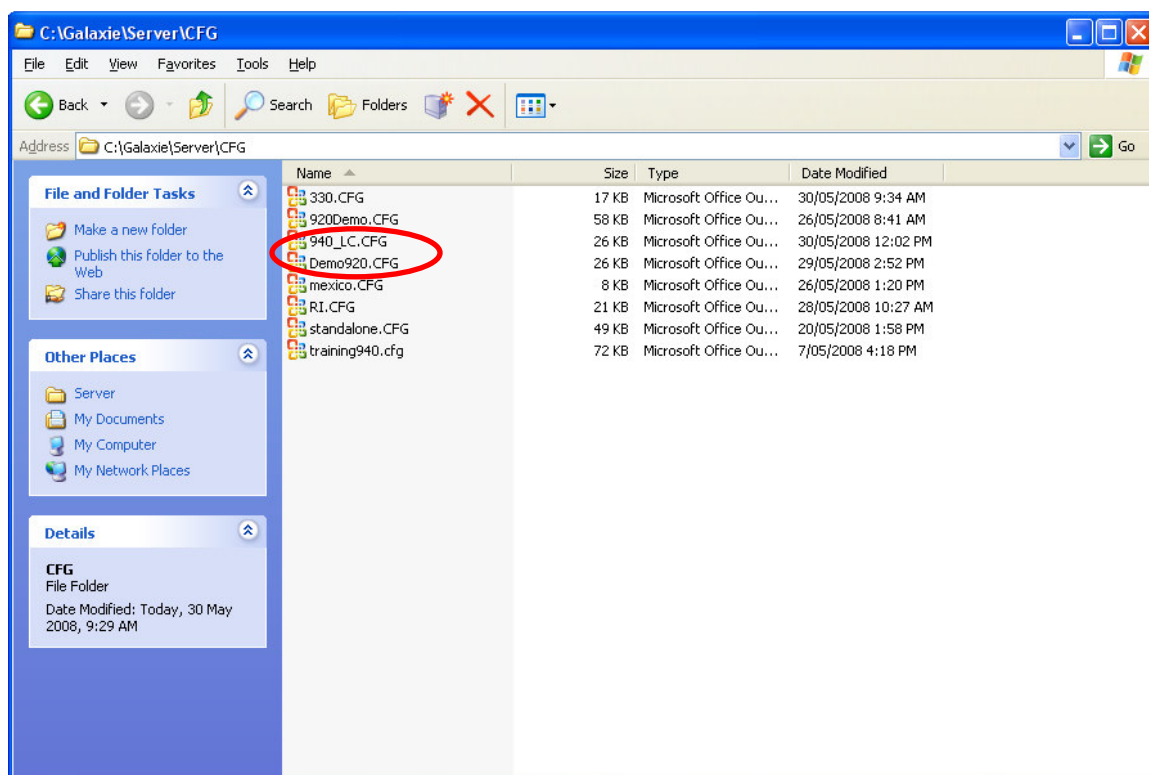
Opening a “.CFG” file in Galaxie:

In order to copy the exact setup of an instrument that a customer may have, you need to retrieve the “.CFG” file relating to this instrument and the hardware details and open it in your Galaxie copy.

Procedure:

1. On the customers PC, find the CFG file in the following location and store it:

C:\Galaxie\Server\CFG”



2. On your own PC, place the CFG file in the same location.

3. In the Galaxie Configuration Manager, create a system with the same name, ensuring you include the drivers for the hardware that the customer has.

Edit System

System (Properties edition)

Name: 940_LC

Description:

Laboratory: [] Laboratories ...

Description:

Acquisition server: AUMELL070504 Sequence server: AUMELL070504

☐ System locked

Help Cancel Previous Next OK

Edit System

System Name:

940_LC

Instrument device(s) installed

| Default Device Name | Service Name |
|----------------------|-------------------------|
| Varian 900-LC Series | Varian 900-LC Series #1 |

Add Remove

Help Cancel Previous Next OK

4. OK the new instrument and press F5 to update the Galaxie Configuration Manager.
5. You can now open the instrument and review any of the settings used.