



**VARIAN**

**Number: SHT-PS325-06**

**Date: December 20, 2006**

**Page 3**

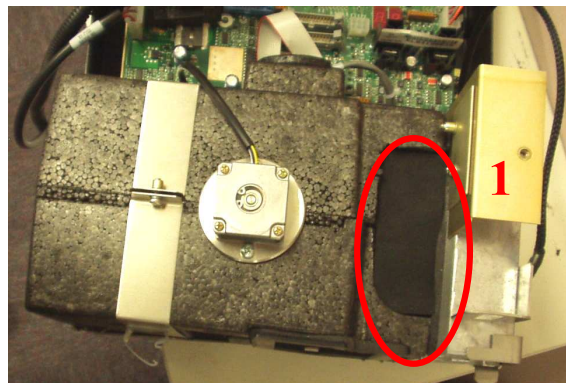
## ***SERVICE How To***

Model Number:	Originator:	Topic
PS 325 UV-Vis	Des Wichems	Vis Lamp Installation

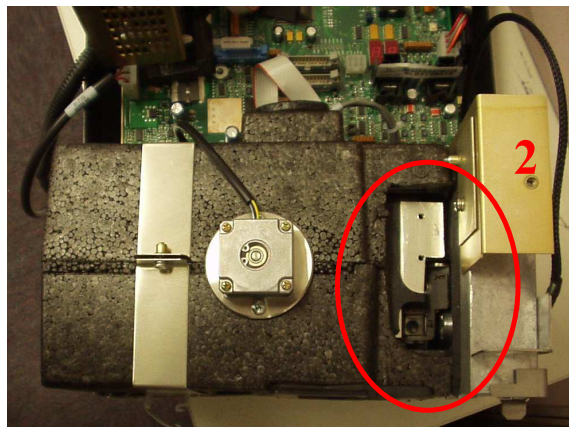
### **Vis Lamp Installation**

**(to be conducted by a Varian Trained Service Engineer only)**

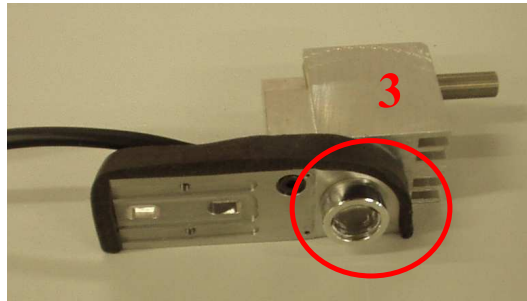
1. Disconnect the electrical power from the detector and then open the covers. When looking down on the optics module, find the black foam piece (1). This foam piece will be a metal plate on newer 325 detectors.



2. Remove the foam piece by picking at the edges of it. If there is a metal plate, remove the screws holding the metal plate down.



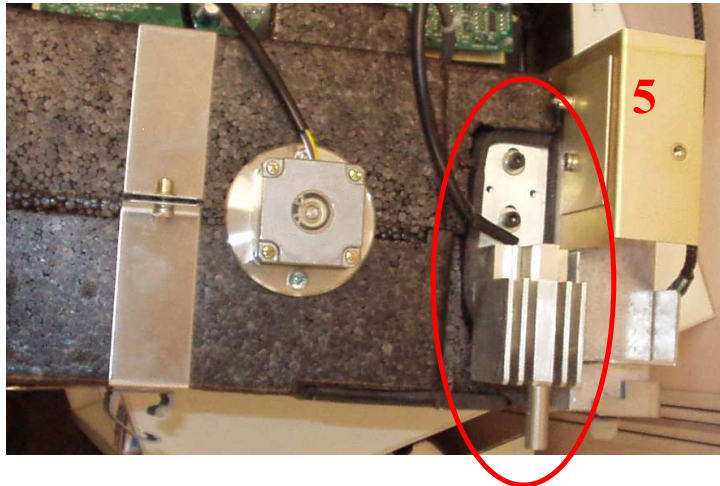
3. Once the foam or the metal plate has been removed you will see a hole looking down into the optics (2) on the front side of the optics (the side closest to the front panel), and 2 screw holes that you will use to mount the Vis option on the back side of the opening (side furthest from front panel)
4. Pick up your Vis option and position it so that the lens (3) fits into the hole leading to the optics.



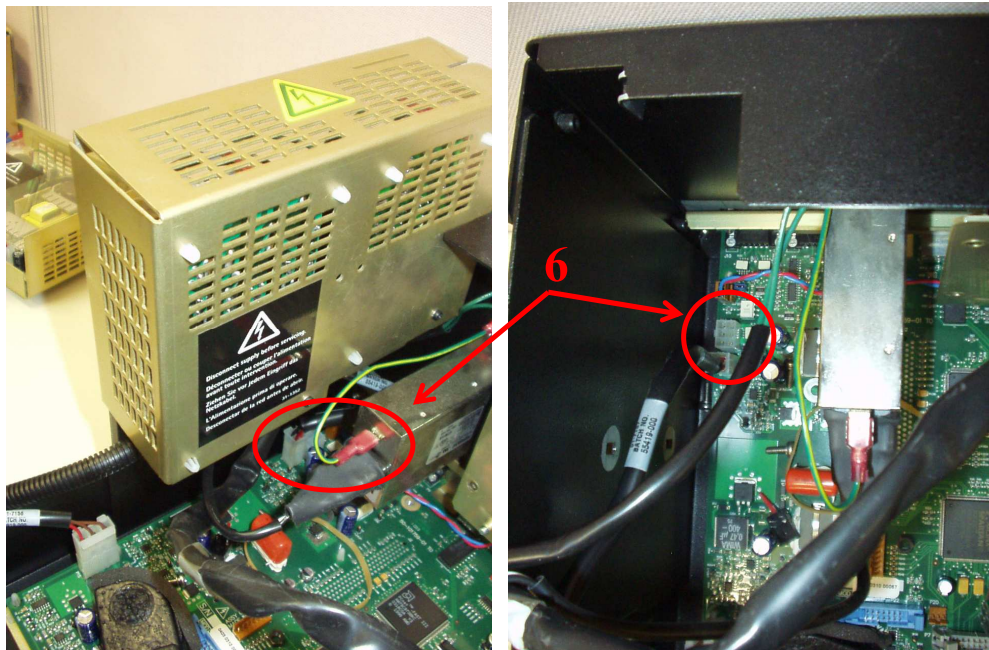
5. Insert the 2 spacers (small disks) with the smooth flat side facing up into the Vis opening (4) over the screw holes.



6. Carefully place the Vis option over the opening making sure that the lens fits nicely into the hole leading to the optics. Once the Vis option is in position (5), lightly tighten the provided screws.



7. Connect the power loom from the Vis assembly to the plug connector under the main power module (6) in the back of the detector.



8. Once the power supply has been moved back down and everything is connected plug the detector back into the power outlet and turn it on. Once it is on turn on the Vis lamp and make sure that the lamp image covers the flow cell windows. If it doesn't move the Vis Assembly until it does and tighten the screws. ***Usually very minimal adjustment is necessary.***