

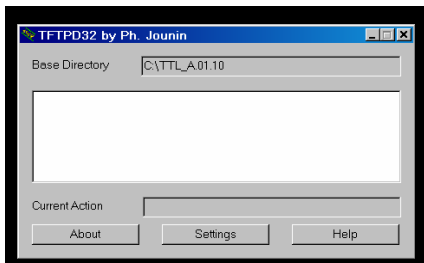


## Updating the Firmware of a G1369A LAN Interface

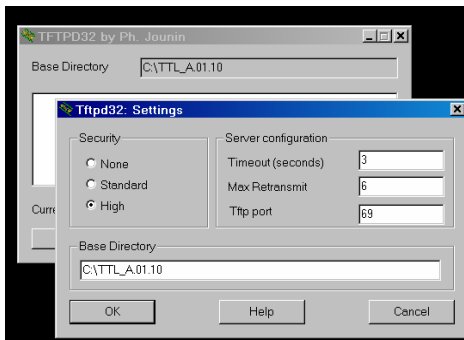
1. Find out the IP address of your PC and the current revision of the G1369A LAN Interface.
  - a. The module that hosts the LAN Interface is on.
  - b. Your PC is connected to the LAN Interface.
  - c. Press Start – Run ... and type “cmd” and press OK.
  - d. At the > type “ipconfig and press Enter.
  - e. Note the IP address of the PC.
  - f. Open a Telnet session to the G1369A LAN card. Type “telnet <adr>”, where <adr> is the Hostname of the card or its IP address in dotted notation.
  - g. Type “/” and press Enter. The current settings of the LAN card are displayed.

```
C:\WINDOWS\system32\cmd.exe - telnet tt10001
Agilent Technologies TalkToLab
>/
Product ID       : G1369A
Firmware Rev.   : A.01.05
MAC Address      : 0030d309735f
-----
Init Mode       : Using Stored
-----
TCP/IP Properties
- Active -
IP Address      : 134.40.28.100
Subnet Mask     : 255.255.248.0
Default Gateway : 134.40.24.1
-----
Controller      : not connected
>
```

- h. If the firmware revision is below the revision you want to install, continue with the step 2. Otherwise, exit the telnet session by typing “exit”. Close the cmd-box.
2. Start a TFTP server program (e.g. tftpd32.exe) on your PC or any other PC in the network.



3. Make sure that the Base Directory is set to the directory containing the firmware file (e.g. 1369a110.bin). If necessary, press “Settings” to change the base directory.



Press “OK” to confirm changes.



- At the card's prompt type "fwupdate <adr> 1369A110.bin", where <adr> is the IP address of the PC on which you started the TFTP server.

```
C:\WINDOWS\system32\cmd.exe - telnet tt10001
Agilent Technologies TalkToLab
>fwupdate 134.40.25.46 1369a110.bin_
```

Press Enter and do not interrupt the update process.

- When the card prompts "Firmware update done", exit the Telnet session by typing "exit".

```
C:\WINDOWS\system32\cmd.exe - telnet tt10001
Agilent Technologies TalkToLab
>fwupdate 134.40.25.46 1369a110.bin
Received 700928 bytes in 1.7 seconds.
Received 400988 bytes/second.
Checking application size ... OK
Copy current application to lower area at ffe10000
=====
Enable copy of current application = ffe10000
Start programming new application at fff10000
=====
Write of new application done.
Enable new application at fff10000
Firmware update done.
>exit_
```

- Close the TFTP server program and power-cycle the module that hosts the G1369A LAN card. The new firmware is now active. You may check this by opening the Telnet session again and type "/" at the card's prompt.

```
C:\WINDOWS\system32\cmd.exe - telnet tt10001
Agilent Technologies TalkToLab
>/
Product ID      : G1369A
Firmware Rev.  : A.01.10
MAC Address    : 0030d309735f
-----
Init Mode      : Using Stored
-----
TCP/IP Properties

- Active -
IP Address     : 134.40.28.100
Subnet Mask    : 255.255.248.0
Default Gateway : 134.40.24.1
-----
Controller     : not connected
>
```

- Close the cmd-box.