

HP CaLan 85921B Cable TV Data Management Software

Product Overview



Automation Saves You Time

Automate the transfer, analysis and long-term storage of your measurement data with the HP CaLan 85921B cable TV data management software. The HP CaLan 85921B allows direct PC transfer of measurement data from the HP CaLan 8591C cable TV analyzer as well as the 2010B SLM *Plus* and entire 3010 family of HP CaLan sweep gear.

Direct data transfer saves time, simplifies report generation and analysis, and helps you maintain the integrity of the data used to track cable TV system performance.

You can also use the HP CaLan 85921B's manual data entry feature to combine test results from other pieces of test equipment for your analysis.

Find Trends, Predict Failures

The general reporting and graphical analysis features of the HP CaLan 85921B help you to identify system performance trends. You can choose what data to analyze; whether it be data from one location over time, from all locations on a certain date, or from one instrument. The flexibility of the HP CaLan 85921B will help you to find and fix problems before they become customer complaints.

Compliance Reporting

Take the pain out of your semi-annual proof-of-performance reporting with Option 30 of the HP CaLan 85921B. This option adds the ability to compare measurement results against your own system performance specifications, or use the test limits defined by the FCC in the US. Option 30 also provides FCC report generation, reducing the time and effort required to create an FCC compliance report. Instead of spending endless

hours creating an FCC report, your system engineer can now spend more time ensuring the quality of your system and the satisfaction of your customers.

Flexible Operation

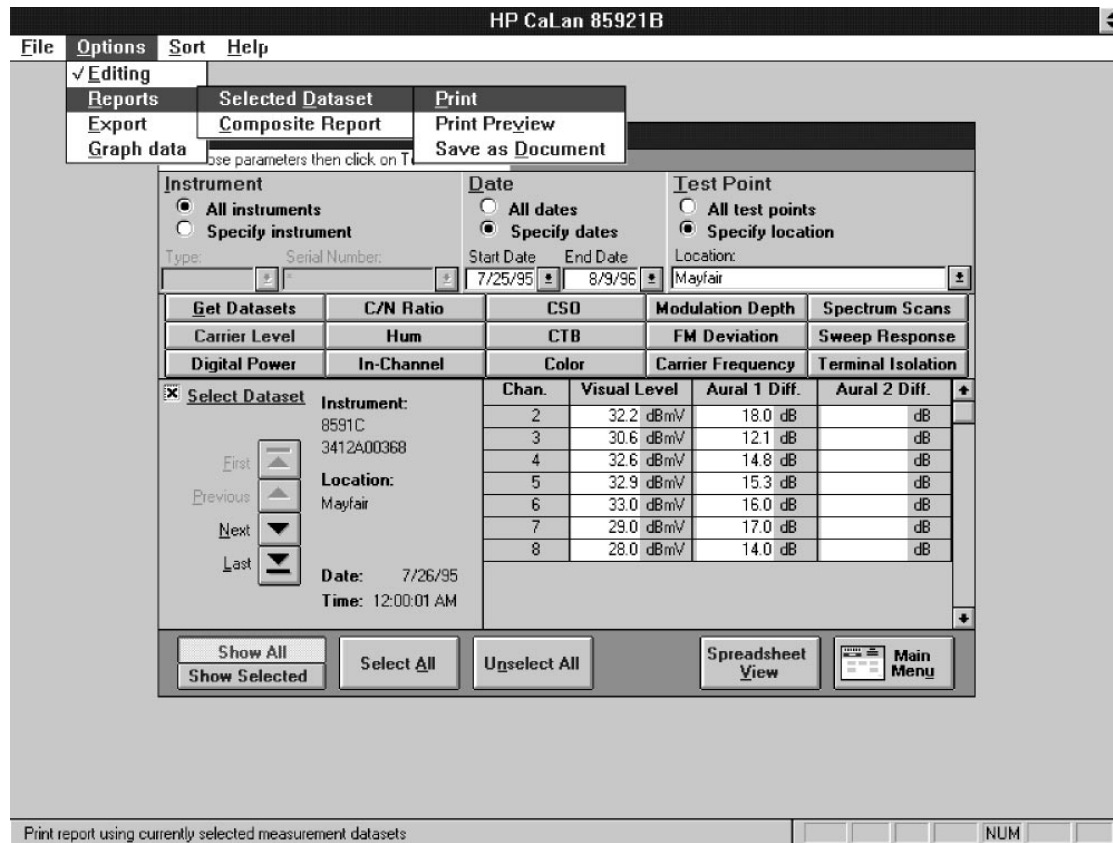
The cable TV data management software also allows you to do the following:

- Create a common test plan that can be downloaded into each HP CaLan 8591C; ensuring

consistency in the tests your technicians are making

- Create and edit channel plans and sweep tables once and copy them to all of your HP CaLan 2010B's and entire HP CaLan 3010 family of instruments

- Export measurement data and graphs to your word processor or spreadsheet



The HP CaLan 85921B cable TV data management software provides you with the flexibility to choose what data to analyze and how you want to see it.

HP CaLan 85921B - [Signal Level Report]

File

Carrier Signal Level Data

By Location/Date/Time

Bow Street

Location: Bow Street

Comment: au1test3/sample 4

Instrument: 8591C 3322A00051

Tester: Hernandez, Seberio

Temperature: 59 °F 15 °C

Date: Time: 5:00 AM

Chan ID	Visual Level (dBmV)	Aural Level 1 (dBmV)	Aural Level 2 (dBmV)	V/A1 Diff (dB)	V/A2 Diff (dB)	V/A1 Diff Status	Visual Level Status	Adj. Channel Status
4	28.00	11.00		17.00		PASS	PASS	N/A
9	28.00	11.00		17.00		PASS	PASS	N/A
13	28.00	11.00		17.00		PASS	PASS	N/A
16	28.00	11.00		17.00		PASS	PASS	N/A
18	28.00	11.00		17.00		PASS	PASS	N/A
27	28.00	11.00		17.00		PASS	PASS	N/A
91	28.00	11.00		17.00		PASS	PASS	N/A

Location: Bow Street

Comment:

Instrument: 8591C 3322A00052

Tester: Chism, Rick

Temperature: 74 °F 20 °C

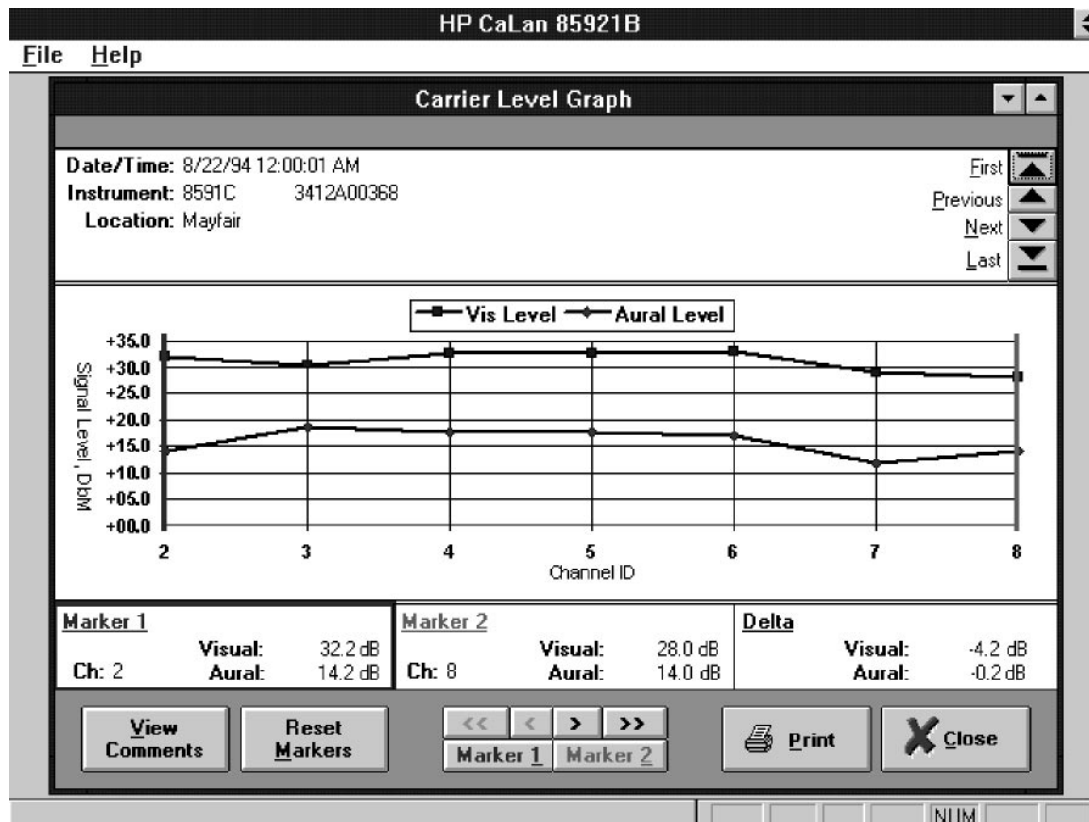
Date: Time: 12:33 PM

Chan ID	Visual Level (dBmV)	Aural Level 1 (dBmV)	Aural Level 2 (dBmV)	V/A1 Diff (dB)	V/A2 Diff (dB)	V/A1 Diff Status	Visual Level Status	Adj. Channel Status
3	9.30	13.60		-4.30		FAIL	PASS	N/A
22	8.90	3.80		5.10		FAIL	PASS	N/A

Page: 2

NUM

General reporting lets you quickly and conveniently see pass/fail results of your data.



The graphical analysis feature gives you a visual picture of your system's performance; you can view carrier levels, sweep results and spectrum scans.



Analyzer and PC Requirements

The software is compatible with the HP CaLan 8591C cable TV analyzer (NTSC format only) and the 2010B SLM Plus and 3010 family of sweep gear (all formats).

Minimum requirements to run the software are a 486/66 MHz PC with SVGA monitor, MS Windows® 3.1 with MS-DOS® 6.2 or Windows 95, 16 Mbytes of RAM and 30 Mbytes of free disk space. The recommended configuration is a Pentium® 133 MHz with 40 Mbytes of free disk space. The software is not Windows NT compatible.

The following cables are included with the software:

9-pin to 9-pin RS-232 cable for the HP CaLan 8591C
9-pin to 9-pin RS-232 cable for the HP CaLan 2010B and 3010B/R/H

Note: 25-pin RS-232 configurations will require the ordering of separate cables. Two common connection configurations are:

9-pin to 25-pin RS-232 cable for the HP CaLan 8591C (part # 24542G)
9-pin to 25-pin RS-232 cable for the HP CaLan 3010A (part # 24542M)

Ordering Information

- ☐ HP CaLan 85921B Cable TV Data Management Software
 - ☐ Option 030 Adds Compliance Reporting Capability (FCC)
 - ☐ Option 910 Extra Users Manual

You can also order this software as an option to the following test equipment:

- ☐ HP CaLan 8591C Cable TV Analyzer
 - ☐ Option 030 Cable TV Data Management Software w/FCC
- ☐ HP CaLan 85960B 2010B SLM *Plus*
 - ☐ Option 030 Cable TV Data Management Software w/FCC
 - ☐ Option 031 Cable TV Data Management Software
- ☐ HP CaLan 85961B 3010B Sweep/SLM *Plus*
 - ☐ Option 030 Cable TV Data Management Software w/FCC
 - ☐ Option 031 Cable TV Data Management Software
- ☐ HP CaLan 85962A 3010R Sweep/Ingress Analyzer (field unit)
 - ☐ Option 030 Cable TV Data Management Software w/FCC
 - ☐ Option 031 Cable TV Data Management Software
- ☐ HP CaLan 85963A 3010H Sweep/Ingress Analyzer (headend unit)
 - ☐ Option 030 Cable TV Data Management Software w/FCC
 - ☐ Option 031 Cable TV Data Management Software

MS Windows® and MS-DOS® are U.S. registered trademarks of Microsoft Corp.
Pentium® is a U.S. registered trademark of Intel Corporation.

For more information on HP CaLan's products, applications or services in the U.S. please call 1-800-452-4844 Ext. HPTV. For international inquiries, please contact your local Hewlett-Packard sales office. A current listing is available via the Worldwide Web through AccessHP at <http://www.hp.com>. A listing of the complete HP CaLan product offering is also available on the Worldwide Web at <http://www.hp.com/go/catv>.

Data Subject to Change
Copyright © 1996
Hewlett-Packard Company
Printed in U.S.A. 10/96
5964-1539E