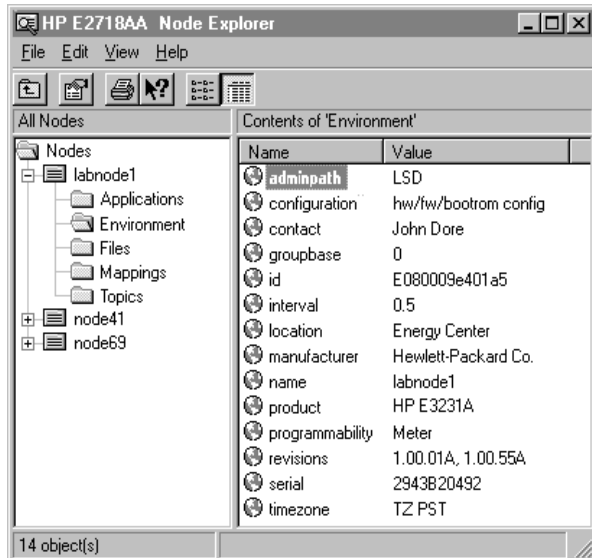


# HP Vantera System Management Tools

## System Tool Data Sheet

HP E2718AA  
Vantera Configuration and  
Administration Tool



See the state of a node or a system in a familiar, flexible window.

The HP Vantera measurement and control family is the foundation of open, adaptable solutions that connect decision makers at all levels of an enterprise to essential real-time operating information. When used with HP Vantera measurement and control devices, the software described here enables the configuration and administration of intelligent, distributed systems for applications such as energy cost management, building automation, and industrial automation.

### Configure and Manage HP Vantera Systems

The HP Vantera Node Explorer software lets you configure and manage a system from a single, flexible window. Through the familiar file tree interface, you can investigate the state of network applications and devices,

and make parameter changes. And the system discovery capability lets the node explorer detect when devices or applications are added to the network.

### Easily Adapt to Changes

In most measurement and control systems, configuration and management are labor-intensive tasks. A technician, perhaps on site, will configure the measurement hardware one unit at a time. Someone else may type in the name-space mapping by hand, and will have to make changes manually in the future. Poor configuration and administration tools leave systems—and system managers—resistant to change.

The distributed intelligence of the HP Vantera system helps reduce that resistance. System discovery capabilities mean that many setup

and management tasks can be done from a central location. Through the flexible user interface, you can revise hardware configuration or data mapping automatically, and on the fly. You can also download data and configurations dynamically into the measurement hardware. HP Vantera makes it easier to adapt to system changes.

### Configure Systems Quickly and Efficiently

The node explorer lets you configure and change the state of system applications, variables and nodes. For example, the first step in a troubleshooting process might be to configure 40 points to take voltage readings once per minute and publish the results on the network. After isolating the trouble spot, you decide to take readings every two minutes on 16 points and every half-hour on the other 24 points. With the node explorer, you only need to create two new node templates, then copy and paste those models onto the two respective groups of nodes.

### Find the Most Relevant View

The node explorer uses the HP Vantera system discovery capability to interrogate the system, create a snapshot of its structure, and display the results in a hierarchical file tree. After expanding a branch of the file

tree, you can use grouping and sorting functions to view the system state from the most relevant perspective. The system views are as adaptable as the system itself.

### Summary of Major Functions

#### Node Configuration Functions

- Node application configuration tool
- Node firmware downloading function
- Drag and drop configurations among nodes
- Copy and paste node configuration
- Save and restore node configuration

#### System Administration Functions

- Node browser and basic data viewer
- Configurable views of nodes and groups of nodes
- Windowed view of hardware diagnostics

### Ordering Information

HP E2718AA Vantera

Configuration and Administration Tool

Single run-time license. Order media and documentation separately.

### Software Media

HP E2725AA Vantera Software on CD-ROM

Contains all HP Vantera software and documentation.

### Related Products and Information

HP E2715AA Vantera Communication Services	p/n 5965-6193E
HP E2716AA Vantera Subnet Router Services	p/n 5965-6193E
HP E2717AA Vantera WAN Router Services	p/n 5965-6193E
HP E2720AA Vantera Application Developer's Toolkit	p/n 5965-6193E
HP E3231A Discrete I/O Node and E3232A Analog/Discrete I/O Node	p/n 5965-6188E
HP E3231A Option 001 Load Profile Recorder Application	p/n 5965-6191E
HP Vantera Product Family Brochure	p/n 5965-6190E
HP Vantera Solutions for Enhanced Energy Services	p/n 5965-6192E

### Operating System and Minimum Hardware Requirements

Runtime Workstation: Microsoft Windows NT™4.0; 100 MHz Pentium® processor, or equivalent; 20MB free disk space; 24MB RAM; 16- or 32-bit Ethernet 10Base-T LAN interface (refer to the Microsoft Hardware Compatibility List for current information).

Portable System: Microsoft Windows® 95; 90 MHz Pentium processor, or equivalent; 20MB free disk space; 16MB RAM; 16- or 32-bit Ethernet 10Base-T LAN interface (refer to the Microsoft Hardware Compatibility List for current information).

### Network Requirements

Ethernet 10Base-T with Internet Protocol (IP) stack.

For more information on Hewlett-Packard Test & Measurement products, applications or services please call your local Hewlett-Packard sales offices. A current listing is available via Web through AccessHP at <http://www.hp.com>. If you do not have access to the Internet please contact one of the HP centers listed below and they will direct you to your nearest HP representative.

United States:  
Hewlett-Packard Company  
Test and Measurement Organization  
5301 Stevens Creek Blvd.  
Bldg. 51L-SC  
Santa Clara, CA 95052-8059  
1 800 452 4844

Canada:  
Hewlett-Packard Canada Ltd.  
5150 Spectrum Way  
Mississauga, Ontario  
L4W 5G1  
(905) 206 4725

Europe:  
Hewlett-Packard  
European Marketing Centre  
P.O. Box 999  
1180 AZ Amstelveen  
The Netherlands  
(31 20) 547 9900

Japan:  
Hewlett-Packard Japan Ltd.  
Measurement Assistance Center  
9-1, Takakura-Cho, Hachioji-Shi,  
Tokyo 192, Japan  
Tel: (81-426) 56-7832  
Fax: (81-426) 56-7840

Latin America:  
Hewlett-Packard  
Latin American Region Headquarters  
5200 Blue Lagoon Drive  
9th Floor  
Miami, Florida 33126  
U.S.A.  
(305) 267 4245/4220

Australia/New Zealand:  
Hewlett-Packard Australia Ltd.  
31-41 Joseph Street  
Blackburn, Victoria 3130  
Australia  
1 800 629 485

Asia Pacific:  
Hewlett-Packard Asia Pacific Ltd  
17-21/F Shell Tower, Times Square,  
1 Matheson Street, Causeway Bay,  
Hong Kong  
Tel: (852) 2599 7777  
Fax: (852) 2509 9285

Data subject to change.  
Copyright © 1997 Hewlett-Packard Co.  
Printed 1/97  
5965-6189E