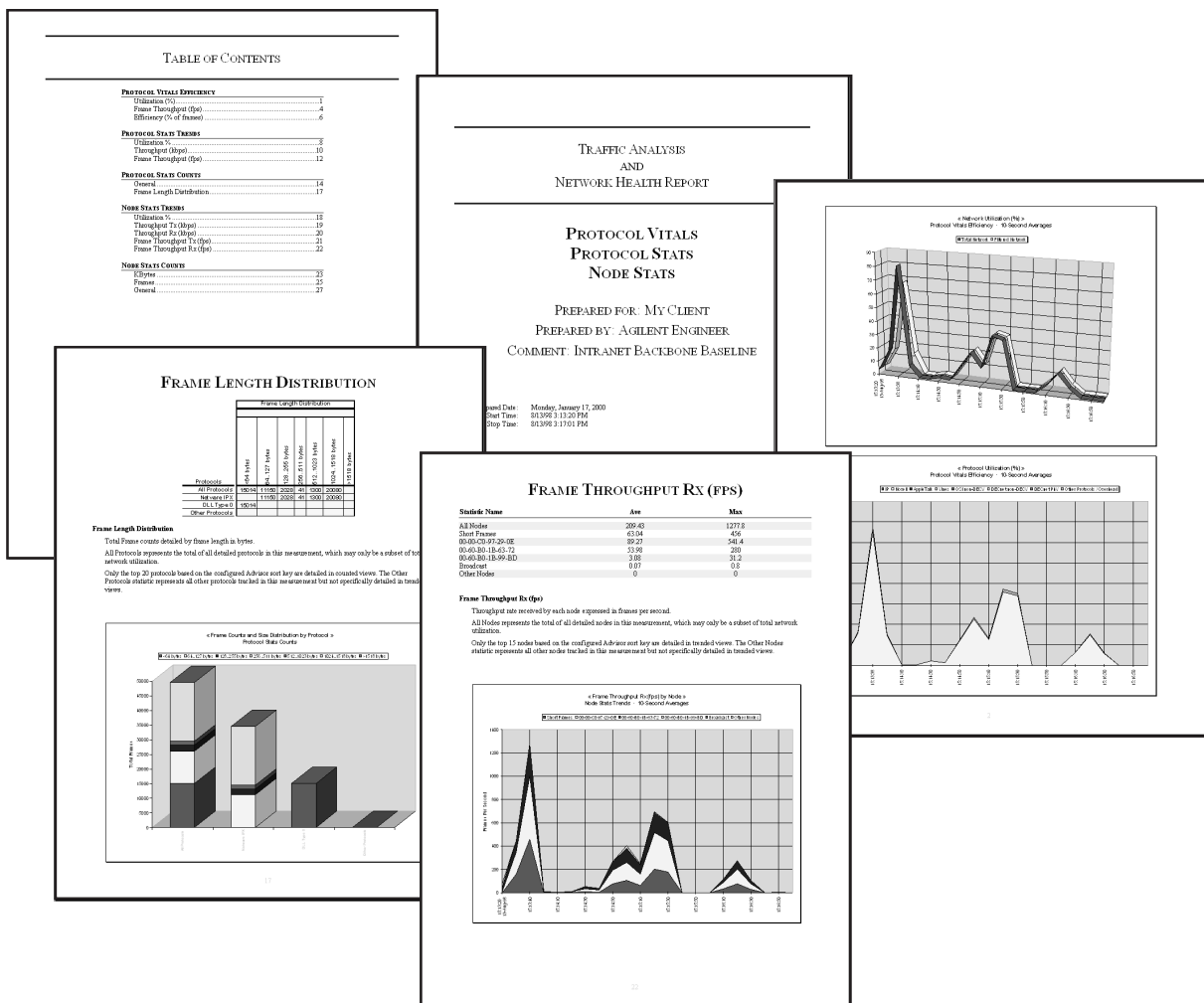


Agilent Technologies

Agilent Advisor Reporter

Technical Specification

Agilent Advisor Reporter extends the capabilities of the Advisor into the world of network baselining and benchmarking. More than just a powerful troubleshooting tool, the Advisor is capable of gathering an unparalleled array of LAN, WAN, and ATM statistics. Advisor Reporter taps into this data and automatically presents it in meaningful tables, charts, and fully-formatted reports.



Agilent Technologies

Innovating the HP Way

What Makes Agilent Advisor Reporter the Best Baselining and Benchmarking Tool For You?

Ease of Use

Advisor Reporter comes with built-in AutoReport Profiles that make your first reports as easy to create as selecting a file, choosing which measurements to report on, and pressing the GO! Button. Before your eyes, Advisor Reporter creates data tables and charts in Microsoft® Excel, or builds a fully-formatted report in Microsoft® Word, complete with a cover page and table of contents, inline statistics and glossary definitions for each measurement, and a wide range of embedded charts.

Advisor Reporter is so easy to use it can create in minutes a report that used to take days to produce.

Customizability

Advisor Reporter does not sacrifice power for ease of use. Advisor Reporter can work in either Automated Reporting or Custom Reporting mode. With Custom Reporting, you are prompted through all table, chart, or report options step-by-step, allowing you to maintain control over all aspects of the reporting process.

If you want the power of Automated Reporting and the flexibility of Custom Reporting, try the AutoReport Editor. Its well-organized graphical interface allows you to build your own profiles for use with Automated Reporting. These profiles can include such information as header, footer and cover page text, charts to include in the report, and number or date formats for the tables.

Microsoft Excel - Ethernet Demo.rss

File Edit View Insert Format Tools Data Window Help

Arial 8 B I U

Advisor Reporter Automated Reporting Custom Reporting Additional Tools

A12 =

	A	B	C	D	E	F	G	H	I	J	K	L	M	N	O	P	Q	R	S	T	U	V	W	X	Y	Z
1				Ethernet Details (per second)																		Novell Details				
2																										
3	Date	Time		Throughput (kbps)	Frame Throughput	Local Collisions	Late Collisions	Remote Collisions	Remote Late Collisions	Frames with Bad FCS	Runts	Misaligns	Filtered Throughput (kbps)	Filtered Frame Throughput	Runts with Good FCS	Jabbers	Jabbers with Bad FCS	Dribbles	Broadcasts	Multicasts	Capture Buffer Overwrites	Novell Throughput (kbps)	IPX Packet Throughput	IPX Bytes per Packet	IPX Local Transmission Rate	
5	13-Aug-98	15:13:20		324	77			0		0	0		324	77								312	77	509	77	
6		15:13:29		1861	354			126		126	126		1630	309								1577	200	987	200	
7		15:13:38		8103	1526			545		545	545	0	6729	1264					0			6512	812	1002	812	
8		15:14:00		855	163			56		56	56		1536	289					0			1486	188	987	188	
9		15:14:10		17	4			1		1	1		17	4								17	3	740	3	
10		15:14:20		29	10			1		1	1		29	10								27	8	402	8	
11		15:14:30		209	50			10		10	10		210	50								202	40	630	40	
12		15:14:40		132	34			5		5	5		132	34								127	28	558	28	
13		15:14:50		1245	230			66		66	66		1245	230				0				1206	165	916	165	
14		15:15:00		2334	434			113		113	113		2336	434								2263	321	882	321	
15		15:15:10		1308	249			61		58	58	0	1311	249				1				1269	191	831	191	
16		15:15:20		3712	670			194		195	195	0	3706	669								3593	475	947	475	
17		15:15:30		3485	631			184		184	184		3490	632								3383	448	945	448	
18		15:15:40		0	0								0	0								0	0	70	0	
19		15:15:50		0	0								0	0					0			0	0	86	0	
20		15:16:00																								

Protocol Vitals Efficiency | Protocol Vitals Details | Protocol Vitals Threshold

Ready | Sum=6-Aug-01 | NUM

Data collected from your Agilent Advisor is presented in an easy-to-read format.

Accuracy

A reporting tool is only as good as the data it processes. Very few network analyzers capture 100% of the data on most networks, especially at speeds of 100Mbps and greater. Fortunately, the Agilent Advisor is one of those few. And that means Advisor Reporter produces a much more accurate representation of network traffic than most other network reporting tools. Anything less just doesn't make sense.

Broad Range of Statistics

The Advisor offers an extremely varied array of statistics for all networks, from the physical layer up to the application layer. And many statistics can be customized through the use of filter counters to suit specific needs.

Going one step further, Advisor Reporter produces efficiencies for many statistics, factoring such things as error counts against utilization or successful call setups against requests. You can even edit CIR rates on frame relay circuits to see if they are really delivering or utilizing the bandwidth that is being paid for.

Broad Range of Network Interfaces

Advisor Reporter produces consistent reports from a wide variety of network types, making it the only reporting tool you'll need. One product supports all of these technologies:

- Ethernet
- Token-ring
- FDDI
- Fast Ethernet
- HDLC/SDLC
- Frame relay
- X.25
- ISDN
- PPP
- ATM
- LAN over WAN and ATM
- WAN and ATM BERT

Understanding

With all of the statistics Advisor Reporter produces, understanding specifically what they mean isn't left to chance. A complete glossary is generated as part of your reports that explains statistic by statistic what you're looking at and how it was calculated. Nothing can be more frustrating than looking at a chart and not really knowing what it represents. The Advisor Reporter makes it easy.

True Presentation – Quality Output

Every aspect of every table, chart, and report that Advisor Reporter creates is painstakingly reviewed for readability and accuracy. The result is true presentation-quality output. Tables, charts, and reports are ready to go to the printer (and your colleagues or clients) without requiring extra formatting, cutting, or pasting.

Microsoft® Office 2000 Integration

A cornerstone of Advisor Reporter's heritage is complete integration into the Microsoft Office environment. This integration affords a degree of flexibility not achievable with other standalone applications. By keeping your data in Excel and Word compatible formats, you can use the full power of these applications to further manipulate your reports. Change data values, create new efficiencies, edit names, add balloon text or notes, even modify a complete report to work on your company's letterhead.

A Wide Range of Applications

Advisor Reporter makes quick work of sifting through large quantities of network data. With this ease of reporting, you will find yourself using your Internet Advisor for a much wider range of tasks than you expected from a network analyzer. Here are just a few of Internet Reporter's many potential applications:

Baselining

- Quickly visualize and isolate difficult to spot network problems
- Document healthy networks for future reference when problems arise
- Identify and solve developing problems before they become real problems
- Balance your bandwidth for maximum efficiency
- Stay ahead of the capacity planning curve
- Cost-justify network component upgrades
- Manage virtual circuits and control costs on WAN and ATM lines

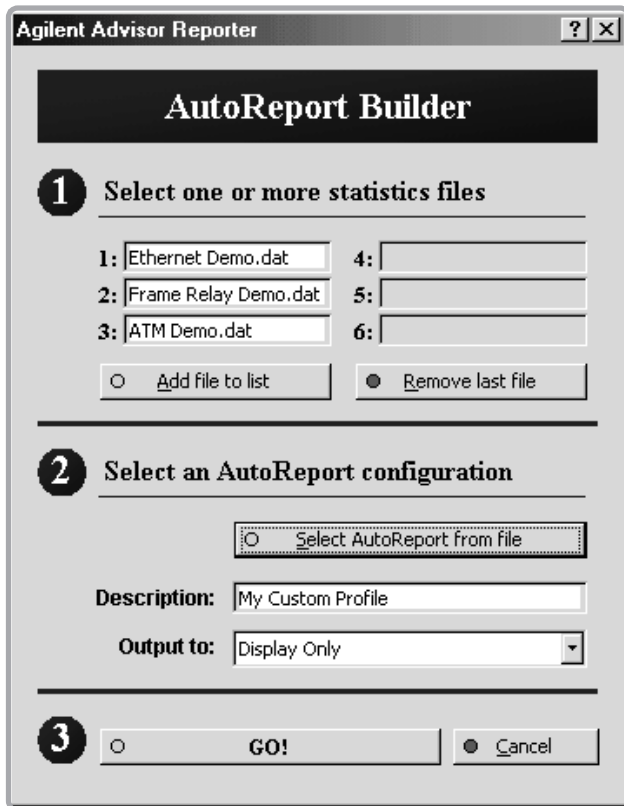
Benchmarking

- Choose the right components for a specific network environment.
- Fine-tune configuration parameters of network components for optimal performance.
- Identify upper limits of network component performance

Saves time and money

Can you afford not to have Advisor Reporter working for you?

- Advisor Reporter can help you cost justify your decisions with documentation to back you up.
- Stop saying "If I only knew what the network looked like before this problem happened".
- Advisor Reporter helps you prioritize and plan changes to the network based on a real understanding of the network's dynamics.



Agilent Advisor Reporter [?] [X]

AutoReport Builder

1 Select one or more statistics files

1: 4:

2: 5:

3: 6:

☐ Add file to list ☒ Remove last file

2 Select an AutoReport configuration

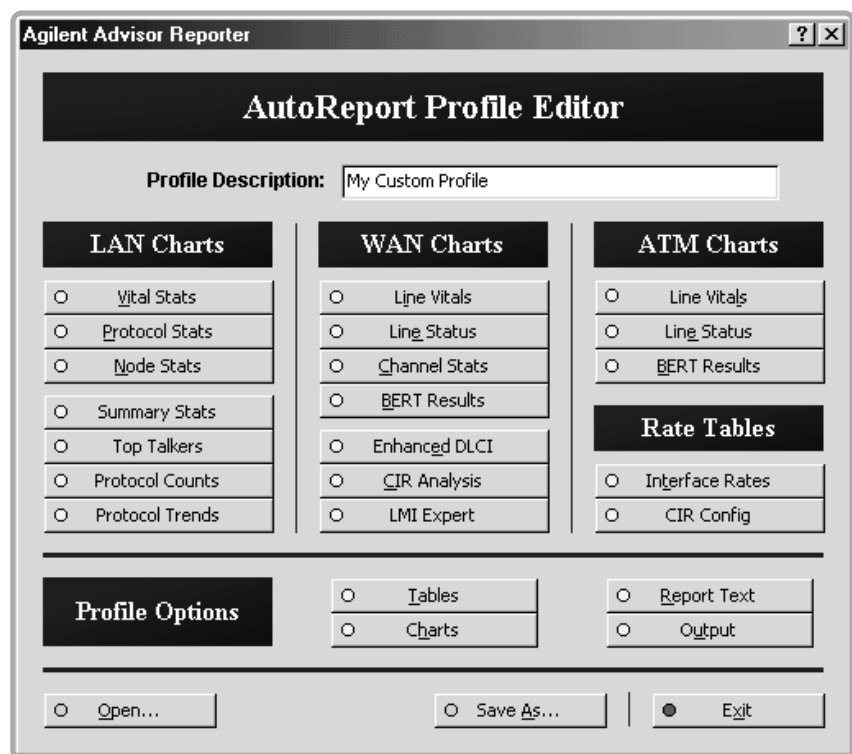
☐ Select AutoReport from file

Description:

Output to:

3 ☐ **GO!** ☒ **Cancel**

Agilent Advisor Reporter's exclusive AutoReport Builder makes reporting as simple as 1, 2, 3.



Agilent Advisor Reporter [?] [X]

AutoReport Profile Editor

Profile Description:

LAN Charts	WAN Charts	ATM Charts
<input type="radio"/> Vital Stats	<input type="radio"/> Line Vitals	<input type="radio"/> Line Vitals
<input type="radio"/> Protocol Stats	<input type="radio"/> Line Status	<input type="radio"/> Line Status
<input type="radio"/> Node Stats	<input type="radio"/> Channel Stats	<input type="radio"/> BERT Results
<input type="radio"/> Summary Stats	<input type="radio"/> BERT Results	
<input type="radio"/> Top Talkers	<input type="radio"/> Enhanced DLCI	
<input type="radio"/> Protocol Counts	<input type="radio"/> CIR Analysis	
<input type="radio"/> Protocol Trends	<input type="radio"/> LMI Expert	

Rate Tables
<input type="radio"/> Interface Rates
<input type="radio"/> CIR Config

Profile Options	
<input type="radio"/> Tables	<input type="radio"/> Report Text
<input type="radio"/> Charts	<input type="radio"/> Output

☐ Open... ☐ Save As... ☒ Exit

AutoReport Editor allows you to create and distribute custom AutoReport Profiles with point-and-click ease.

Which Agilent Advisor Measurements are Compatible with Agilent Advisor Reporter?

LAN Measurements

Supported Interfaces

Ethernet, Fast Ethernet, Token-Ring, FDDI

Supported Measurements

Protocol Vitals

Combines vital statistics for Ethernet, Token-Ring or FDDI with TCP/IP, Novell, AppleTalk, Banyan VINES, OSI and DECnet into a single measurement. Individual Protocols can be turned on/off as desired.

Line Vitals

Same as Ethernet, Token-Ring or FDDI portion of Protocol Vitals

Protocol Stats

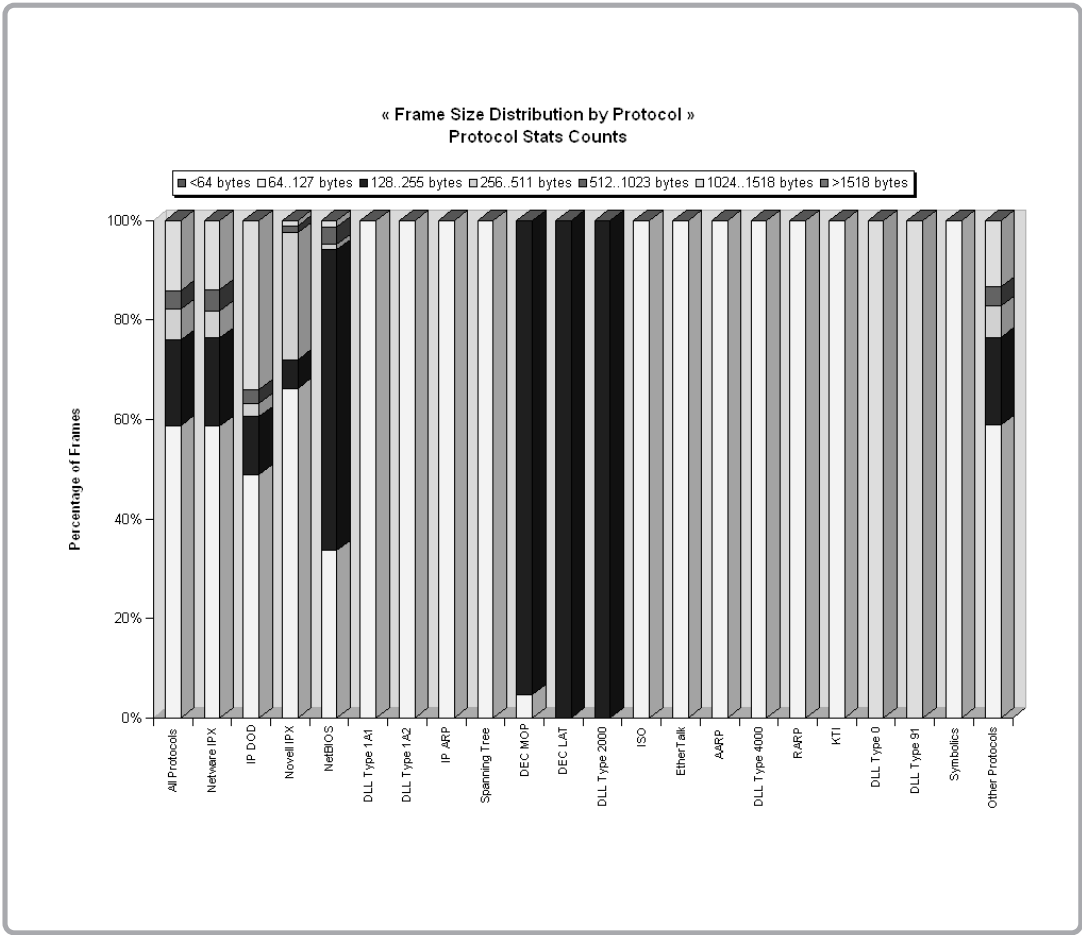
This series of measurements provides a detailed breakout of individual protocol types, with specific configurations for:

- | | |
|---|----------------------------------|
| - All protocols by DLL types and SAPs | - DECnet protocols |
| - All protocols by major protocol stack | - IP protocols and ports |
| - AppleTalk protocols | - Novell (IPX) types and sockets |
| - Banyan (VINES) protocols and ports | - OSI protocols |
| - Cisco ISL and 802.1q VLAN Ids | |

All Protocol Stats configs count frames, bytes, average frame length, and DLL Errors, as well as a complete and very useful frame length distribution matrix.

MAC Node Stats

Provides detailed statistics by MAC Node Address. A configurable software filter allows this measurement to count only non-errored frames or frames to, from or to/from a specific station address. Separate transmit (Tx) and receive (Rx) counters for frames and bytes combine with transmit counters for errors, broadcasts and multicasts (functional address frames in Token-Ring). Token-Ring configs also count source routing frames (Tx and Rx) and source route broadcasts. FDDI configs count SMT (Tx and Rx), bad fcs, ebit, length error and violation frames as well as SMT bytes.



Agilent Advisor Reporter excels at taking complex network data, like this multiple protocol frame size distribution, and presenting it in ways that are easy to interpret.

LAN Measurements

(Legacy Support for
SmallTalk Interfaces)

Supported Interfaces

Ethernet, Fast Ethernet, Token-Ring, FDDI

Supported Measurements

Summary Stats

Provides a general overview of the network, trended over time. All interface configs include basic frame and byte counts, including frame counts for up to 4 protocols and 7 stations. Other interface-specific counters include:

- Ethernet and Fast Ethernet Errors
- Token-Ring Soft Errors, Hard Errors and Source Routing counters
- FDDI Soft Errors, Hard Errors and Ring State counters

Protocol Stats

Provides a detailed breakout of individual protocol types, with many protocol-specific configuration options available. When configured for a Protocol Stacks view, all protocols can be trended over time by major protocol stack for a broad overview.

Other Protocol Stats configurations provide the most detailed breakout of protocols, ports, types, sockets, or IDs, depending on the protocol stack, but support in Internet Reporter is limited to total counts for the duration of the run. Individual Protocol Stats configurations are provided for:

- All protocols by DLL types and SAPs
- All protocols by major protocol stack
- AppleTalk protocols
- Banyan (VINES) protocols and ports
- DECnet protocols
- Cisco ISL VLAN IDs
- IP protocols and ports
- Novell (IPX) types and sockets
- OSI protocols

All Protocol Stats configs count total frames, bytes, average frame length, and DLL errors, as well as a complete and very useful frame length distribution matrix. The Protocol Stats Stack configuration also trends the frame, byte, average frame length, and DLL errors counters.

Top Talkers

Provides detailed statistics by MAC Node Address (or friendly name if configured). Separate transmit (Tx) and receive (Rx) counters for frames and bytes gives a good snapshot of the traffic on the network.

WAN Measurements

Supported Technologies

Frame Relay, X.25, HDLC, SNA-SDLC, PPP, ISDN

Supported Interfaces

V-Series, BRI S-T, BRI-V, T1, E1, E3, DS3, HSSI

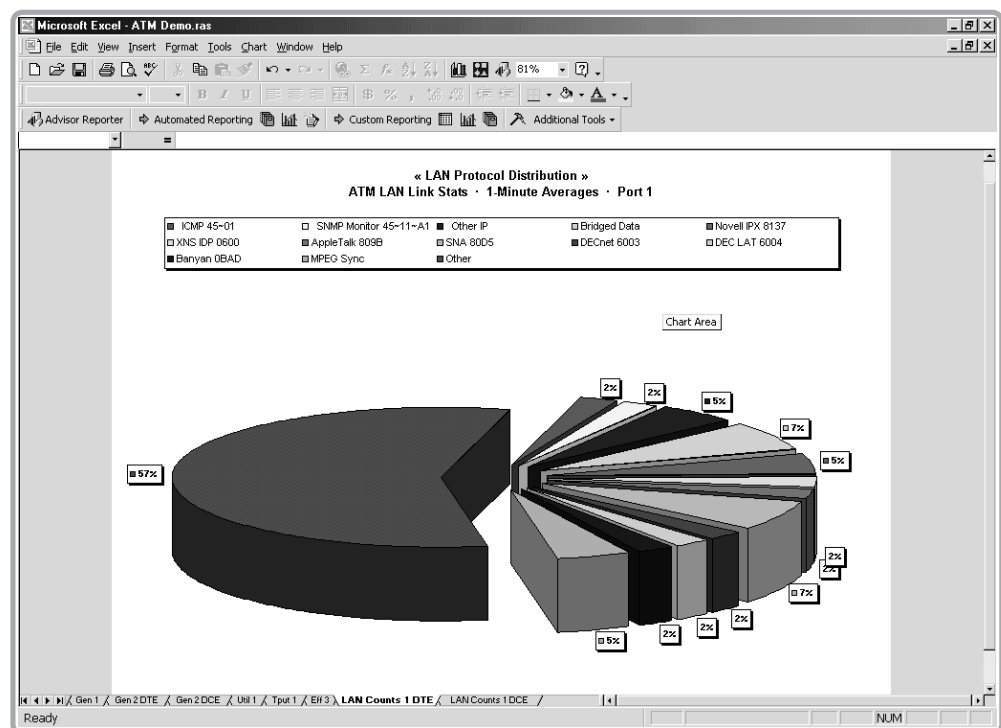
Supported Measurements

Line Vitals

This measurement combines a wide range of general statistics together. Its counters include utilization and throughput, frame efficiencies, line errors and interface-specific errors. Additionally, Line Vitals provides 16 highly configurable filters/counters which allow for the capture of network-specific types of traffic or conditions.

Line Status

This measurement provides detailed signaling statistics for T1, E1, BRI U, DS3 and E3 interfaces. BRI U configurations also include a useful EOC Report, while DS3 configurations include FEAC statistics.



Agilent Reporter keeps all related tables and charts together in a single tabbed workbook for quick analysis.

Enhanced DLCI Statistics

This new Agilent Advisor measurement allows you to track up to 1024 Frame Relay DLCI's at the same time. Advisor Reporter can automatically select the most active or you can specify those you want in your report. Counters include basic utilization and throughput as well as DE, FECN, and BECN.

You can also enter CIR values for each DLCI, providing CIR Utilization trending by DLCI. CIR values can even be stored as part of an AutoReport Profile for reuse in other reports.

CIR Analysis

The Agilent Advisor allows service providers and carriers to monitor and analyze the committed information rate of every user channel in the link and simulate controlled traffic as specified in the service contract. Advisor Reporter documents the results of this analysis so that network managers can make appropriate modifications in service levels, and increase or decrease network bandwidth to meet exact customer requirements

LMI Expert Statistics

This measurement allows you to detect network problems through monitoring of the Frame Relay signaling protocol LMI (Local Management Interface). Timers (T391, T392) and Counters (N391, N392, N393) can be tracked along with general LMI related parameters which include Sequence number errors, Single PVC Async Messages, Down PVCs, and CLLM Count.

Channel Statistics

These measurements are available for Frame Relay (DLCI) (pre-Agilent Advisor 11.4) and X.25 (LCN) technologies. Up to 30 virtual circuits can be trended, including general utilization, throughput, and line error counters.

DLCI statistics also include DE, FECN, and BECN counters for each virtual circuit. Advisor Reporter allows you to enter a CIR value for each DLCI, providing CIR Utilization trending by DLCI.

X.25 configurations can also include a complete frame size distribution.

BERT Results

The BERT Results measurement provides fast and reliable documentation of physical layer tests on T1 and E1 interfaces.

ATM Measurements

Supported Interfaces

T1, E1, E3, DS3, STM-1/OC-3c

Supported Measurements

Line Vitals

This measurement combines a wide range of general statistics together. Its counters include busy, idle, and total cells, utilization and throughput, good/errored cell efficiencies, HEC errors and interface-specific errors. Additionally, Line Vitals provides 12 highly configurable filters/counters which allow for the capture of network-specific types of traffic or conditions.

Several pre-defined filters/counters are available on the Agilent Advisor via the Start menu structure to save you the time of creating them yourself. Of these, several are recognized by Advisor Reporter as “built-in” configurations, producing additional interpreted statistics.

Line Status

This measurement provides detailed signaling statistics for all supported interfaces. DS3 configurations also include FEAC statistics.

BERT Results

The BERT Results measurement provides fast and reliable documentation of both cell-based and frame-based tests on DS3, E3, and STM-1/OC-3c interfaces.

How Can Agilent Advisor Reporter be Tailored to Fit My Needs?

Advisor Reporter provides a wide variety of extremely flexible built-in chart formats. Many charts can be customized, allowing you to chart only the data fields you want. Most importantly, Advisor Reporter’s built-in chart formats are designed to be user-friendly, preventing potential costly misinterpretation of network data.

Customizable output

Table, chart, and report output can be customized with several options. Comment lines appear as headers or footers in Excel tables and charts, and on the cover page of Word reports.

- Customizable report titles
- Automatic page scaling
- Automatic or manual chart y-axis scaling
- Rename DTE (Port 1) and DCE (Port 2) labels
- Enter and change frame relay CIR rates for each DLCI
- Plot DCE (Port 1) and DTE (Port 2) statistics together or on separate charts
- Automatic plotting of the top 5 or 10 virtual circuits

Focus-period selection

Advisor Reporter lets you view smaller subsets of data contained in log files. You do not have to sift through data that falls outside of the timeframe you wish to analyze or report on.

International Language Support

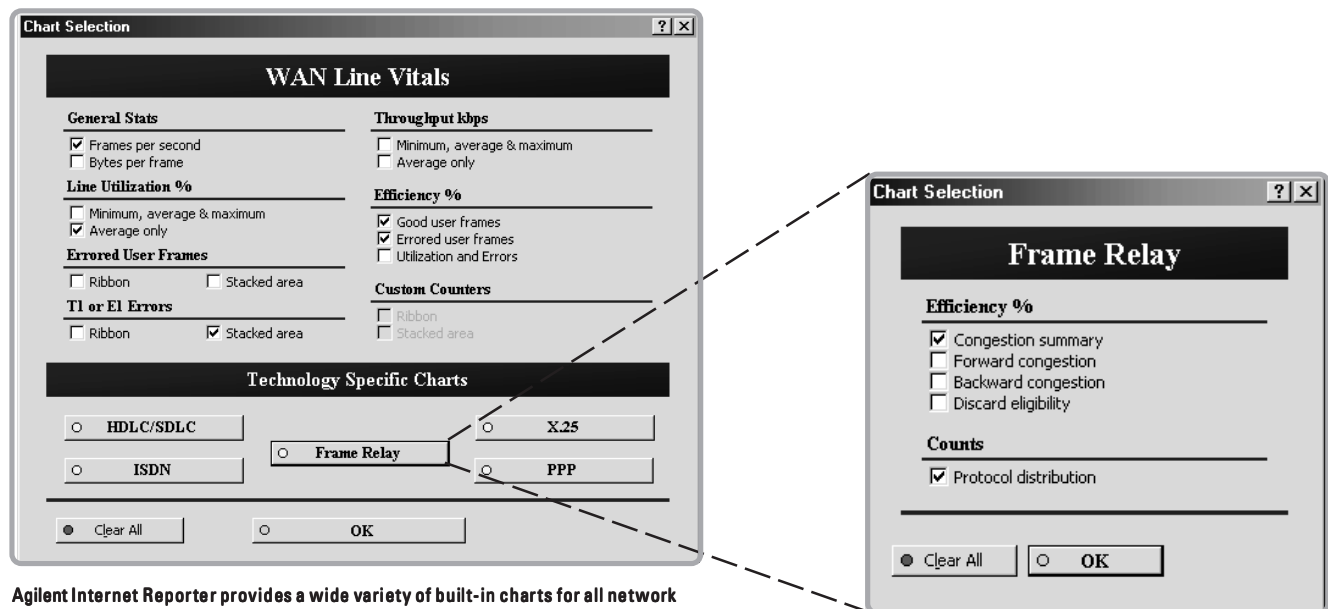
New technology in this release of Advisor Reporter allows you to choose unique languages for both the user interface and report text, making communication across global networks much simpler. Initially, just the English language packs will be available. Shortly thereafter, Spanish and Japanese will be released. Additional languages will follow after that.

Users running Windows NT or 2000 can mix any combination of languages on their system. Users of Western-language Windows 95 and 98 can mix only Western-languages on the same system.

For any language that does not have a language pack available, Advisor Reporter will still work correctly. It will just display text in one of its supported languages.

Advisor Reporter also recognizes the international settings of your Windows environment, even recognizing the default paper size for your printer (i.e. A4). The following date, time, and number format options are also presented according to your country settings:

- 3 date formats per country
- 4 time formats per country
- 4 number formats per country



Agilent Internet Reporter provides a wide variety of built-in charts for all network technologies.

Report Config - Chart Formats

Chart Formatting Options

Eqpt-Line side plotting:

NOTE: Certain charts will always plot the Eqpt and Line sides of WAN tables separately for readability, regardless the selection you make here.

Y-axis scaling:

☐ Defaults ☐ OK ☐ Cancel

Report Config - Text

Report Text

Report Title

Traffic Analysis and Network Health Report

Comments - Check and Enter

☒ Prepared for: My Client

☒ Prepared by: Agilent Engineer

☒ Comment: Intranet Backbone Base

☒ Include Prepared Date & Time

☒ Include File & Sheet Names

☒ Include in-line Glossary Definition

☐ Select All ☐ Clear All

☐ OK

Report Config - Table Formats

Table Formatting Options

Date Format:

Time Format:

Number Format:

Port 1 Stats Label:

Port 2 Stats Label:

FDDI Addr Format:

Print scaling:

☐ Defaults ☐ OK ☐ Cancel

Advisor Reporter allows you to easily customize the look and content of your finished tables, charts, and reports.

Microsoft Excel - ATM Demo.ras

File Edit View Insert Format Tools Data Window Help

Arial 8 B I U

M7

	A	B	C	D	E	F	G	H	I	J	K	L	M	N	O	P	Q	R	S	T	U	V	W	X	Y	Z	AA	AB	AC	AD	
1	General Stats												Line Utilization %		Throughput kbps		Efficiency %			Errors Per 1-Minute		DS3 Errors Per 1-Minute									
2	Port 1						Port 2						Port 1	Port 2	Port 1	Port 2	Port 1	Port 2	Port 1	Port 2	Port 1	Port 2	Port 1								
	Busy cells per second		Idle cells per second		Total cells per second		Busy cells per second		Idle cells per second		Total cells per second		ave	ave	ave	ave	Good busy cells	Errored busy cells	Good busy cells	Errored busy cells	HEC errors	HEC errors	Total DS3 errors								
3	Date	Time											Agilent AR																		
													Advisor Reporter																		
													Automated Reporting																		
													Custom Reporting																		
													Additional Tools																		
5	8-Aug-97	16:12:54	104258		104258	104262		10426					72	72	31837	31836	100	0	100	0	6	6					155804	155804			1557
6	8-Aug-97	16:13:54	104266		104266	104266		10426					52	52	22958	22959	100	0	100	0	6	6					173349	173349			1733
7	8-Aug-97	16:14:54	104266		104266	104266		10426					92	92	40703	40703	100	100													
8	8-Aug-97	16:15:54	104268		104268	104264		10426					92	92	40703	40703	100	100													
9	8-Aug-97	16:16:53	104266		104266	104266		10426					92	92	40705	40705	100	100													
10	8-Aug-97	16:17:54	104266		104266	104266		10426					92	92	40703	40703	100	100													
11	8-Aug-97	16:18:54	104267		104267	104271		10427					92	92	40711	40711	100	100													
12	8-Aug-97	16:19:53	104272		104272	104268		10426					11	44210	100	100															
13	8-Aug-97	16:20:54	75087	821	75908	75085	821	75907	72	72	31837	31836	100	0	100	0	6	6								155804	155804			1557	
14	8-Aug-97	16:21:53	54147	4663	58811	54149	4664	58812	52	52	22958	22959	100	0	100	0	6	6								173349	173349			1733	
15	8-Aug-97	16:22:54	95998	8268	104266	95998	8268	104266	92	92	40703	40703	100	100																	
16	8-Aug-97	16:23:54	95998	8268	104266	95998	8268	104266	92	92	40703	40703	100	100																	
17	8-Aug-97	16:24:54	96003	8268	104271	96003	8268	104271	92	92	40705	40705	100	100																	
18	8-Aug-97	16:25:54	95994	8268	104261	95994	8268	104261	92	92	40701	40701	100	100																	
19	8-Aug-97	16:26:54	95998	8268	104266	95998	8268	104266	92	92	40703	40703	100	100																	
20	8-Aug-97	16:27:54	95998	8268	104266	95998	8268	104266	92	92	40703	40703	100	100																	
21	8-Aug-97	16:28:53	95999	8268	104267	95999	8268	104267	92	92	40704	40704	100	100																	
22	8-Aug-97	16:29:54	95998	8268	104265	95997	8268	104265	92	92	40703	40703	100	100																	
23	8-Aug-97	16:30:53	96002	8268	104270	96002	8268	104270	92	92	40705	40705	100	100																	
24	8-Aug-97	16:31:54	96001	8268	104270	96001	8268	104270	92	92	40705	40705	100	100																	
25	8-Aug-97	16:32:53	95992	8267	104259	95992	8267	104259	92	92	40700	40700	100	100																	

ATM LAN Link Stats Gen1 Gen2 DTE Gen2 DCE Unit1 Tport1 ERF3 LAN Counts DTE LAN Cou1

Ready

NUM

Advisor Reporter is integrated into Microsoft® Office, with all features conveniently accessible via a docked or floating toolbar.

System Requirements

Data Collection

- **WAN**
 - Agilent Advisor 10.0 minimum (11.4 + for Frame Relay Enhanced DLCI, CIR Analysis, LMI Expert)
- **ATM**
 - Agilent Advisor 9.5 minimum
- **LAN**
 - Agilent Advisor 10.0 minimum (11.3 + for Token-Ring and FDDI)
- **LAN (Legacy support for SmallTalk interface)**
 - Agilent Advisor for LAN system software revision A.07.00 minimum (A.08.00 for FDDI Top Talkers)

Data Analysis

- Intel Pentium™-class CPU or greater recommended
- Microsoft Windows® 95, 98, 2000, or NT 4.0 SR3+
- Microsoft® Office 2000 for Windows®
 - Excel and Word components must be installed
 - Most Western and Far East versions are supported (i.e. French, Spanish, German, Italian, Japanese etc.)
- Windows®-supported output device (Color printer highly recommended)
- 3.5" 1.44MB compatible diskette drive
- 6MB free disk space required for Advisor Reporter
- Up to 100MB+ free disk space required for Microsoft Office 2000
- 100MB free disk space minimum recommended for work files
- Internet connection for downloading software updates

Warranty

For software - warranty 90 day replacement only

*Microsoft Windows® is a U.S. registered trademark of Microsoft Corp.
Windows® is a U.S. trademark of Microsoft Corporation
Pentium™ is a U.S. trademark of Intel Corporation*

Contact us with FaxBack

By Returning This FaxBack Page,
with the following required
information, you can facilitate your
initial contact to speak with a
Customer Care Representative

Fax to: 1-303-662-2038

OR...

E-mail to: csp_tesales@agilent.com

Visit our web site

www.agilent.com/comms/onenetworks

First Name _____
Last Name _____
Company Name _____
Job Title _____

Business Mailing Address _____

City _____

State/Province _____

Country _____

Zip Code _____

E-Mail Address _____

Phone Number _____
(incl. area/country code)

Fax Number _____

Do you have a budget set for this application?

- ☐ Yes
☐ No
☐ In process

What is your time frame to implement this product?

- ☐ 30 days ☐ 180 days
☐ 90 days ☐ Other – (please define) _____

Product(s) of Interest

- ☐ **The Agilent Advisor** – Integrated, High-Performance Troubleshooting for:
_____ Advisor LAN
_____ Advisor WAN
_____ Advisor ATM
- ☐ **The LAN Analyzer** – Scaleable Ethernet and Token Ring Test Solutions
- ☐ **Telegra Fax Test** – Fax Protocol and Low Generation Analysis
- ☐ **Telegra Voice Quality Tester** – Detailed Voice Analysis for Clarity, Echo and Delay using PSQM and PAMS
- ☐ **Telegra Voice and Fax over IP** – Protocol Analysis
- ☐ **FASTest** – Automated Service Verification for PSTN and IP Networks

**What is the main problem you
need to solve on your network?**



Agilent Technologies
Innovating the HP Way

Connect with us!
<http://www.agilent.com/comms/onenetworks>

This Product is Y2K Compliant

Agilent Ordering Information

J1966A Advisor Reporter LAN version 11.5
J3307A Advisor Reporter LAN/WAN/ATM version 11.5

By internet, phone or fax, get assistance with all your Test and Measurement needs.

Online assistance:

<http://www.agilent.com/find/assist>

United States:

(Tel) 1 800 452 4844

Canada:

(Tel) 1 877 894 4414

(Fax) (905) 206 4120

Europe:

(Tel) (31 20) 547 2323

(Fax) (31 20) 547 2390

Japan:

(Tel) (81) 426 56 7832

(Fax) (81) 426 56 7840

Latin America:

(Tel) (305) 269 7500

(Fax) (305) 269 7599

Australia:

(Tel) 1-800 629 485

(Fax) (61 3) 9272 0749

New Zealand:

(Tel) 0 800 738 378

(Fax) (64 4) 495 8950

Asia Pacific:

(Tel) (852) 3197 7777

(Fax) (852) 2506 9284

Product specifications and descriptions in this document subject to change without notice.

Copyright© Agilent Technologies, 2000

Printed in U.S.A. 09/00



5968-6188E



Agilent Technologies

Innovating the HP Way