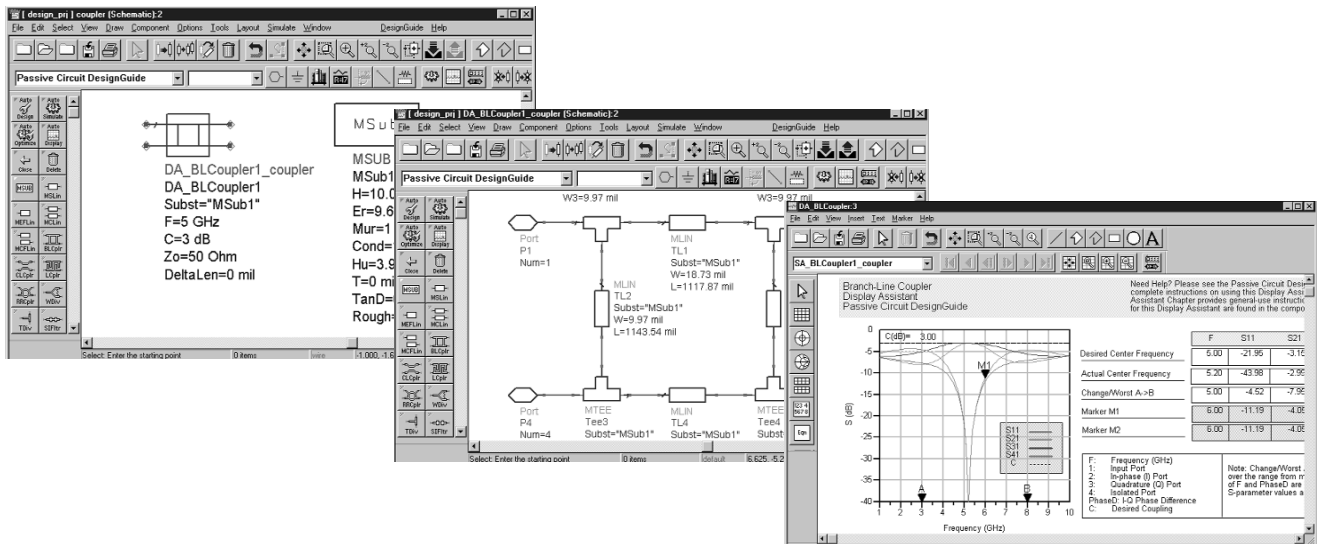


Agilent E5610A/AN Agilent EEsof EDA Passive Circuit Design Guide Product Overview



Features At A Glance

**Schematics synthesized with correct layout
Over 30 parameterized components**

- Couplers
- Power dividers
- Filters
- Matching networks
- Reactive elements

Automation

- Design and simulation assistants
- Optimization assistant
- Data display of specifications

Design of passive microwave circuits has never been easier with the Passive Circuit DesignGuide, one of a family of DesignGuides from the Agilent EEsof EDA product group.

The Passive Circuit DesignGuide provides you with synthesis and analysis of commonly used microstrip circuits familiar to microwave designers, such as branch-line couplers, Wilkinson dividers, coupled-line filters, quarter-wave matching networks, and lumped-element matching networks. Microwave circuits that previously took significant design time are now synthesized in seconds.

Just as with any component in Advanced Design System, you can place DesignGuide components into a schematic from a palette or menu. A pop-up dialog box lets you set the component specifications using convenient and familiar parameters. And because these schematics represent physical geometries, the schematics were carefully designed to synchronize a correct layout.

Automation is an integral part of the Passive Circuit DesignGuide. The design flow starts with placement of a component in the schematic, and entering its specifications. The auto-design feature performs quick and easy circuit synthesis, and the auto-simulate feature sets up, simulates, and displays the results. The data display is specific to the component you are designing, and shows the main performance specifications.



Agilent Technologies
Innovating the HP Way

System Requirements

- Advanced Design System 1.3 or later version
- E8900A/AN Design Environment
- E8901A/AN Data Display
- E8881A/AN Linear Simulator License
- E8902A/AN Layout License (optional)

Microstrip Lines

- Open Circuit
- Short Circuit
- Tapered
- Step
- Gap
- Tee
- Cross
- Bends
- Corner
- Curve
- Line
- Coupled Line
- Open End Effect
- Coupled Filter Line
- Interdigital Capacitors
- Thin-Film Capacitor
- Thin-Film Capacitor
- Thin-Film Resistor
- Round Spiral Inductor
- Rectangular Spiral Inductor
- Rectangular Spiral Inductor No Bridge
- Rectangular Spiral Inductor Wire Bridge

Couplers

- Branch-Line
- Coupled-Line
- Lange
- Rat-Race

Dividers

- Wilkinson
- Tee

Filters

- Step Impedance
- Stub Lowpass
- Stub Bandpass
- Coupled Line
- Zig-Zag

Match

- Lumped 2-Element
- Single-Stub
- Double-Stub
- Quarter Wave
- Tapered Line

Agilent Technologies' Test and Measurement Support, Services, and Assistance

Agilent Technologies aims to maximize the value you receive, while minimizing your risk and problems. We strive to ensure that you get the test and measurement capabilities you paid for and obtain the support you need. Our extensive support resources and services can help you choose the right Agilent products for your applications and apply them successfully. Every instrument and system we sell has a global warranty. Support is available for at least five years beyond the production life of the product. Two concepts underlie Agilent's overall support policy: "Our Promise" and "Your Advantage."

Our Promise

"Our Promise" means your Agilent test and measurement equipment will meet its advertised performance and functionality. When you are choosing new equipment, we will help you with product information, including realistic performance specifications and practical recommendations from experienced test engineers. When you use Agilent equipment, we can verify that it works properly, help with product operation, and provide basic measurement assistance for the use of specified capabilities, at no extra cost upon request. Many self-help tools are available.

Your Advantage

"Your Advantage" means that Agilent offers a wide range of additional expert test and measurement services, which you can purchase according to your unique technical and business needs. Solve problems efficiently and gain a competitive edge by contracting with us for calibration, extra-cost upgrades, out-of-warranty repairs, and on-site education and training, as well as design, system integration, project management, and other professional services. Experienced Agilent engineers and technicians worldwide can help you maximize your productivity, optimize the return on investment of your Agilent instruments and systems, and obtain dependable measurement accuracy for the life of those products.

Get assistance with all your test and measurement needs at:
www.agilent.com/find/assist

Product specifications and descriptions in this document subject to change without notice.

Copyright © 1999, 2000 Agilent Technologies
Printed in U.S.A. 7/00
5968-8389E



Agilent Technologies

Innovating the HP Way