



## A-C Series Circuits

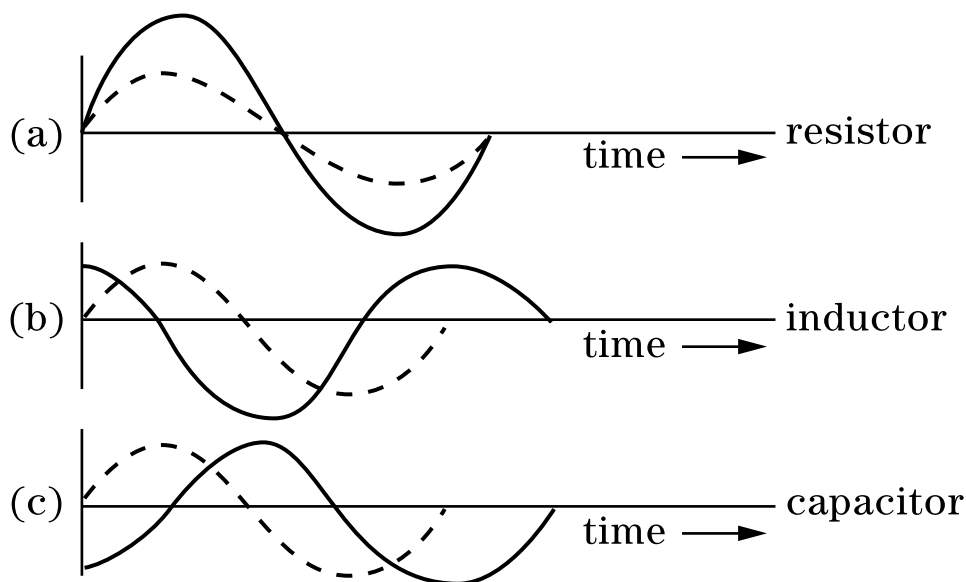
**By:** Robert T. Curry  
Department of Physics  
University of Kansas  
Lawrence, KS

### Purpose:

In any series circuit all elements carry the same current, and the circuit voltage is the sum of the individual voltage drops. In an a-c series circuit containing resistance, inductance, and capacitance (RLC) the individual voltage drops are given by  $V = IR$  for a resistor,  $V = I(\text{angular frequency})L$  for an inductor, and  $V = I/(\text{angular frequency})C$  for a capacitor. (angular frequency =  $2\pi f = 2\pi/T$ ). The complicating factor in a-c circuits is phase. Only in an ideal resistor is the voltage drop in phase with the current as in Fig. 1a.

### Equipment Required:

- HP 54600 - Series Oscilloscope
- HP 33120A - Function/Arb Generator



**Fig. 1.** Solid curves represent voltage, dotted curves represent current.

In the case of an ideal inductor the voltage leads the current by 90 degrees as in Fig. 1b. That is, the sine wave representing voltage drop across the inductor reaches its peak (or trough or ascending or descending node) one-fourth of a cycle earlier on the time axis than does the wave representing the current. In the case of an ideal capacitor, the voltage drop lags the current by 90 degrees.

These rules can be remembered from the mnemonic “ELI the ICE man,” where E represents voltage drop and I represents current.



If the three voltages of Fig. 1 were added either pointwise or analytically to get the circuit voltage, another sinusoidal voltage would be obtained which would have some phase shift  $\phi$  with respect to the current. In general, this phase shift would be neither 0 degrees nor  $\pm 90$  degrees, but would depend on the amplitudes of the three voltages.

A phasor diagram is constructed by regarding the instantaneous voltage drops to be the y-components of rotating "vectors." Fig. 2 shows a phasor diagram which would generate the voltage phases of Figure 1 if allowed to rotate counterclockwise.

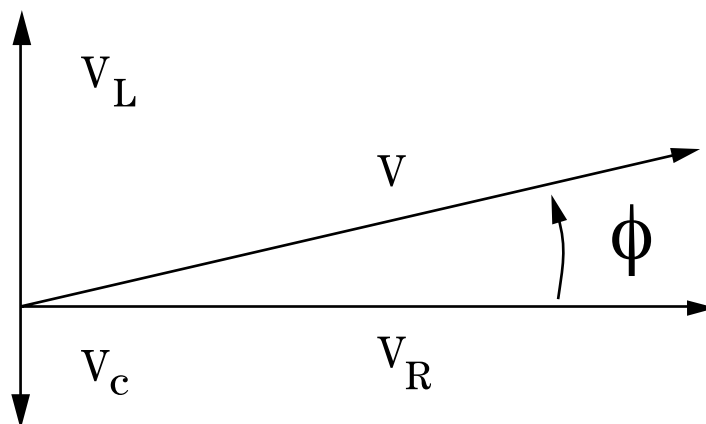


Fig. 2

The circuit voltage  $V$  and its phase angle  $\phi$  are found by "vector" addition of the phasors representing  $V_R$ ,  $V_L$  and  $V_C$ .

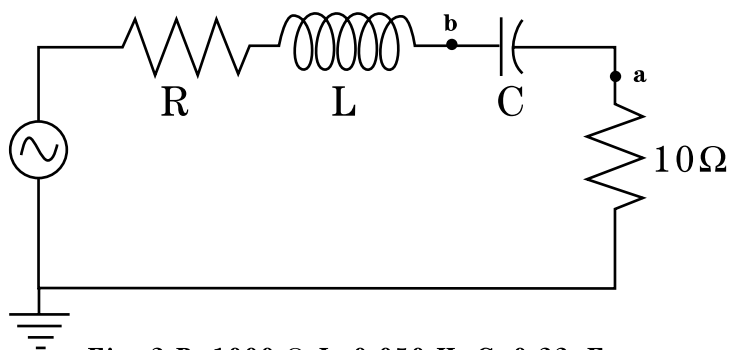
**Procedure:**

**R – L – C Series Circuit**

1. Hook up the circuit of Fig. 3. Connect the Ch 2 input of the oscilloscope to point *a* to monitor the voltage across the 10 ohm resistor. This is important because it has the same phase as the current. Use a frequency generator output of 1 kHz (*i.e.* a period of 1 ms on the oscilloscope graticule.)
2. Connect the Ch 1 input of the oscilloscope to point *b* to measure the amplitude of the voltage drop across the  $0.22\mu\text{F}$  capacitor. (The 10 ohm resistor voltage is negligible in comparison.) Measure also the phase of  $V_C$  with respect to  $I$ . Call this  $\phi_C$ .
3. Interchange  $C$  and the 50 mH inductor in the circuit and repeat step 2 for  $V_L$  and  $\phi_L$ . Note: real inductors have significant series resistance of their own, so you may find  $\phi_L$  is noticeably less than 90 degrees.
4. Interchange  $L$  and the 1K ohm resistor and measure  $V_R$  and  $\phi_R$ .
5. Connect the Ch 1 input directly to the output of the function generator and measure the circuit voltage  $V$  and phase angle  $\phi$ .



96 E19-3

Fig. 3  $R=1000\ \Omega$ ,  $L=0.050\ \text{H}$ ,  $C=0.22\ \mu\text{F}$ .

6. Construct to scale on graph paper a phasor diagram showing  $V_L$ ,  $V_C$ ,  $V_R$  and their “vector” sum  $V$ . On the same diagram show the measured value of  $V$ . Do your results agree within reasonable limits?

If time permits, repeat the experiment after resetting the frequency of the function generator to 2 kHz (*i.e.* 0.5 ms period.)

**Series Resonance:**

Of particular interest is the case where  $\phi = 0$ . With the apparatus in the configuration of step 5, adjust the frequency until the circuit voltage is in phase with the current. Compare this resonant frequency with that predicted from.

$$f_{res} = \frac{1}{2\pi\sqrt{LC}}$$

