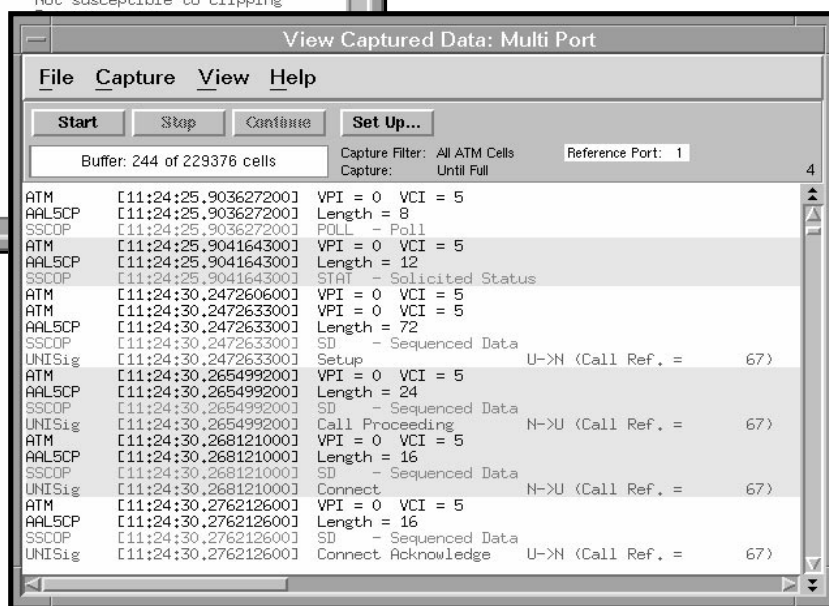
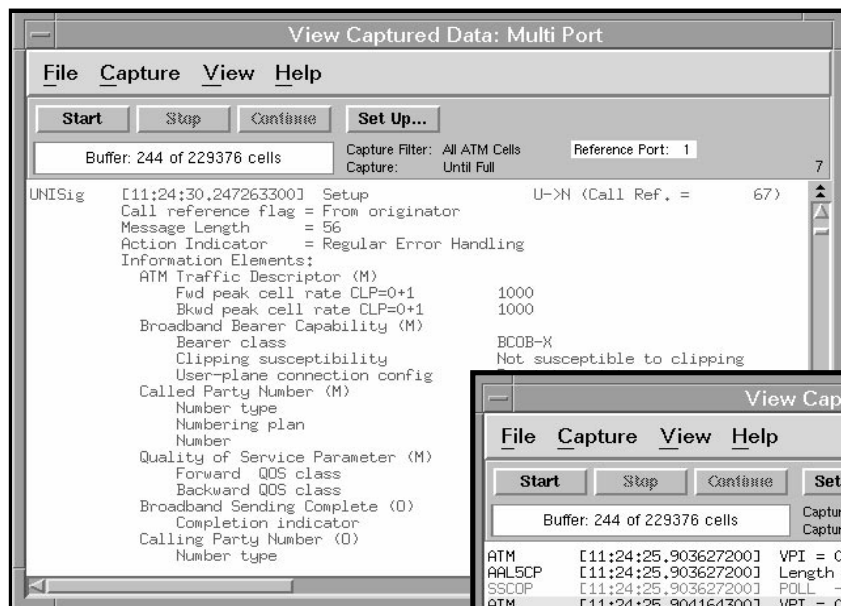


Signaling Decodes Analysis

HP E5200A Broadband Service Analyzer

**New
Decodes**



Key features:

- Full signaling protocol support
 - Layer 3 signaling-ATM Forum UNI 3.0, UNI 3.1 and ITU-T Q.2931
 - Layer 2 (SSCOP)-Q.SAAL1, Q.2110
 - SSCF-Q.SAAL2, Q.2130
- Single port view or merged (interleaved) view across both ports
- Detection and highlighting of protocol and network errors
- Online help



HP E5200A Broadband Service Analyzer

Signaling Decodes Analysis

The list of decodes available on the HP E5200A Broadband Service Analyzer has expanded to include ATM signaling decodes. These decodes build on the service analyzer's existing suite of protocol decodes and use the existing data capture system to capture the essential information needed to analyze your Switched Virtual Circuits (SVCs).

Protocol decodes of captured signaling traffic at the SSCOP (layer 2), and UNI (layer 3) signaling levels are supported. Captured information can be viewed using the service analyzer's new interleaved capture viewer, which provides analysis for both upstream and downstream traffic. Viewing of reassembled Protocol Data Units (PDUs) is in accordance with the following

Protocol	Decode View
UNI (layer 3) signaling	Brief, partial, full
SSCOP (layer 2)	Brief, partial

Brief	Displays a one line description.
Partial	Displays a one line description with subsequent lines displaying message length, action indicator and list of information elements.
Full	Display presented as for partial view with full content of information elements displayed.

Any detected errors are highlighted (color coded) so that they are immediately visible to you during the post capture analysis. They include the detection of

- SAAL errors
- invalid Layer 2 PDUs
- invalid Layer 3 message formats
- unrecognized or errored message information elements
- message length errors
- missing mandatory information elements

All help functions have been integrated with the HP Broadband Service Analyzer's extensive online help system. Also included in the online help is a complete listing of supported Layer 3 messages and information elements, and Layer 2 PDU types and parameters.

HP E5200A Broadband Service Analyzer

The HP E5200A Broadband Service Analyzer gives you complete network analysis control—much more than ordinary test technology. The HP Broadband Service Analyzer allows you to manage the end-to-end quality of your service. The service analyzer shows the important interactions between the elements of the service, instantly notifying you of abnormal network conditions. The HP Broadband Service Analyzer is designed to meet your many test needs. It leads the way in a new class of portable test instruments specifically designed for dispatched, remote, and distributed applications.

System Requirements

The Data Services Analysis features are available as **standard** on the HP E5200A Broadband Service Analyzer.

Simply make sure you have the following system configuration

- HP E5200A Broadband Service Analyzer
- E5200A opt 002 (Release 1.5 or later)
- X-server display or Unix workstation

HP Sales and Support Offices

For more information, call your local HP sales office listed in your telephone directory or an HP regional office listed below for the location of your nearest sales office.

United States:

Hewlett-Packard Company
Test and Measurement Organization
5301 Stevens Creek Boulevard Building
51L-SC Santa Clara, CA 95052-8059
1-800-452 4844

Canada:

Hewlett-Packard Canada Ltd.
5150 Spectrum Way
Mississauga, Ontario
L4W5G1
(905) 206-4725

Europe:

Hewlett-Packard
European Marketing Centre
P.O. Box 999
1180 AZ Amstelveen
The Netherlands
(020) 547-6222

Japan:

Hewlett-Packard Japan Ltd.
Measurement Assistance Centre
9-1, Takakura-Cho, Hachioji-Shi
Tokyo 192, Japan
(81) 426-48-3860

Latin America:

Hewlett-Packard
Latin American Region Headquarters
5200 Blue Lagoon Drive
9th Floor
Miami, Florida 33126
U.S.A.
(305) 267-4245/4220

Australia/New Zealand

Hewlett-Packard Australia Ltd.
31-41 Joseph Street
Blackburn, Victoria 3130
Australia
Melbourne Caller 9272-2555
(008) 13 1347

Asia Pacific:

Hewlett-Packard Asia Pacific Ltd.
17-21/F Shell Tower, Times Square,
1 Matheson Street, Causeway Bay,
Hong Kong
(852) 2599-7070

Data subject to change
Printed in U.S.A. 10/96
5965-5260E

© Copyright Hewlett-Packard
Company 1996