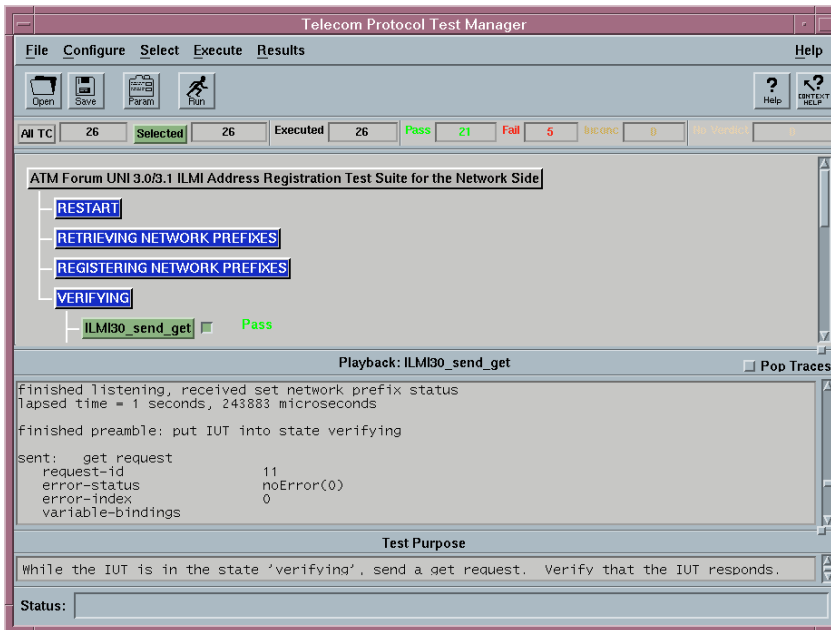


ATM Forum UNI 3.0/3.1 ILMI Address Registration ETS for User & Net Side

For the HP Broadband Series Test System

E7842A/E7843A



ATM Forum UNI 3.0/3.1 Address Registration Test Suite for the Network side: test suite browser and trace window

Product Features

- Fully automated test suites to help NEMs easily verify conformance to ATM Forum ILMI Address Registration procedures
- ATM Forum UNI 3.0/3.1 ILMI Address Registration Test Suite for the User or Network Side tests address registration procedures that precede call setup and other signalling procedures on ATM terminal equipment or ATM intermediate systems
- ILMI test tool included
- Simple scripting facility included

The HP E7842A and E7843A test suites verify conformance to the ATM Forum UNI 3.0/3.1 Interim Local Management Interface (ILMI) Address Registration procedures, that is, the ILMI procedures for exchanging address information, which are essential in an SVC environment.

The ILMI protocol allows the user and network to exchange management information across the UNI. By exchanging ILMI messages, each side of the UNI can gather information on its peer.

Using ILMI, the network can pass the network prefix in use at the switch (the first part of an ATM address) to the user. In turn, the user can pass the terminal portion of the ATM address to the network.

The test suites can be used at all phases of the product life cycle, by R&D engineers in the early stages of development to QA engineers (by selecting all applicable test cases); as well as for automatic regression testing. They can help NEMs and network operators to quickly and accurately verify the conformance of their products and implementations, or equipment

being evaluated for use in a network, prior to market introduction.

NEMs need to perform exhaustive, automated testing of signalling implementations, with a recognized set of tests.

The HP E7842A and E7843A automated test suites have been submitted to the ATM Forum for approval, ensuring even greater acceptance of test results.

They complement the comprehensive family of available BSTS ATM signalling applications and conformance test suites.

Key Features:

An ILMI test tool is provided to complement the test suite. The test tool decodes incoming ILMI messages and sends ILMI messages on operator command.

There is also a simple scripting facility included.

Software Benefits

Hewlett-Packard's Telecom Protocol Test Manager user interface for conformance testing offers the following benefits:

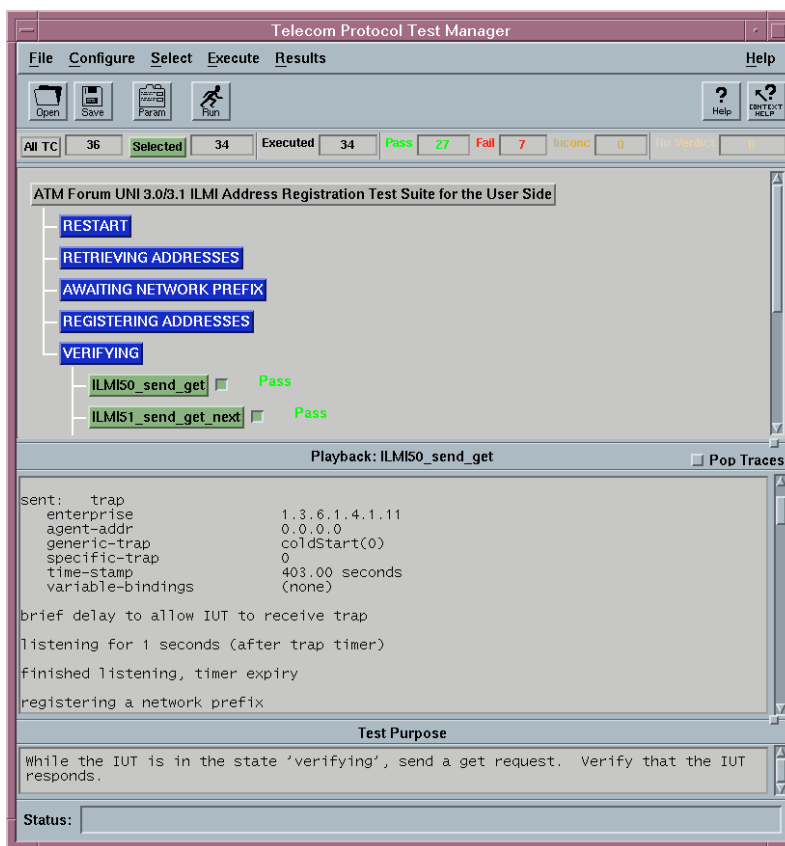
- Fully automated stimulus-and-response testing simplifies the verification process of ATM products at all phases of R&D. A complete, automated suite of tests in a single package can help reduce design cycle costs by producing results more quickly and with less operator intervention.
- Flexible test case selection translates into either exhaustive testing or tailoring test case selection to suit the specific functions under test.
- Clear verdict assignments for each test case run (such as PASS or FAIL) can help solve implementation errors.
- Diagnostic information in test case traces can help pinpoint errors.
- Flexible data recording and playback capabilities built-in to the interface's trace window simplify the review of frames and cells transmitted. The operator can either pop traces to a separate window or keep track of overall results by generating variable-detail test

campaign summary reports. The full exchange of messages produced by the test cases is recorded for later analysis.

- Test repeatability is achieved by saving test session setups and results. This allows quick regression testing of product enhancements or bug fixes.
- Test campaigns are easily configured via interactive True/False or value setting questions

for most PICS, PIXIT and other types of statements.

- Selecting test cases based on previously assigned verdicts helps concentrate on problem areas.
- The test suite follows an internationally recognized protocol testing standard methodology as defined in ISO 9646.



ATM Forum UNI 3.0/3.1 Address Registration Test Suite for the User side: test suite browser and trace window.

Applicable Standards

ATM Forum ATM User-Network Interface Specification, versions 3.0 and 3.1

Abstract Test Suite (ATS)

The ATS is written in English with Message Sequence Charts (MSC) (not in TTCN).

ATSs are in the process of being approved by the ATM Forum. ATS descriptions were presented at the 96/12 ATM Forum meeting. The document numbers of those contributions are:

For the User Side: 96-1607

For the Network Side: 96-1606

Areas Tested - User Side

Test Case Group Name	Test Cases
Restart	1
Retrieving Addresses	10
Awaiting Network Prefix	12
Registering Addresses	4
Verifying	9
Total	36

Areas Tested - Network Side

Test Case Group Name	Test Cases
Restart	1
Retrieving Network Prefixes	8
Registering Network Prefixes	5
Verifying	12
Total	26

Configuration & Use With BSTS Line Interfaces, Hardware Modules & Test Software

The E7842A/E7843A ATM Forum UNI 3.0/3.1 ILMI Address Registration Test Suite for the User or Network Side requires a minimum configuration of the Broadband Series Test System consisting of a Model A or B chassis, one Cell Protocol Processor, and one compatible ATM cell-based line interface.

The BSTS must be running the following software: Base System V3.02 or higher.

Warranty & Support Options

HP Broadband Series Test System software and firmware products are supplied on transportable media such as disk, CD-ROM or integrated circuits. The warranty covers physical defects in the media, and defective media is replaced at no charge during the warranty period. When installed in an HP Broadband Series Test System, the software/firmware media has the same warranty period as the product. This test software has no components requiring calibration.

Product Numbers

- **E7842A** ATM Forum UNI 3.0/3.1 ILMI Address Registration Test Suite for the User Side
- **E7843A** ATM Forum UNI 3.0/3.1 ILMI Address Registration Test Suite for the Network Side
Option #101 Bundle credit when purchased at same time as E7842A (ILMI User Side)
- **E7844A** ATM Forum UNI 4.0 Core Signalling Conformance Test Suite for the Network Side
- **E7845A** ATM Forum UNI 4.0 Core Signalling Conformance Test Suite for the User Side
- **E7823A, E7833A/C, E7834A**, ATM Forum UNI 3.0/3.1 Signalling Conformance Test Suites for network or terminal equipment
- **E4214A, E4214B, E4217B, E6280A, E6273B** UNI and NNI Signalling Test Software and ILMI Emulation Software

Software Package Contents

- ETS (on CD-ROM)
- ETS User's Guide
- ATS Manual
- Release Notice
- Test Manager GUI (on CD-ROM)
- Test Manager User's Guide
- Test Manager Release Notice
- Hardware key



E4200/E4210 Broadband Series Test System (BSTS)

The E4200/E4210 Broadband Series Test System (BSTS) is the industry-standard ATM/BISDN test system for R&D engineering, product development, field trials and QA testing. It offers:

- The widest variety of standard interfaces
- The broadest, most powerful range of signalling capabilities
- Complete, automated conformance testing
- Time-saving features for monitoring, emulation, simulation, load generation, performance and automated testing.

The HP BSTS is modular, so it can grow with your testing needs. And, because we build all the BSTS products without shortcuts according to full specifications, you'll catch problems other test equipment may not detect.

UNIX® is a registered trademark in the United States and other countries, licensed exclusively through X/Open Company Limited.

Specifications subject to change.

5965-9962E 08/97

For more information

For an introduction to the modular Broadband Series Test System, please request the *BSTS Product Information & Technical Specifications*, HP publication 5966-0035E or visit the BSTS web pages at

<http://www.hp.com/go/bsts>

The *BSTS Ordering Guide*, HP publication 5964-0393E, helps you determine the appropriate system configuration for your testing needs. Technical specifications detailing other dedicated test modules and test software packages for the BSTS are also available.

How to Find Out About Other HP Products, Publications & Services

For more information about Hewlett-Packard test & measurement products, applications, services, and for a current sales office listing, visit our web site,

<http://www.hp.com/go/tmdir>.

You can also contact one of the following centers and ask for a test and measurement sales representative.

United States:

Hewlett-Packard Company
Test and Measurement Call Center
P.O. Box 4026
Englewood, CO 80155-4026
1-800-452-4844

Canada:

Hewlett-Packard Canada Ltd.
5150 Spectrum Way
Mississauga, Ontario
L4W 5G1
(905) 206-4725

Europe:

Hewlett-Packard
European Marketing Centre
P.O. Box 999
1180 AZ Amstelveen
The Netherlands
(31 20) 547-9900

Japan:

Hewlett-Packard Japan Ltd.
Measurement Assistance Center
9-1, Takakura-Cho, Hachioji-Shi,
Tokyo 192, Japan
Tel: (81) 426-56-7832
Fax: (81) 426-56-7840

Latin America:

Hewlett-Packard
Latin American Region Headquarters
5200 Blue Lagoon Drive
9th Floor
Miami, Florida 33126
U.S.A.
Tel: (305) 267-4245
(305) 267-4220
Fax: (305) 267-4288

Australia/New Zealand:

Hewlett-Packard Australia Ltd.
31-41 Joseph Street
Blackburn, Victoria 3130
Australia
1-800-629-485

Asia Pacific:

Hewlett-Packard Asia Pacific Ltd.
17-21/F Shell Tower, Times Square,
1 Matheson Street, Causeway Bay,
Hong Kong
Tel: (852) 2599-7777
Fax: (852) 2506-9285



www.hp.com/go/bsts