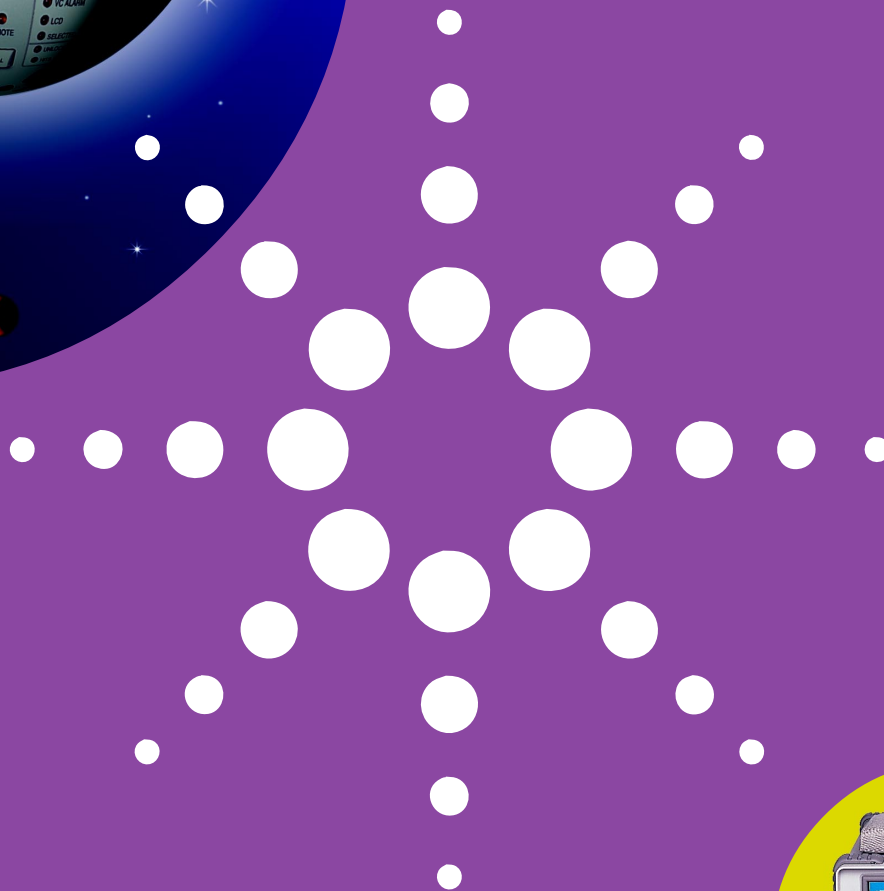




The big value  
transmission tester  
from 2.5 Gb/s to 52 Mb/s



**OmniBER 720**



**Agilent Technologies**

Innovating the HP Way

If you want your test equipment budget to stretch further, take a look at the new, low-cost OmniBER 720 communications performance analyzer. It's packed with all the essential measurements needed for routine testing of optical tributaries to OC-48/STM-16o. Plus, it shares the same user interface that's common to all OmniBER analyzers for fast, intuitive operation.

For installation, commissioning, maintenance and system verification of high-speed SONET, SDH and DWDM transmission systems, the big value OmniBER 720 has just the performance you need. At a price you can afford.

- OC-48, OC-12, OC-3, OC-1 and/or STM-16o/4o/1o/0o on a single optical interface
- Bulk payloads from STS-48c/STM-16c to VT 1.5/TU-11
- Auto-discovery of all received payload channels
- Error and alarm generation/analysis
- Alarm scan
- Full overhead setup and monitoring including text decode of:
  - sync status (S1)
  - APS messages (K1K2)
  - signal labels (C2, V5)

- J0 section trace for DWDM test
- J1 and J2 path trace for network path testing
- Optical power and line frequency measurements
- Line frequency offset
- Pointer adjustments to Bellcore GR-253/ITU-T G.783
- Thru-mode testing for SONET/SDH ring turn-up
- Optional integrated graphical printer
- Dual standard option available (SONET and SDH)

## stretch your purchasing power

### SMART TEST

### SmartTest—your gateway to fast, easy testing

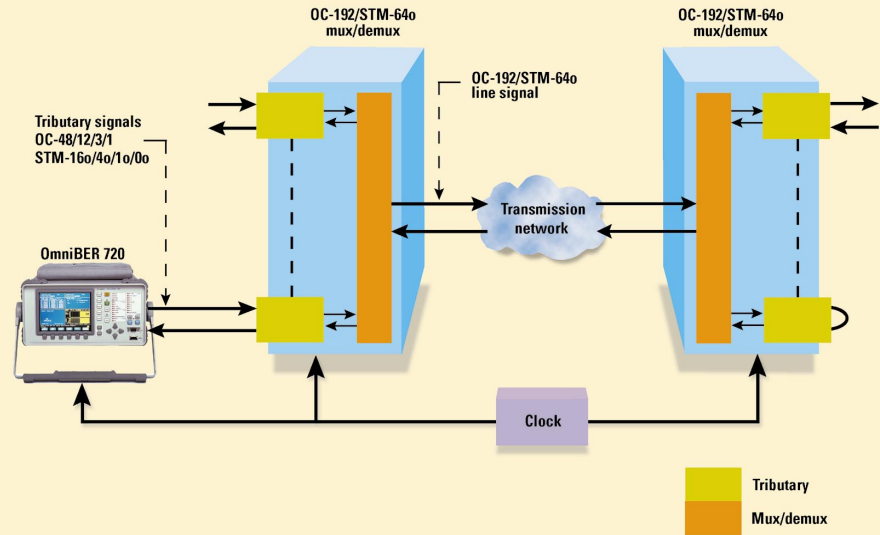
The OmniBER 720 isn't just about reduced cost. It's also about reduced test times—thanks to its SmartTest key. This invaluable feature lets you quickly access the analyzer's many powerful automated test functions to speed up testing. You can use it to:

- Automatically discover the channel structure of a received signal, including mixed channel structures
- Display STS-n/STM-n channel type, mapping and J1 path trace information for all channels
- Scroll through displayed channels to select a tributary for further analysis.



### [versatile optical tributary testing]

For optical tributary testing of high-speed SONET/SDH systems, the OmniBER 720 delivers multirate capability that includes OC-48/STM-16c, OC-12/STM-4c, OC-3/STM-1c, and OC-1/STM-0c. These rates, plus concatenated and channelized STS-n(c)/STM-n(c) payloads, means you have maximum flexibility for thorough testing of your network elements, including broadband cross-connects.

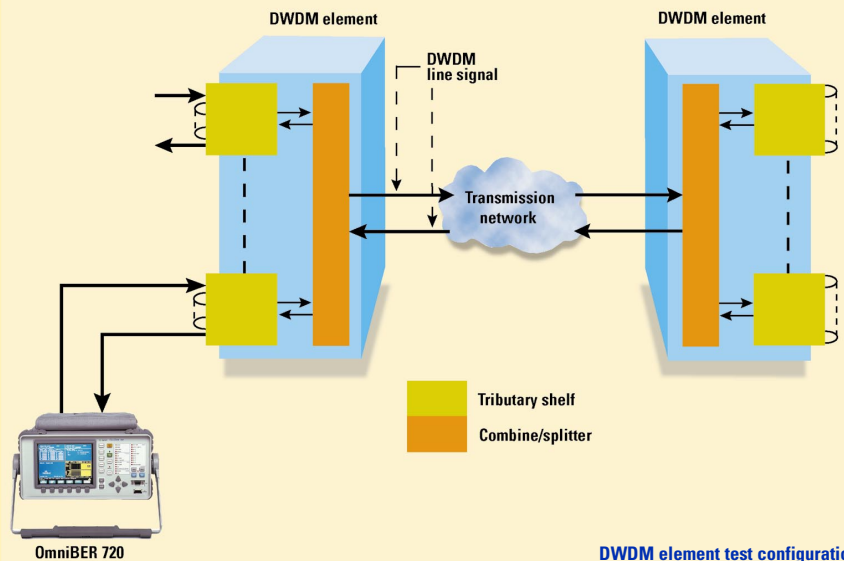


Optical tributary test configuration

### [effortless DWDM testing]

For DWDM testing, the OmniBER 720 verifies bit error performance of 2.5 Gb/s tributaries quickly—without compromising on accuracy. That's because it offers full bandwidth STS-48c/STM-16c bulk payload so you can test the entire channel bandwidth in a single check, saving you both time and resources.

In addition, the OmniBER 720 supports text decode and programming of J0 Section trace. This lets you easily identify correct routing of optical channels over DWDM transmission systems.



DWDM element test configuration

For price information on the 720 OmniBER, contact your local Agilent Technologies sales representative today.

## Product literature

You'll find further details of the OmniBER 720 analyzer's test capability in the product specifications publication no. 5980-0595E and configuration guide publication no. 5980-0596.

## Related Products



The Agilent Technologies OmniBER 719 communications performance analyzer is a rugged, portable one-box solution for manufacturing, installation and maintenance of SONET networks and network elements. It provides full T-carrier and SONET capability up to OC-48, including OC-48c payloads, plus jitter and ATM. For further information, refer to publication no. 5968-8741E.

The Agilent Technologies OmniBER 718 is a dual standard SONET/SDH version of the OmniBER 719. For further information, refer to publication no. 5968-8740E.

### Customer assistance and support

With offices and service centers around the world, your operations and customers are never far from fast, practical support and expertise. Agilent Technologies offers a range of support services to meet your requirements, ranging from on-line call center and web-based resources to full-time on-site consultation and at-hand inventory for immediate backup. Agilent also offers a range of warranty options and service agreements that can be tailored to your needs.

Use Agilent specialists to provide productivity-enhancing services that realize the full potential of your test solution

- start-up assistance
- finance and lease plans
- education programs
- training
- on-line consulting
- telephone product assistance
- service agreements
- warranty options
- productivity assistance



For more information about Agilent Technologies test and measurement products, applications, services, and for a current sales office listing, visit our web site: <http://www.agilent.com/find/tmdir>. You can also contact one of the following centers and ask for a test and measurement sales representative.

#### United States:

Agilent Technologies  
Test and Measurement Call Center  
P.O. Box 4026  
Englewood, CO 80155-4026  
(tel) 1 800 452 4844

#### Canada:

Agilent Technologies Canada Inc.  
5150 Spectrum Way  
Mississauga, Ontario  
L4W 5G1  
(tel) 1 877 894 4414

#### Europe:

Agilent Technologies  
Test & Measurement  
European Marketing Organisation  
P.O. Box 999  
1180 AZ Amstelveen  
The Netherlands  
(tel) (31 20) 547 2000

#### Japan:

Agilent Technologies Japan Ltd  
Call Center  
9-1, Takakura-Cho, Hachioji-Shi,  
Tokyo 192-8510, Japan  
(tel) (81) 426 56 7832  
(fax) (81) 426 56 7840

#### Latin America:

Agilent Technologies  
Latin American Region Headquarters  
5200 Blue Lagoon Drive, Suite #950  
Miami, Florida 33126  
USA  
(tel) (305) 267 4245  
(fax) (305) 267 4286

#### Australia/New Zealand:

Agilent Technologies Australia Pty Ltd  
347 Burwood Highway  
Forest Hill, Victoria 3131  
(tel) 1-800 629 485 (Australia)  
(fax) (61 3) 9272 0749  
(tel) 0 800 738 378 (New Zealand)  
(fax) (64 4) 802 6881

#### Asia Pacific:

Agilent Technologies  
24/F, Cityplaza One, 1111 King's Road  
Taikoo Shing, Hong Kong  
(tel) (852) 3197 7777  
(fax) (852) 2506 9284

Technical data is subject to change

© Copyright 2000  
Agilent Technologies UK Ltd

Printed in the UK  
5980-0594E 05/00



**Agilent Technologies**

Innovating the HP Way