

Directional Couplers In-Line Style

Applications

- Subassemblies
- Lab Systems
- Leveling Loops
- Power Monitoring
- Test and Calibration



Features

- Military Grade
- 1.5 - 2.0 GHz
- "In-Line" Configuration
- Connectors Per MIL-C-39012
- Rugged Aluminum Housing

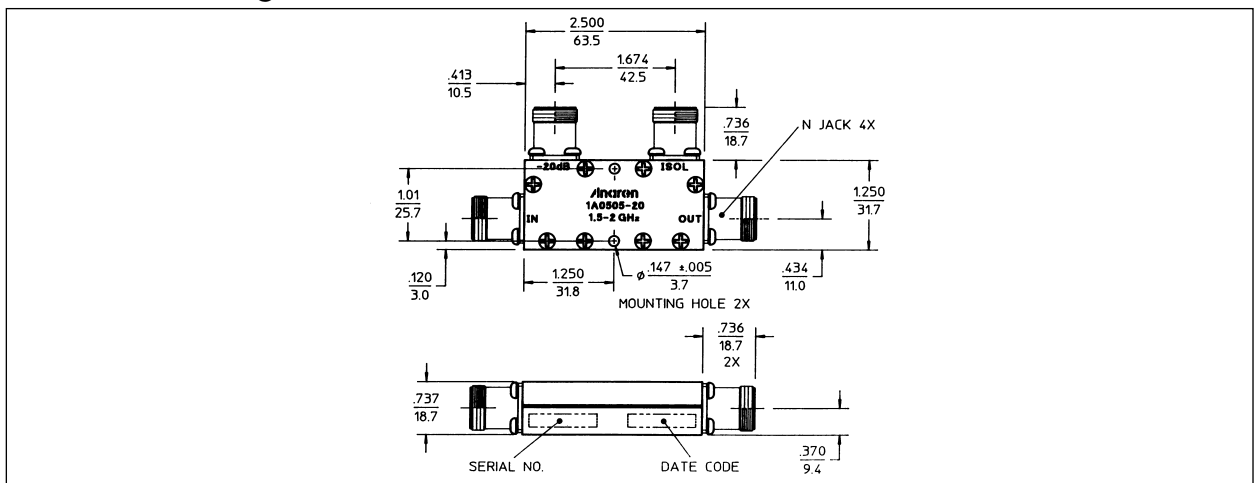
Electrical Specifications

Model#	Frequency GHz	Coupling dB Mean	Insert. Loss dB Max	Input VSWR Max:1
1A0505-10	1.5 - 2.0	10.0 ± 1.0	0.20	1.17
1A0505-20	1.5 - 2.0	20.0 ± 1.5	0.20	1.17
1A0505-30	1.5 - 2.0	30.0 ± 2.0	0.20	1.17

Model #	Freq. Sems. dB Max	Directivity dB Min	Max CW Power* Forward	Backward
1A0505-10	±0.25	20	150	150
1A0505-20	±0.25	19	150	150
1A0505-30	±0.20	16	150	150

Notes: Electrical and Mechanical Specifications subject to change without notice. Impedance: 50 ohms nominal. Meets MIL-E-5400 Class 3 requirements. Additional screening available for military and space applications. *These power ratings apply when optional termination is supplied by Anaren and coupled port VSWR is 2.0:1 or less. Higher power can be handled with a lower VSWR termination. In general the Max CW Power is identical to 3 dB couplers when there is no internal termination or one supplied by Anaren. All models have SMA connectors.

Outline Drawing



Sales Desk USA: Voice: (800) 544-2414 Fax: (315) 432-9121
 Sales Desk Europe: Voice: (+44) 23 92 232392 Fax: (+44) 23 92 251369