

## Directional Couplers

10 dB

### Description

The 1W1305-10 is a low profile 10dB directional coupler in an easy to use surface mount package covering DCS and PCS band applications. The 1W1305-10 has larger RF pads and spacing between ground for improved peak power capabilities and reliability in volume manufacturing and can be used in most high power designs. Parts have been run through rigorous qualification testing and units are 100% tested. They are manufactured using materials with  $\alpha$  and  $\beta$  thermal expansion coefficients compatible with common substrates.



### Features

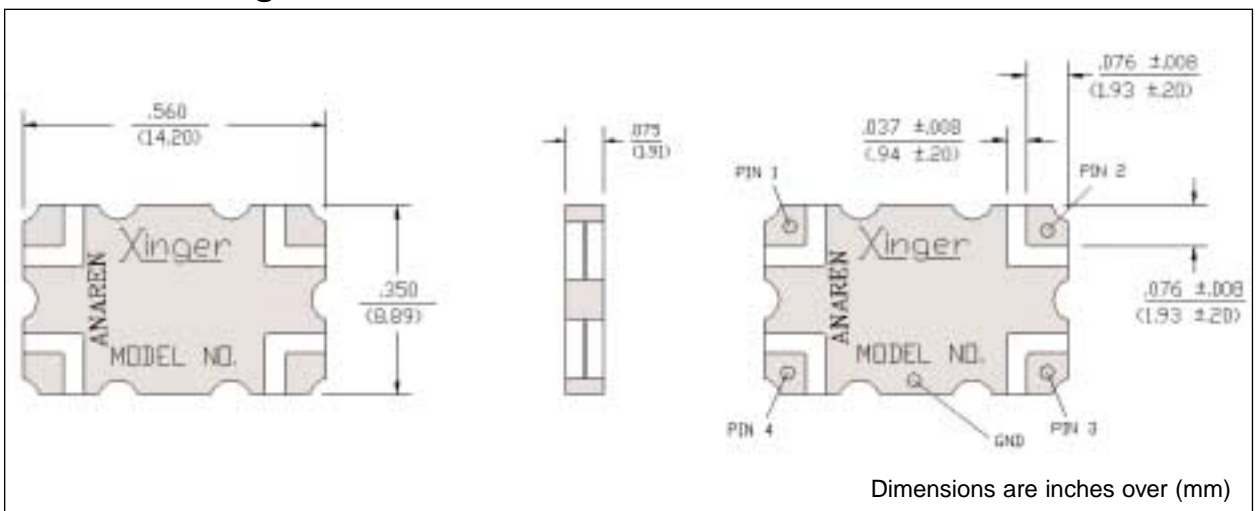
- 1.7 - 2.0 GHz
- Low Loss
- High Directivity
- Surface Mountable
- Tape And Reel
- Convenient Package
- 100% Tested

### Electrical Specifications

	Frequency GHz	Mean Coupling dB	Insert. Loss dB Max	VSWR Max : 1
Narrow	1.805 - 1.880	10.3 ± 0.5	0.25	1.18
Narrow	1.930 - 1.990	10.3 ± 0.5	0.25	1.18
Broad	1.7 - 2.0	10.3 ± 0.5	0.25	1.18
	Freq. Sensitivity dB Max	Directivity dB Min	$\Theta_{JC}$	Power Watts Ave/CW
Narrow	±0.05	20		
Narrow	±0.05	20	12.9	100
Broad	±0.25	20		

Specifications subject to change without notice.

### Outline Drawing



Available on Tape and Reel for Pick and Place Manufacturing.

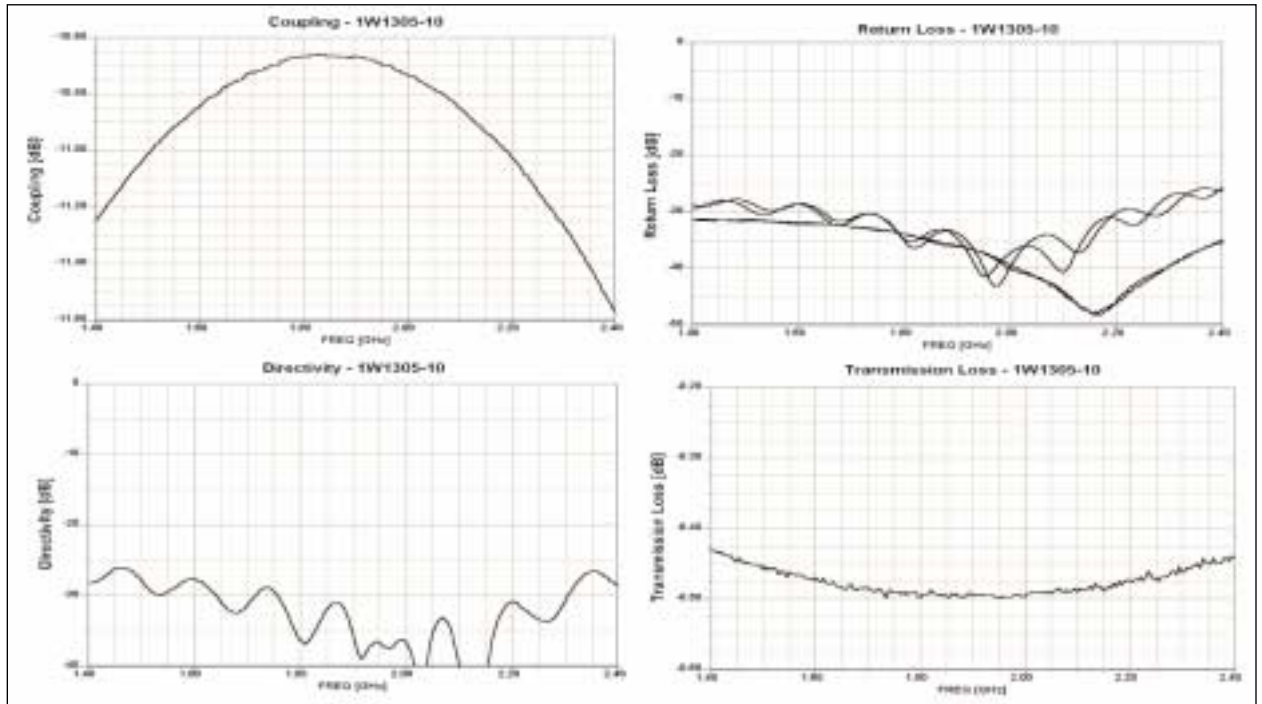
Sales Desk USA: Voice: (800) 544-2414 Fax: (315) 432-9121  
 Sales Desk Europe: Voice: (+44) 23 92 232392 Fax: (+44) 23 92 251369

# Model 1W1305-10

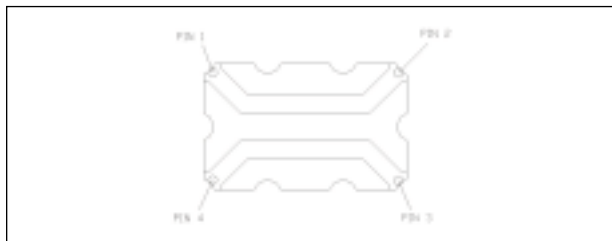
# Anaren

# Xinger®

## Typical Performance



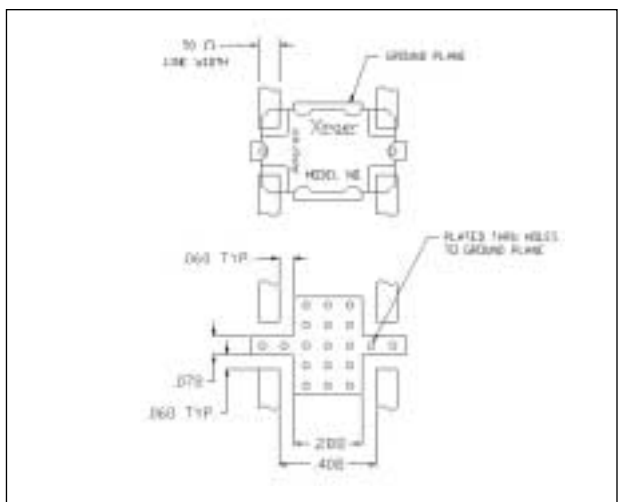
## Pin Configuration



	Pin 1	Pin 2	Pin 3	Pin 4
#1	Input	Output	Isolated	Coupled
#2	Output	Input	Coupled	Isolated
#3	Isolated	Coupled	Input	Output
#4	Coupled	Isolated	Output	Input

visit [www.anaren.com](http://www.anaren.com)

## Mounting Footprint



Available on Tape and Reel for Pick and Place Manufacturing.

