



## Directional Couplers

5 dB

### Description

The 1X605 is a low profile 5dB directional coupler in an easy to use miniature surface mount package covering ISM, MMDS and Wireless LAN applications. The 1X605 is ideal for 3 and 4 way inline split/combine amplifiers and for power injection and can be used in most high power designs. Parts have been run through rigorous qualification testing and units are 100% tested. They are manufactured using materials with x and y thermal expansion coefficients compatible with common substrates.



### Features

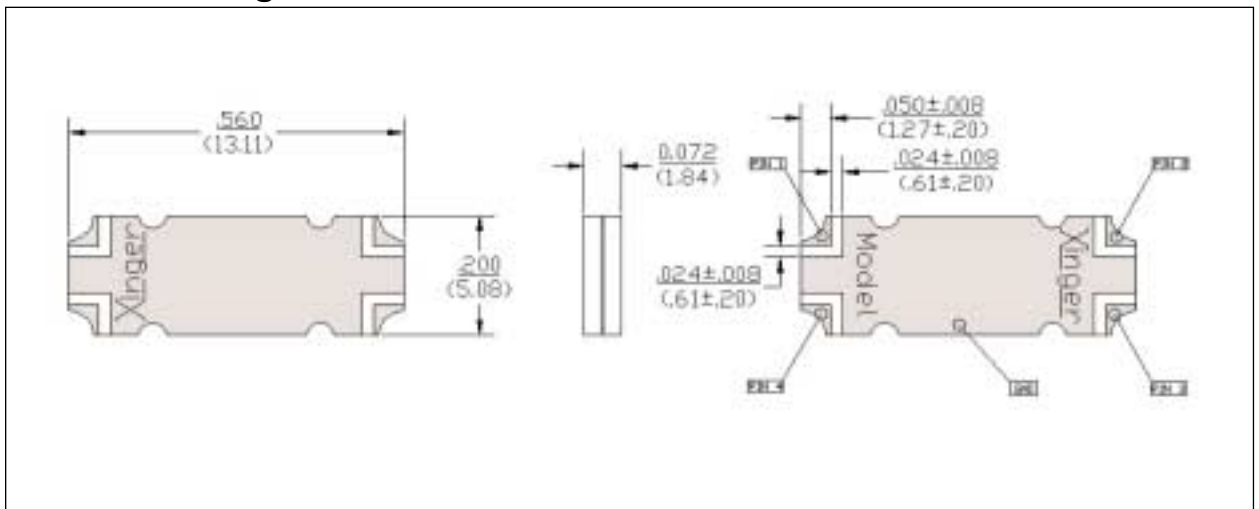
- 2.3 - 2.7 GHz
- Very Low Loss
- High Directivity
- Surface Mountable
- Tape And Reel
- Convenient Package
- 100% Tested

### Electrical Specifications

Frequency GHz	Mean Coupling dB	Insert. Loss dB Max	VSWR Max : 1
2.3 - 2.7	5.0 ± 0.5	0.25	1.20
Freq. Sens. dB Max	Directivity dB Min	Θ <sub>JC</sub> (°C/diss. Watt)	Power Watts Ave/CW
±0.30	18	26.7	60

Specifications subject to change without notice.

### Outline Drawing

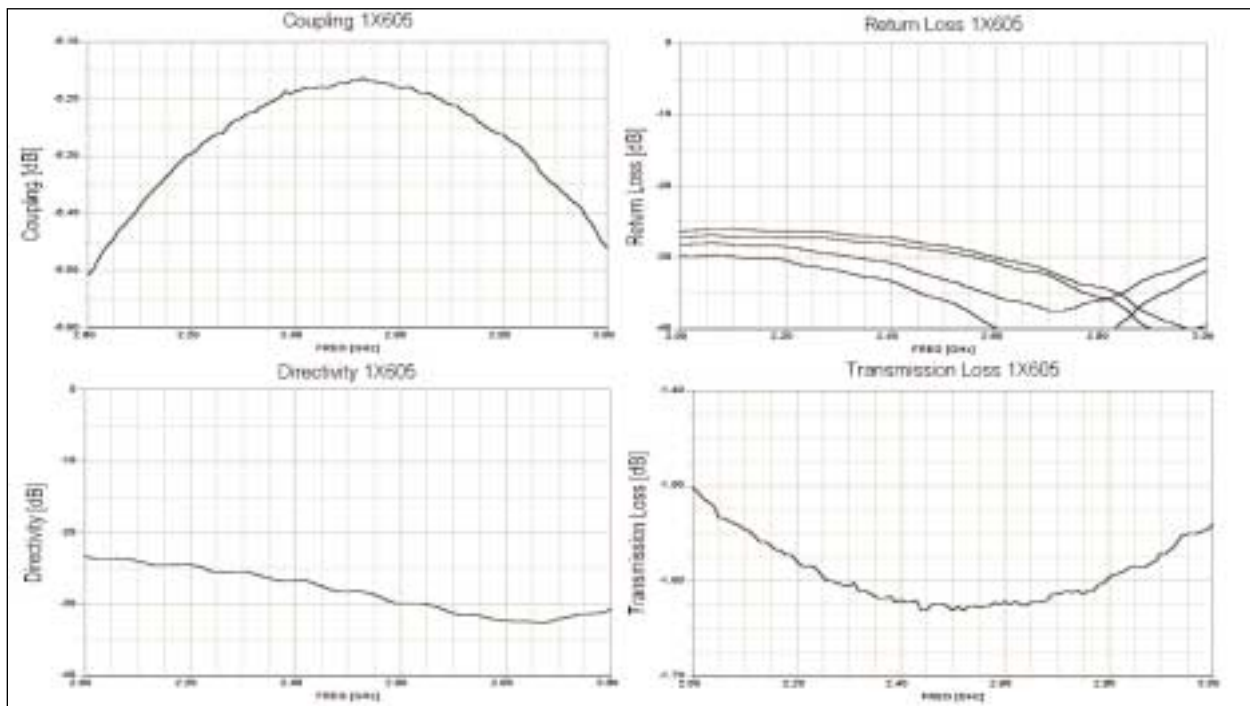


# Model 1X605

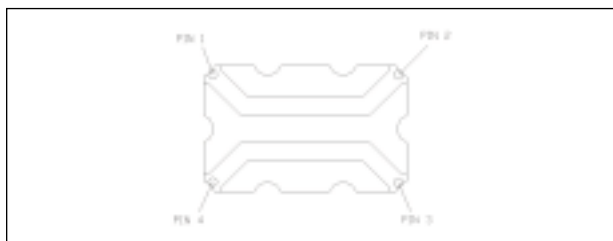
# Anaren

# Xinger®

## Typical Performance



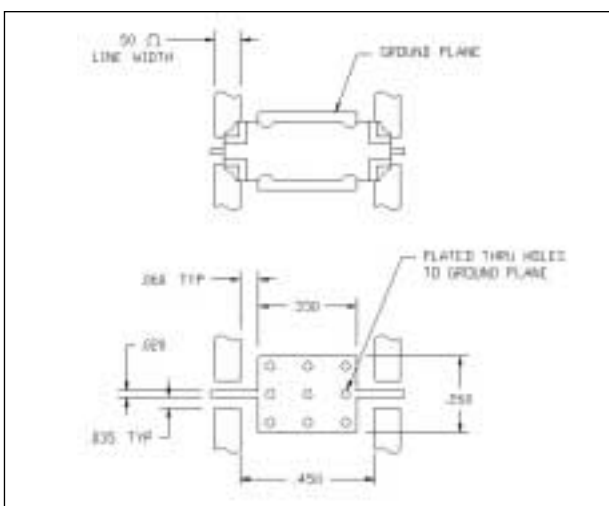
## Pin Configuration



	Pin 1	Pin 2	Pin 3	Pin 4
#1	Input	Output	Isolated	Coupled
#2	Output	Input	Coupled	Isolated
#3	Isolated	Coupled	Input	Output
#4	Coupled	Isolated	Output	Input

visit [www.anaren.com](http://www.anaren.com)

## Mounting Footprint



Available on Tape and Reel for Pick and Place Manufacturing.

