

Xinger®



Directional Couplers

10 dB

Description

The 1X610 is a low profile 10dB directional coupler in an easy to use miniature surface mount package covering ISM, MMDS and Wireless LAN applications. The 1X610 is ideal for power and frequency detection as well as power injection and can be used in most high power designs. Parts have been run through rigorous qualification testing and units are 100% tested. They are manufactured using materials with x and y thermal expansion coefficients compatible with common substrates.

Features

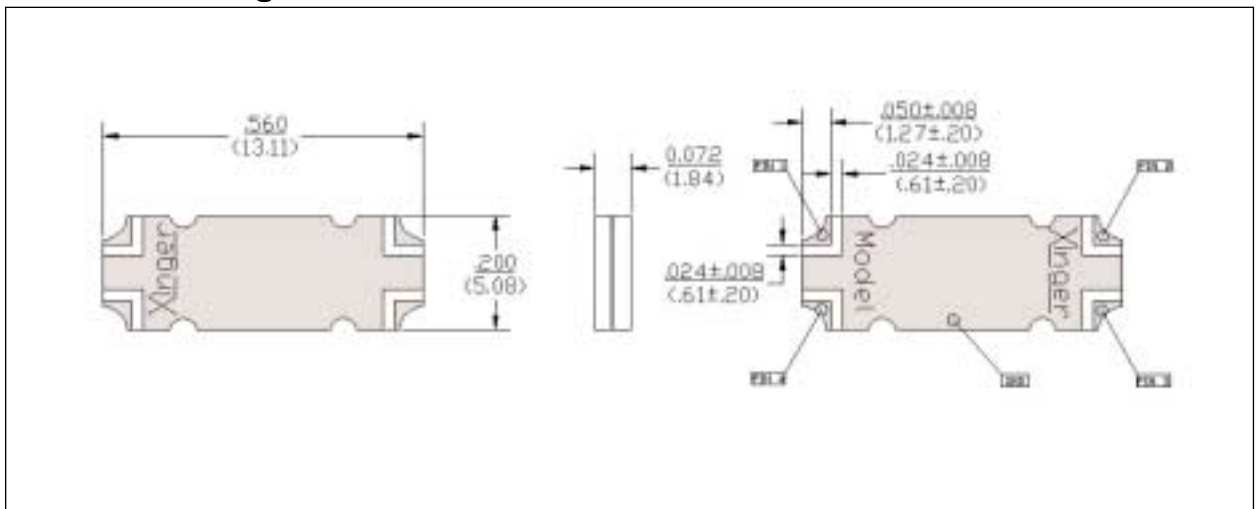
- 2.3 - 2.7 GHz
- Low Loss
- High Directivity
- Surface Mountable
- Tape And Reel
- Convenient Package
- 100% Tested

Electrical Specifications

Frequency GHz	Mean Coupling dB	Insert. Loss dB Max	VSWR Max : 1
2.3 - 2.7	10.0 ± 1.0	0.25	1.20
Freq. Sens. dB Max	Directivity dB Min	Θ _{JC} (°C/diss. Watt)	Power Watts Ave/CW
±0.30	20	26.4	60

Specifications subject to change without notice.

Outline Drawing

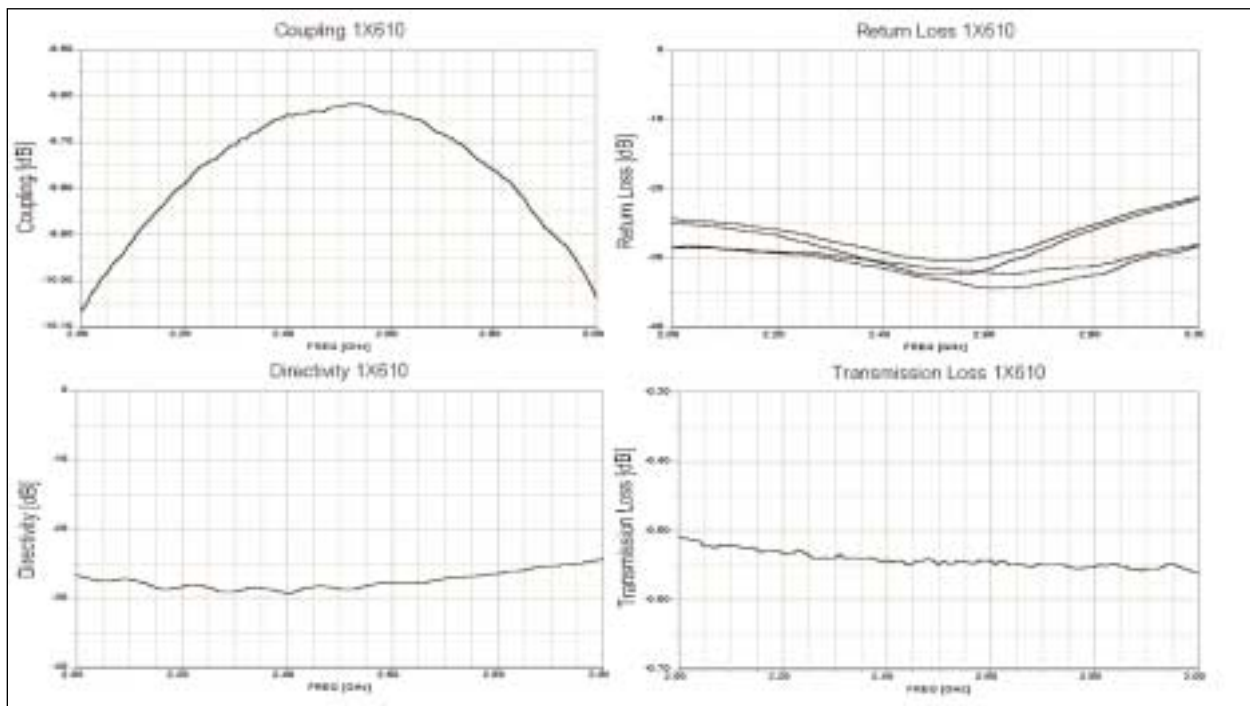


Model 1X610

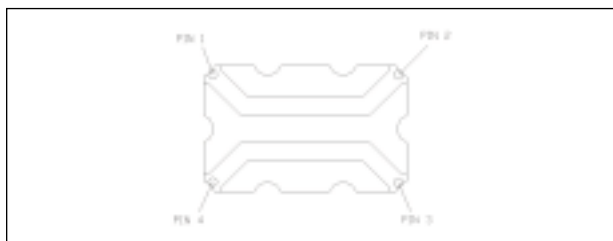
Anaren

Xinger®

Typical Performance



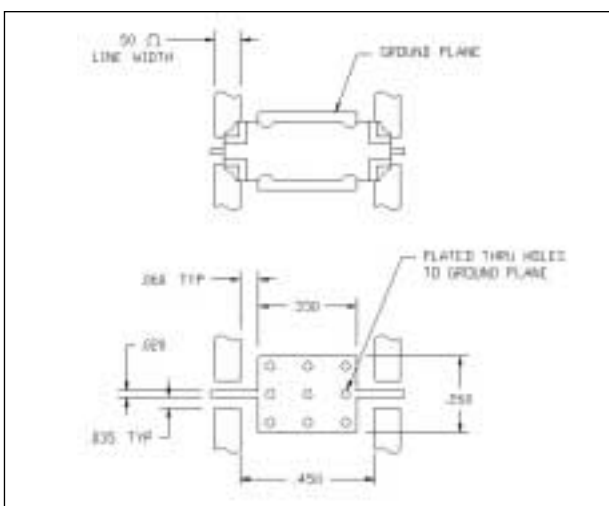
Pin Configuration



	Pin 1	Pin 2	Pin 3	Pin 4
#1	Input	Output	Isolated	Coupled
#2	Output	Input	Coupled	Isolated
#3	Isolated	Coupled	Input	Output
#4	Coupled	Isolated	Output	Input

visit www.anaren.com

Mounting Footprint



Available on Tape and Reel for Pick and Place Manufacturing.

