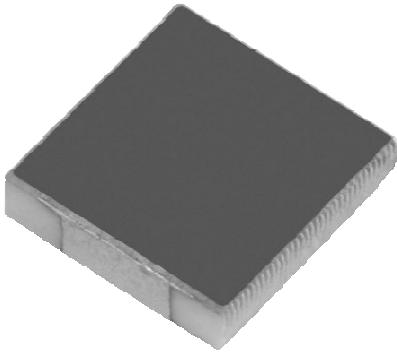


## Surface Mount Termination 16 Watts, 50Ω



### General Specifications

|                          |                         |
|--------------------------|-------------------------|
| <b>Resistive Element</b> | Thick film              |
| <b>Substrate</b>         | Beryllium oxide ceramic |
| <b>Terminals</b>         | Thick film silver       |

### Electrical Specifications

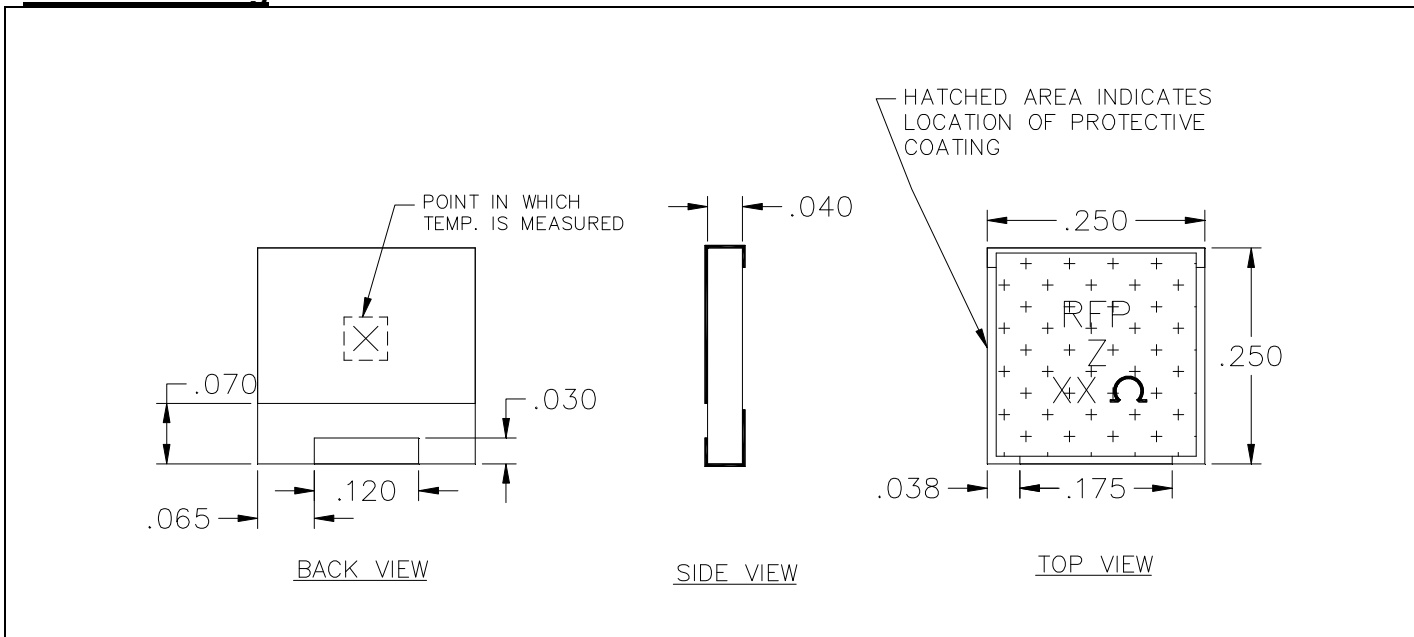
|                          |                     |
|--------------------------|---------------------|
| <b>Resistance Range:</b> | 50 ohms, $\pm 2\%$  |
| <b>Frequency Range;</b>  | DC – 3.0 GHz        |
| <b>Power:</b>            | 16 Watts            |
| <b>VSWR</b>              | 1.25:1 DC – 3.0 GHz |

**Note:** Tolerance is  $\pm 0.010"$ , unless otherwise specified. Designed to meet or exceed applicable portions of MIL-E-5400. Operating temperature is  $-55^{\circ}\text{C}$  to  $125^{\circ}\text{C}$  (see chart for derating temperatures). All dimensions in inches. Specifications subject to change with out notice.

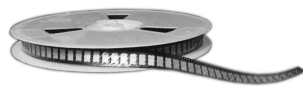
### Features:

- DC – 3.0 GHz
- 16 Watts
- BeO Ceramic
- Non-Nichrome Resistive Element
- Low VSWR
- 100% Tested

### Outline Drawing

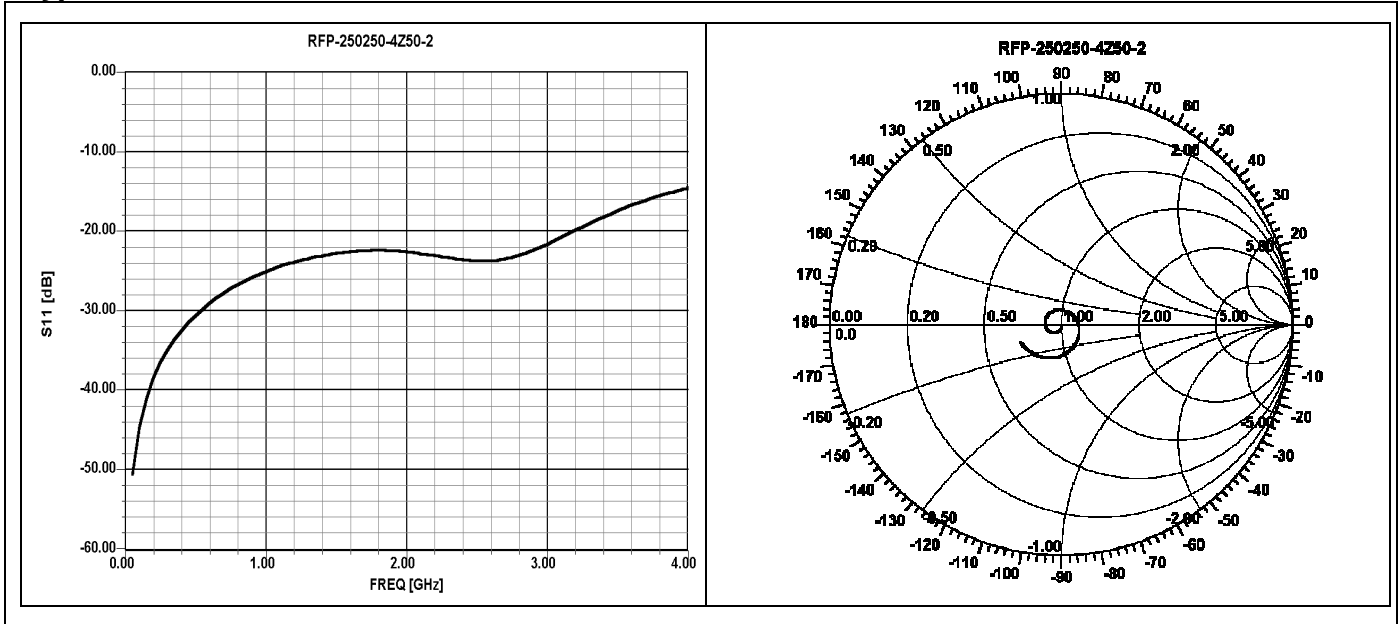


250250-4Z50-2 (097) Rev A

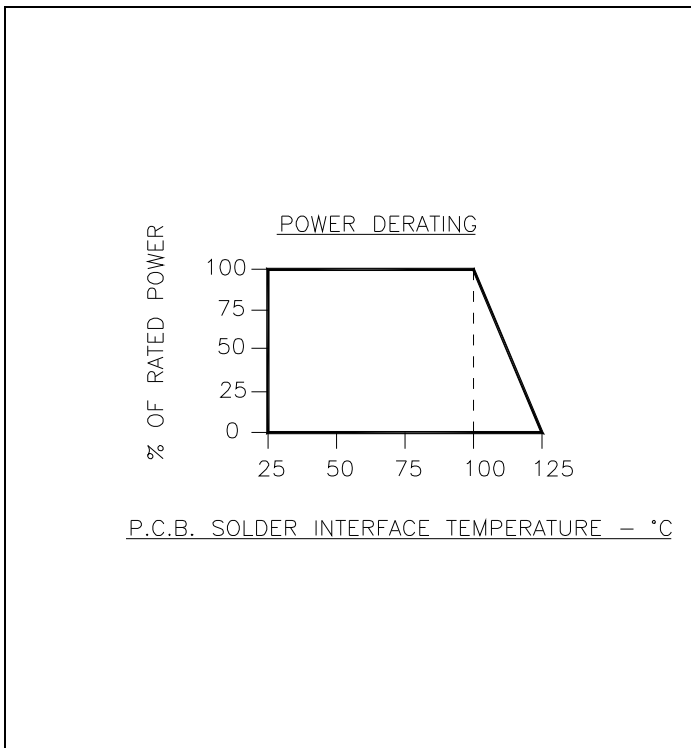




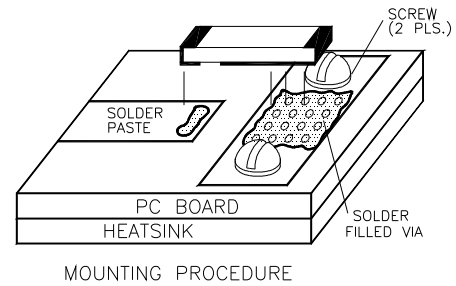
### Typical Performance:



### Power De-rating:



### Mounting Footprint and Procedure:

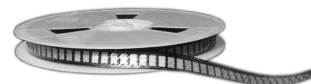


1. Solder part in place using 60/40 type solder with Temperature controlled iron (700°F).
2. Drill thermal vias through PCB and fill with solder, such as 60/40 type.
3. To ensure good thermal connectivity to heat sink, drill and tap heatsink and mount PCB board to heat sink using screws.

250250-4Z50-2 (097) Rev A

USA/Canada: (315) 432-8909  
 Toll Free: (800) 544-2414  
 Europe: +44 2392-232392

Available on Tape and Reel For Pick and Place Manufacturing.



**Anaren**  
 What'll we think of next?™