



## Power Dividers In-Phase, 3-Way

### Description



The 4E3305 is a low profile 3 way Wilkinson power divider in an easy to use surface mount package designed for GPS applications. The 4E3305 is ideal for low power, In-Phase divider/combiner applications. Parts have been run through rigorous qualification testing and units are 100% tested. They are manufactured using materials with x and y thermal expansion coefficients compatible with common substrates.

### Features

- 1.1 - 1.3 GHz
- 3-Way Split
- Low Loss
- High Isolation
- In-Phase
- Surface Mountable
- Tape And Reel
- Convenient Package
- 100% Tested

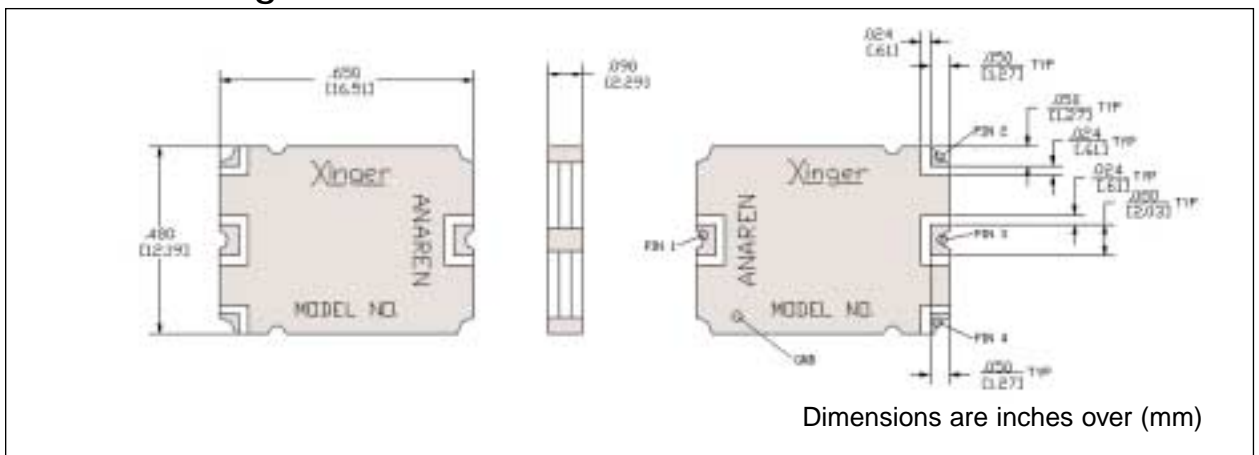
### Electrical Specifications

Frequency GHz	Isolation dB Min/Typ	Insert. Loss dB Max
1.1 - 1.3	16	0.30
VSWR In/Out Max : 1	Amplitude Balance dB Max	Phase Balance Degrees Max
1.35/1.50	±0.30	3

**Note:** Specifications based on performance of units installed in a microstrip RF test fixture. 50 Ohms nominal impedance. -55°C to +85°C operating temperature. Maximum input power: 5 Watts average CW when terminated into a 1.2:1 maximum VSWR.

**Specifications subject to change without notice.**

### Outline Drawing



Available on Tape and Reel for Pick and Place Manufacturing.

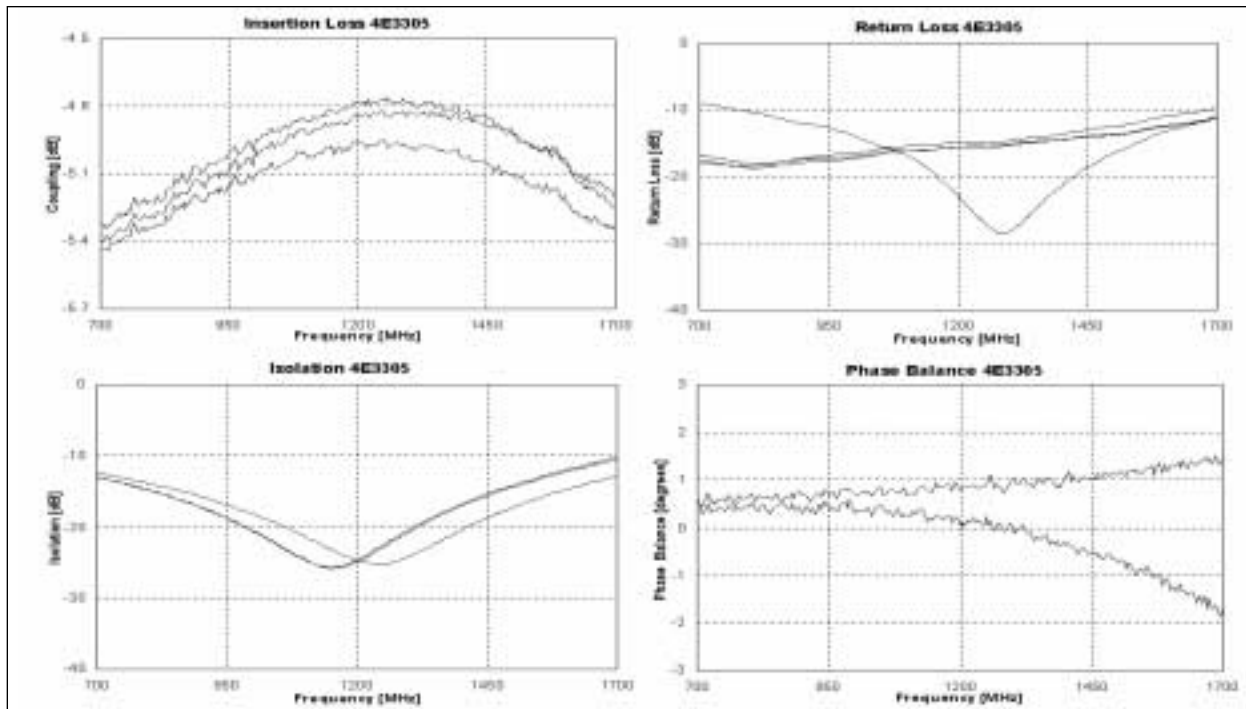
Sales Desk USA: Voice: (800) 544-2414 Fax: (315) 432-9121  
 Sales Desk Europe: Voice: (+44) 23 92 232392 Fax: (+44) 23 92 251369

# Model 4E3305

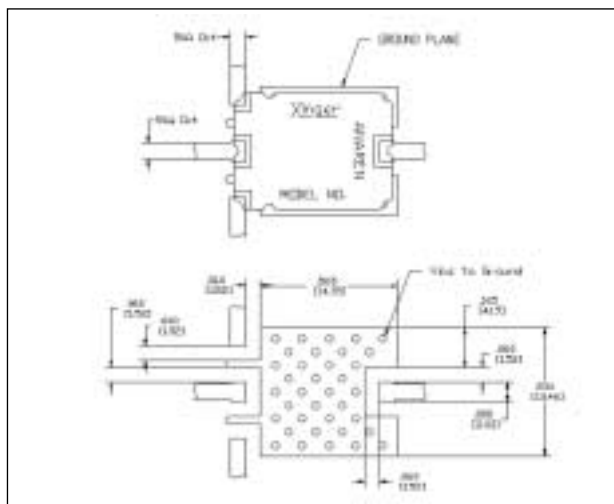
# Anaren

# Xinger®

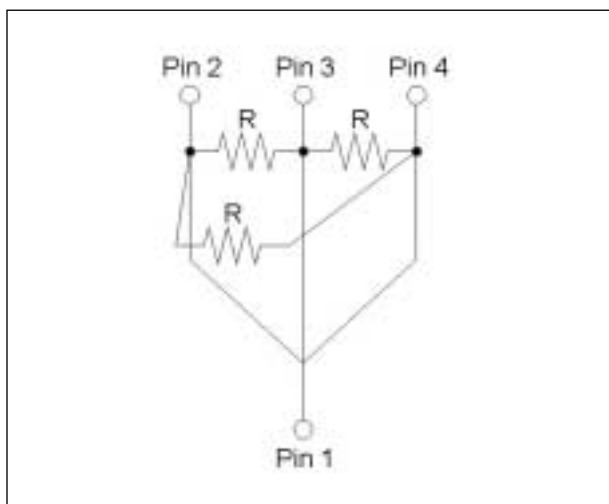
## Typical Performance



## Mounting Footprint



## Electrical Schematic



Available on Tape and Reel for Pick and Place Manufacturing.

