

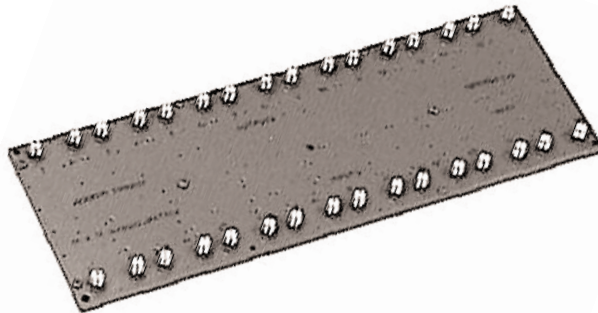
**59H0014****Anaren**

# Amplifier Feed Matrices

## 16 x 16 Hybrid

### Applications

- Power Amplifiers
- Sectorize Base Station Transmissions
- Beam Forming
- Wireless Infrastructure
- GSM and AMPS Frequencies



### Features

- Commercial Grade
- Low Cost
- Lightweight
- 100% Tested
- Flush Mounting

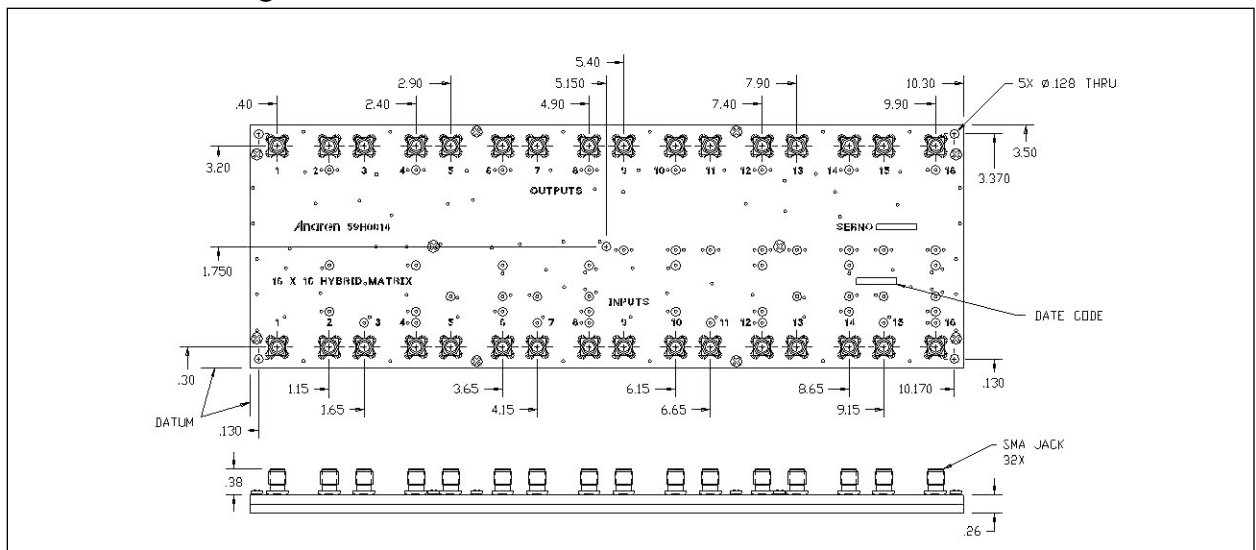
### Electrical Specifications

Type	Frequency GHz	Isolation dB Min	Insertion Loss dB Max
Hybrid	0.75 - 0.95	20	1.2
VSWR Max : 1	Amp. Bal. dB Peak	Phase Bal. Degrees Peak	Connectors
1.25	±0.75	±4.0	SMA

**Notes:** Impedance: 50 ohms nominal. Meets MIL-E-5400 Class III requirements. Additional screening available for military and space applications.

**Electrical and Mechanical Specifications subject to change without notice.**

### Outline Drawing



**Sales Desk USA:** Voice: (800) 544-2414 Fax: (315) 432-9121  
**Sales Desk Europe:** Voice: (+44) 23 92 232392 Fax: (+44) 23 92 251369