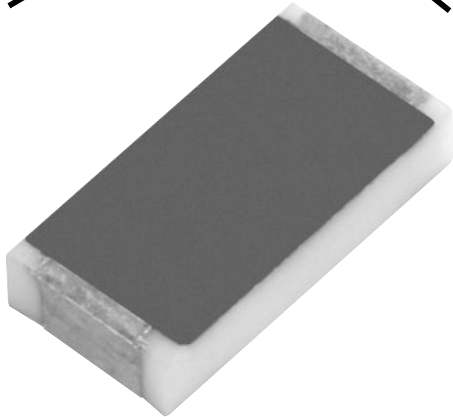


## Surface Mount Terminations

10 Watts, 50  $\Omega$



### Features

- DC - 3.0 GHz
- 10 Watts
- BeO Ceramic
- Non-Nichrome Resistive Element
- Low VSWR
- 100% Tested

### General Specifications

<b>Resistive Element:</b>	Thick film
<b>Substrate:</b>	Beryllium oxide ceramic
<b>Terminals:</b>	Thick film silver

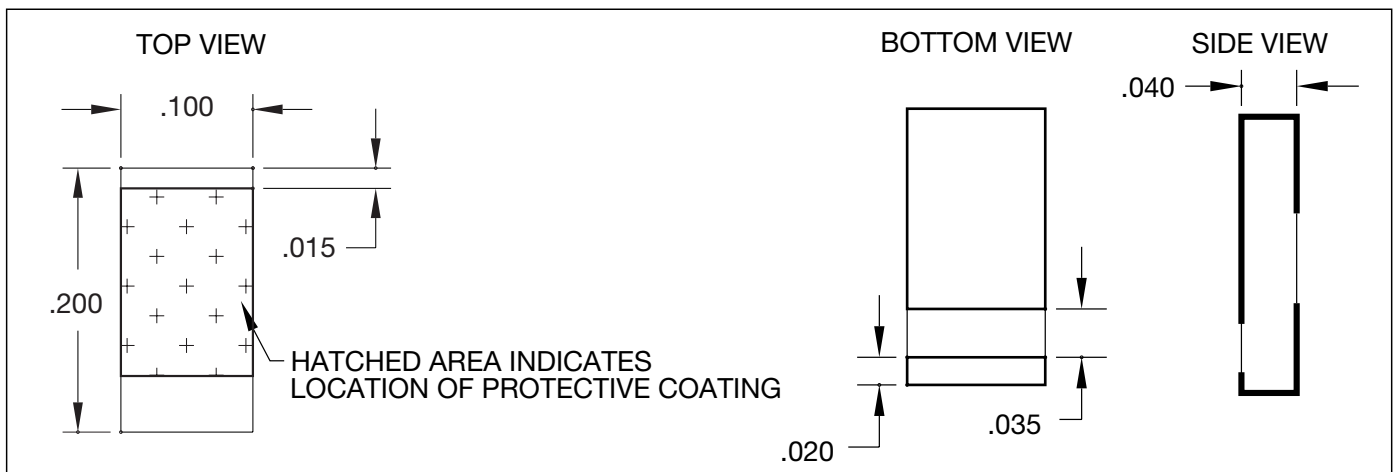
### Electrical Specifications

<b>Resistance Value:</b>	50 ohms, $\pm 2\%$
<b>Frequency Range:</b>	DC - 3.0 GHz
<b>Input Power:</b>	10 Watts
<b>V.S.W.R.:</b>	1.25:1

**Notes:** Tolerance is  $\pm .010$ , unless otherwise specified. Operating temperature is  $-55^{\circ}\text{C}$  to  $+125^{\circ}\text{C}$  (see chart). Designed to meet or exceed applicable portions of MIL-E-5400. All dimensions are in inches.

**Specifications subject to change without notice.**

### Outline Drawing



Available on Tape and Reel for Pick and Place Manufacturing.

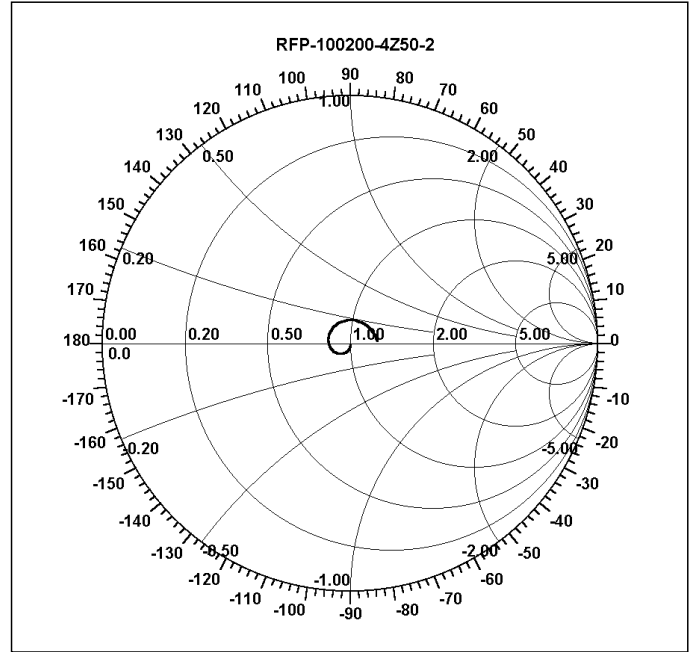
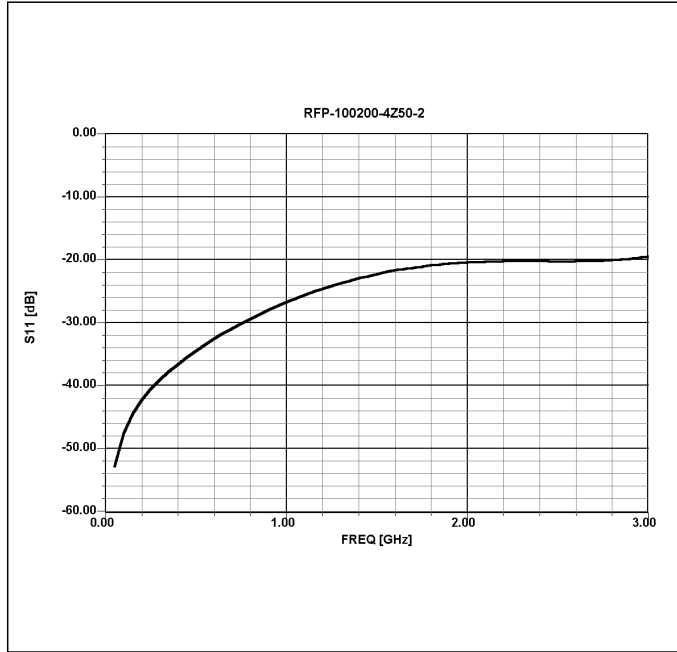
Sales Desk USA: Voice: (800) 544-2414 Fax: (315) 432-9121  
Sales Desk Europe: Voice: (+44) 23 92 232392 Fax: (+44) 23 92 251369

# Model RFP-100200-4Z50-2

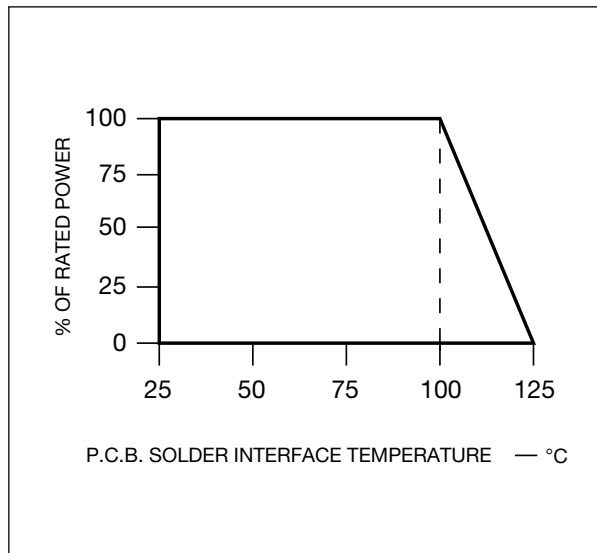
# Anaren

## RF Power

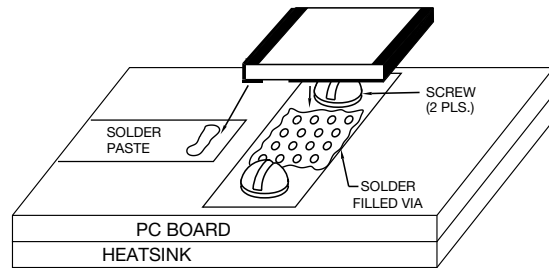
### Typical Performance



### Power Derating



### Suggested Mounting Procedures



1. Solder part in place using 60/40 type solder with controlled temperature iron (700°F).
2. Drill thermal vias through PCB and fill with solder, such as 60/40 type.
3. To ensure good thermal connectivity to heat sink, drill and tap heatsink and mount PCB board to heat sink using screws.

Available on Tape and Reel for Pick and Place Manufacturing.

