



## Crossovers

RF-RF

### Description

The X2B is a low profile Xinger crossover in an easy to use miniature surface mount package for most applications up to 6GHz. The X2B is ideal for crossing RF-RF junctions and is an ideal solution for the ever increasing demands of the wireless industry for smaller, more economical printed circuit boards. Parts have been run through rigorous qualification and units are 100% tested. They are manufactured using materials with x and y thermal expansion coefficients compatible with common substrates.



### Features

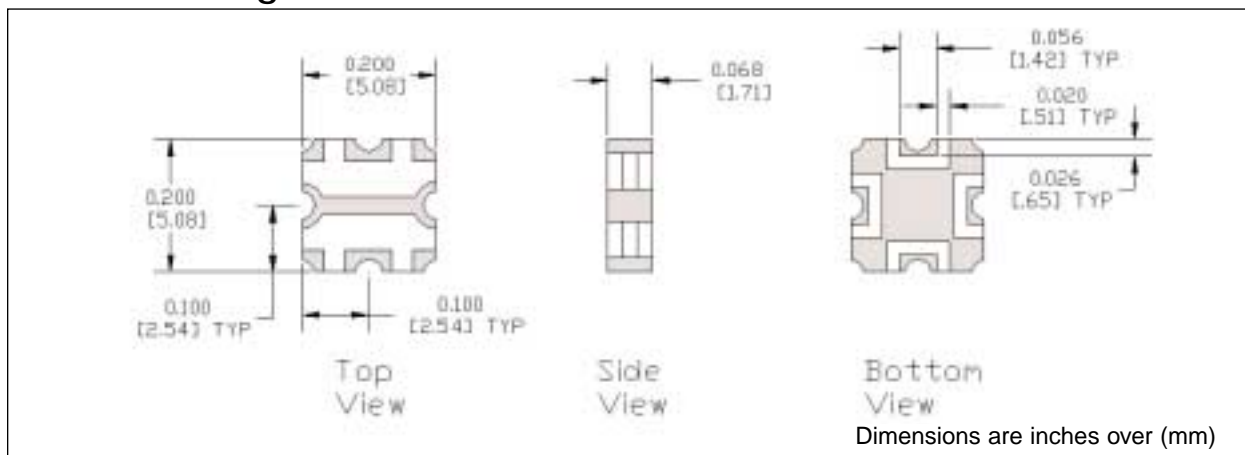
- DC - 6.0 GHz
- RF-RF Crosses
- Very Low Loss
- Excellent Isolation
- Surface Mountable
- Tape & Reel
- 100% Tested

### Electrical Specifications

Frequency GHz	Port Impedance Ohms	Isolation dB Min	Insert. Loss dB Max
DC - 2.5		60	0.05
2.5 - 3.6	50	30	0.10
3.6 - 6.0		20	0.15
Return Loss dB min	$\Theta_{JC}$ (°C/diss. Watt)	Avg. Power CW [Watts]	
20	285.2 (microstrip)	30 (m.s.)	50 (s.l.)
20	143.4 (stripline)	15 (m.s.)	25 (s.l.)
15		10 (m.s.)	15 (s.l.)

Specifications subject to change without notice.

### Outline Drawing



Available on Tape and Reel for Pick and Place Manufacturing.

Sales Desk USA: Voice: (800) 544-2414 Fax: (315) 432-9121  
 Sales Desk Europe: Voice: (+44) 23 92 232392 Fax: (+44) 23 92 251369

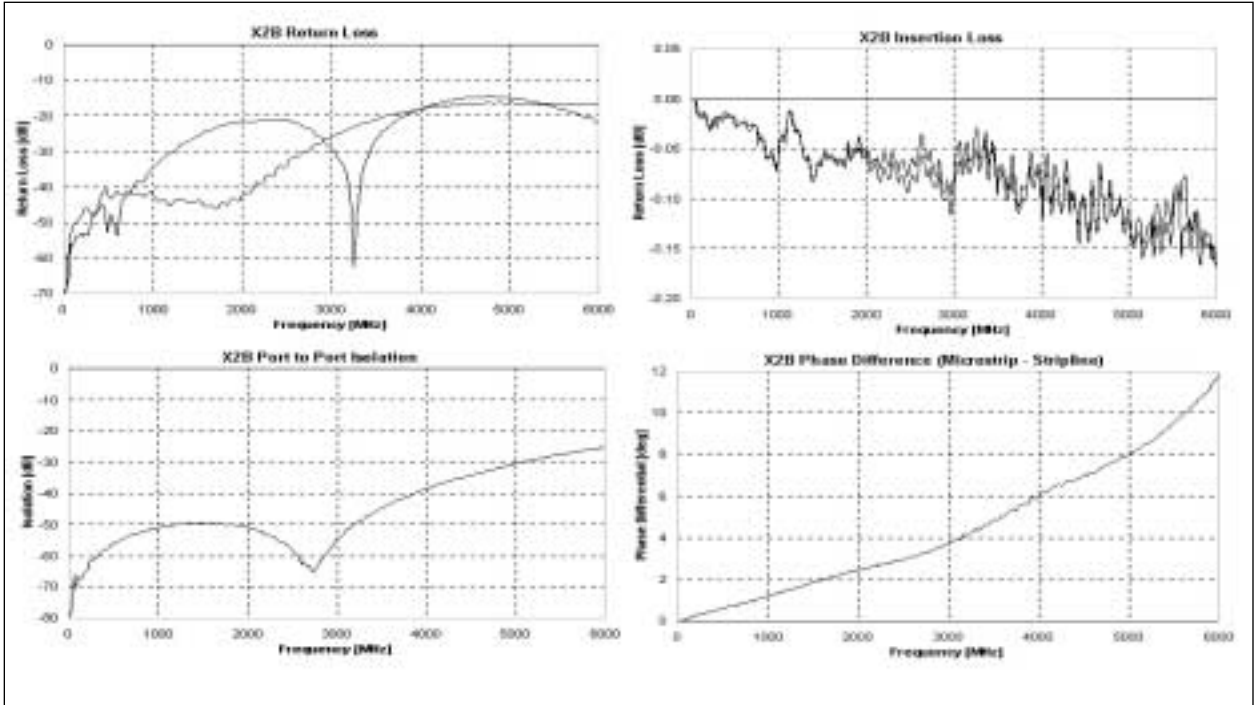
# Model X2B

# Anaren

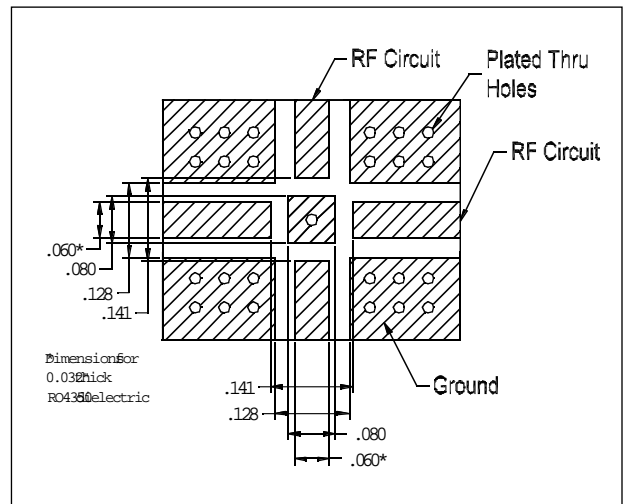
[www.anaren.com](http://www.anaren.com)

# Xinger®

## Typical Performance



## Mounting Footprint



Available on Tape and Reel for Pick and Place Manufacturing.

Sales Desk USA: Voice: (800) 544-2414 Fax: (315) 432-9121  
 Sales Desk Europe: Voice: (+44) 23 92 232392 Fax: (+44) 23 92 251369