

C QUADRANT BLOCK

DESCRIPTION AND USE

CONTENTS	PAGE
1. GENERAL	1
2. DESCRIPTION	1
3. USE	1
4. MAINTENANCE	1

1. GENERAL

1.01 This section describes the C quadrant block which is used to guide the winch line and cable when placing or removing underground cable.

1.02 This section is reissued to delete reference to the B quadrant block. The B quadrant block has been rated manufacture discontinued (Mfr Disc.).

2. DESCRIPTION

2.01 The quadrant block consists of six sheaves supported in an arc of a circle by an aluminum frame to provide a bending radius of 24 inches. See Fig. 1.

2.02 The C quadrant block utilizes cast aluminum sheaves that will accommodate cables that are less than 4 inches in diameter. The C quadrant block weighs approximately 75 pounds.

3. USE

3.01 The C quadrant block can be used in place of the C, M, or T cable sheaves in the D pulling frame or the C cable sheave shackle and can be used in place of the C manhole sheave on the edge of a manhole opening.

3.02 The quadrant block is retained in the pulling frame or cable sheave shackle with the standard sheave pins supplied with the D pulling frame and the C cable sheave shackles.

Note: Do not use the quadrant blocks with the D underground cable puller.

3.03 Figures 2, 3, and 4 illustrate a quadrant block used with a pulling frame, a cable sheave shackle attached to a quadrant block, and a quadrant block positioned on the edge of a manhole opening. Detailed instructions covering the use of the quadrant blocks when placing or removing underground cable are included in Sections 628-200-208 and 628-240-242.

4. MAINTENANCE

4.01 Before each use examine the quadrant block for signs of excessive wear or damage. Replace worn or damaged sheaves. Be sure all screws are properly tightened.

4.02 To replace a sheave, remove the self-locking screws from one side of the block with a 5/16-inch Allen wrench and remove the side plate. Remove the spacer and the old sheave. Slide the new sheave on the shaft. Replace the spacer and, making certain that all six spacers are in place, replace the side plate. Replace and tighten the 12 self-locking screws.

4.03 Replacement parts are:

Screw, self-locking, for C quadrant block

Sheave assembly (including bearings) for C quadrant block.

NOTICE

Not for use or disclosure outside the
Bell System except under written agreement

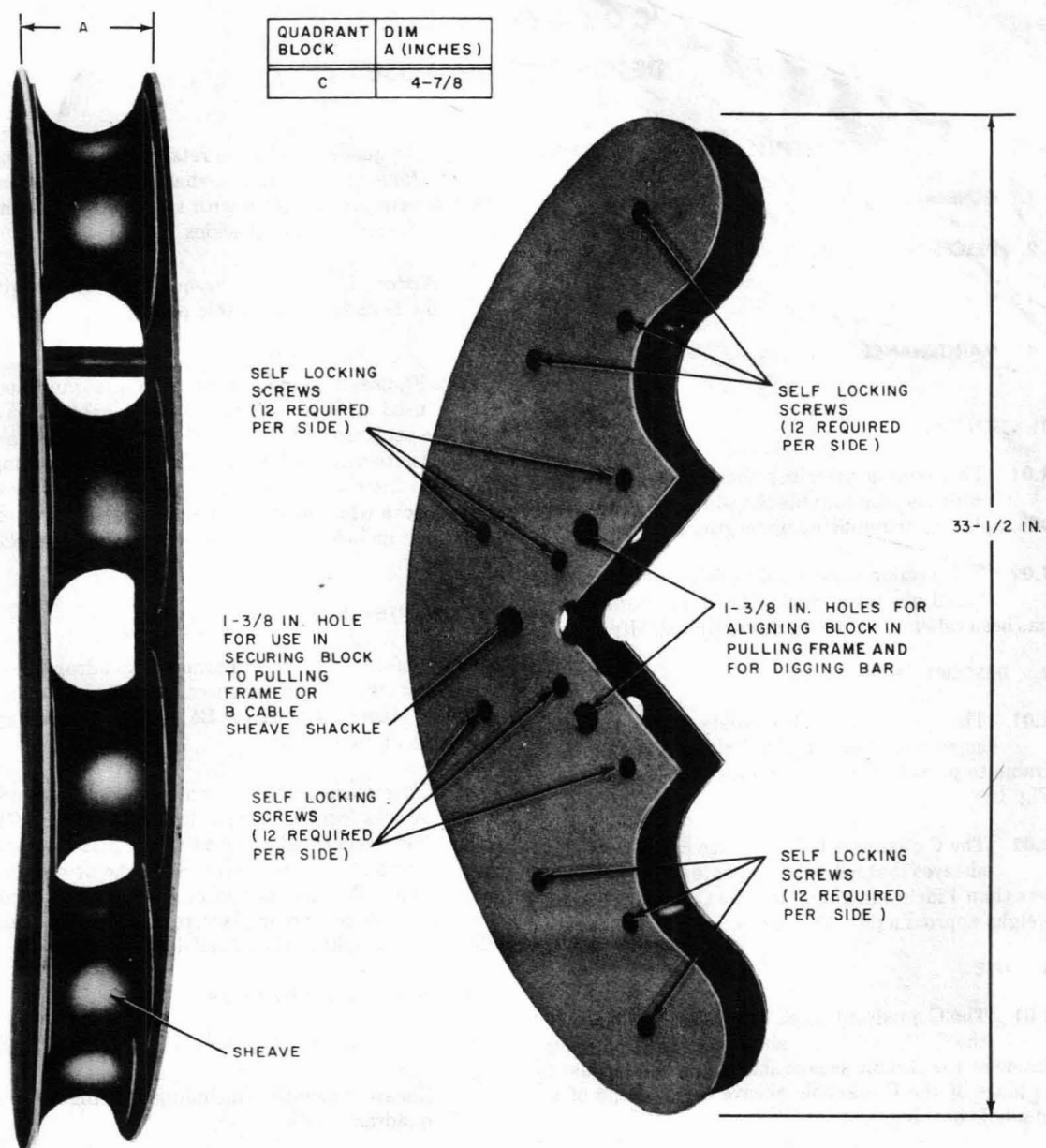


Fig. 1—C Quadrant Block

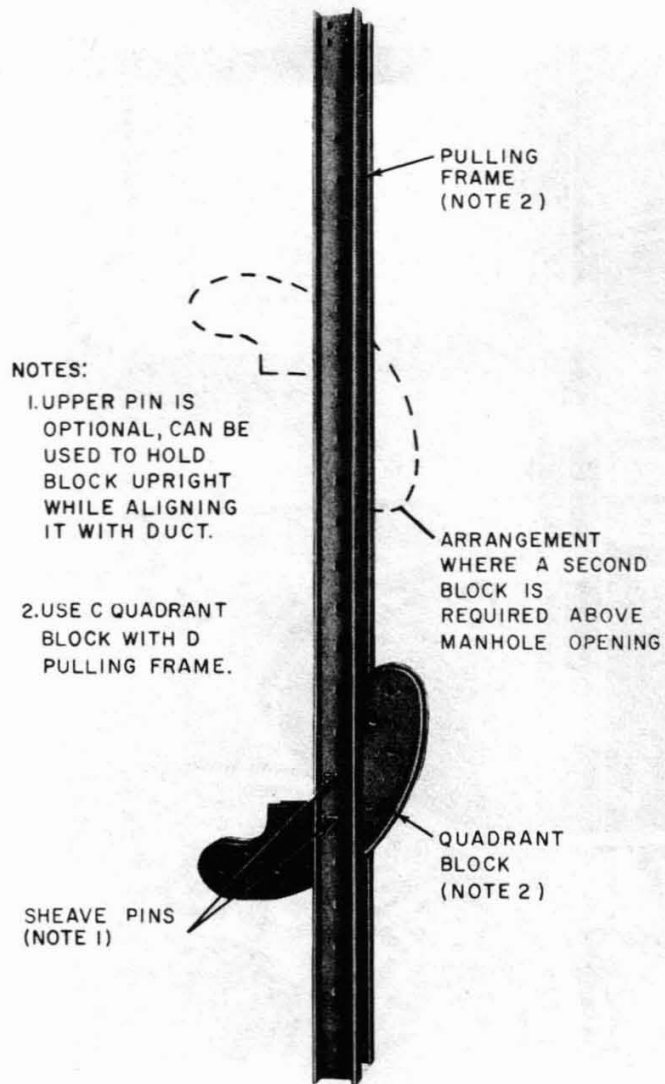
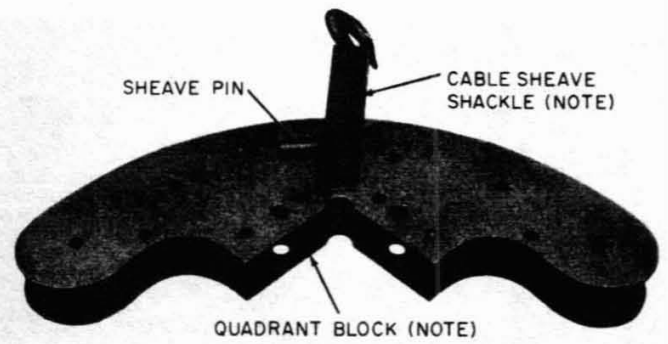


Fig. 2—Quadrant Block Installed in Pulling Frame



NOTE:
USE C CABLE SHEAVE SHACKLE WITH C QUADRANT BLOCK.

Fig. 3—Cable Sheave Shackle Attached To Quadrant Block

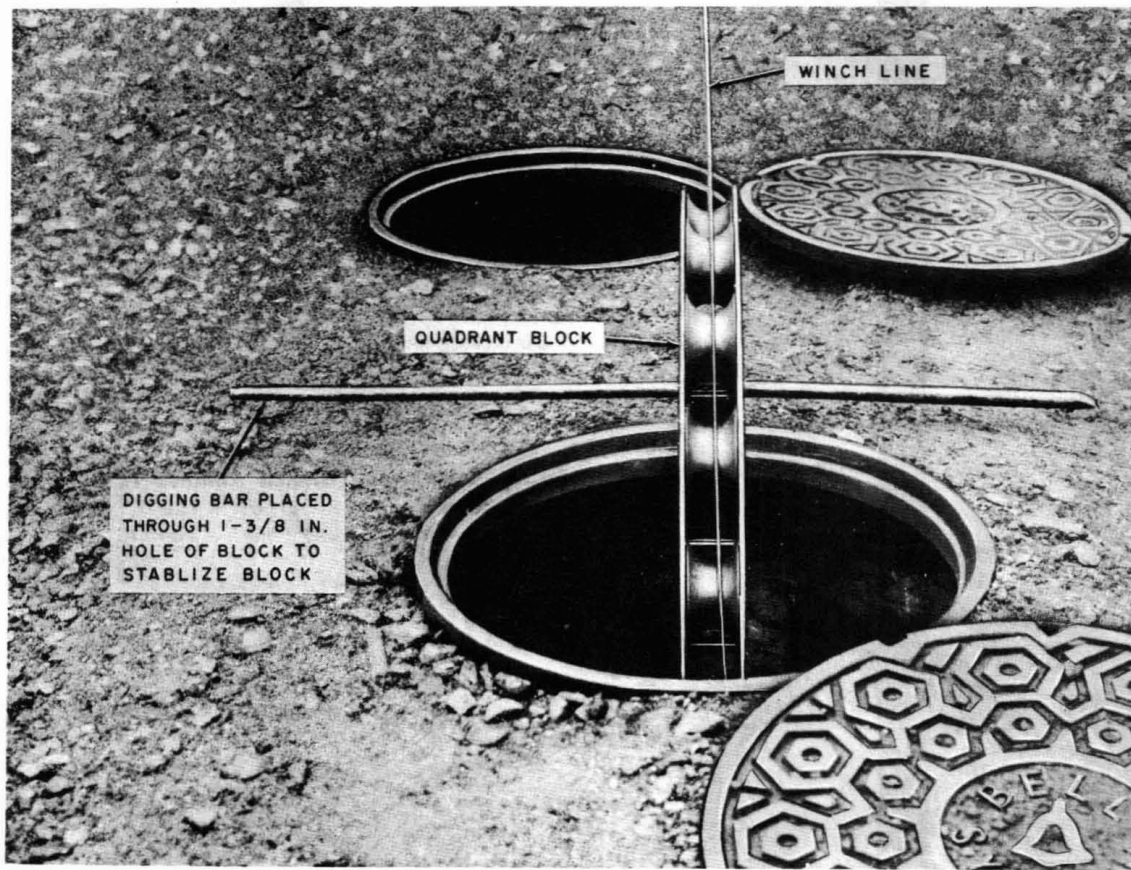


Fig. 4—Quadrant Block Positioned on Edge of Manhole