

## Precision Triple Supply Monitor in MSOP Consumes Only 20 $\mu$ A

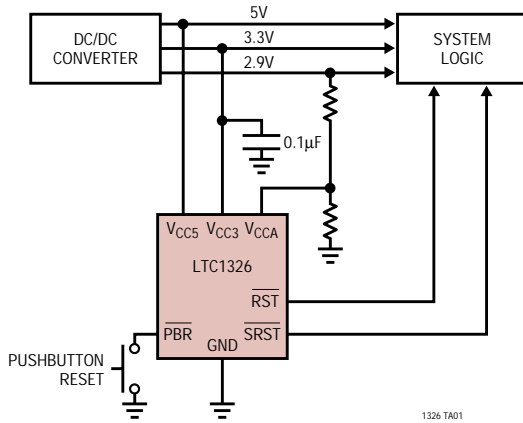
The **LTC1326** is a triple supply monitor intended for systems with multiple supply voltages. It provides micropower operation, small size and high accuracy supply monitoring.

Tight 0.75% threshold accuracy and glitch immunity ensure reliable reset operation without false triggering. The 20 $\mu$ A typical supply current makes the **LTC1326** ideal for power-conscious systems.

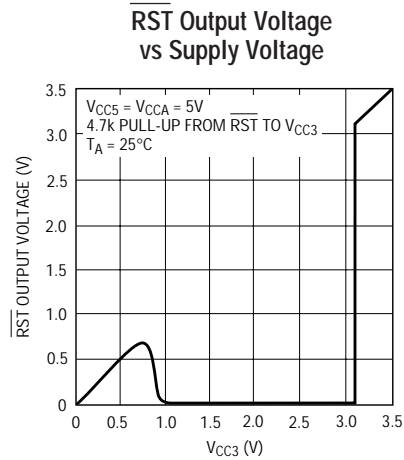
The  $\overline{\text{RST}}$  output is guaranteed to be in the correct state for  $V_{CC3}$  down to 1V. The **LTC1326** may also be configured to monitor any one or two VCC inputs instead of three, depending on system requirements.

A manual pushbutton reset input provides the ability to generate a very narrow "soft" reset pulse (100 $\mu$ s typ) or a 200ms reset pulse equivalent to a power-on reset. Both  $\overline{\text{SRST}}$  and  $\overline{\text{RST}}$  outputs are open-drain and can be OR-tied with other reset sources.

The **LTC1326-2.5** is also available for applications requiring 3.3V, 2.5V and an adjustable output.



1326 TA01



1326 TA02

Source: LTC1326 Data Sheet  
[www.linear-tech.com/notebook.html](http://www.linear-tech.com/notebook.html)