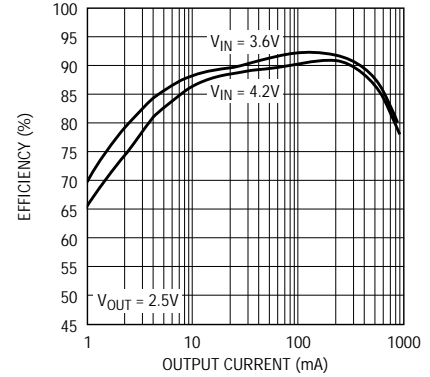
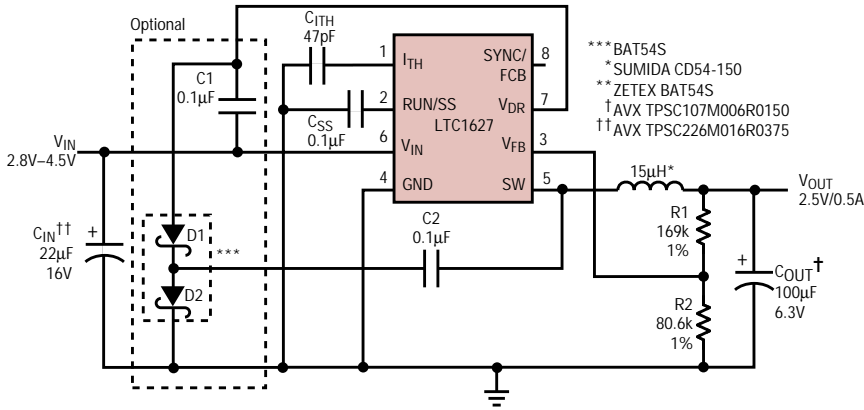


Synchronous Step-Down Converter Operates from Single Li-Ion Cell

The simple circuit below is capable of delivering 500mA at 2.5V from a single Li-Ion cell. The **LTC1627** operates at a constant 350kHz switching frequency and incorporates power saving burst mode to maintain high efficiency at light

loads. D1, D2, C1 and C2 comprise an optional bootstrapped charge pump that generates a negative voltage at the V_{DR} pin to allow the internal top P-channel MOSFET to exhibit low switch $R_{DS,ON}$ at low input voltages.

Single Lithium-Ion to 2.5V/0.5A Regulator



Source: Linear Technology Magazine, August 1998
www.linear-tech.com/portable.html