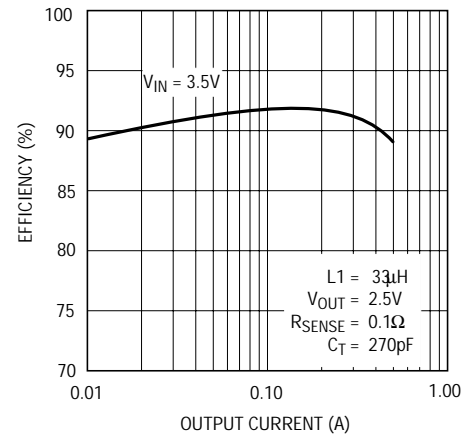
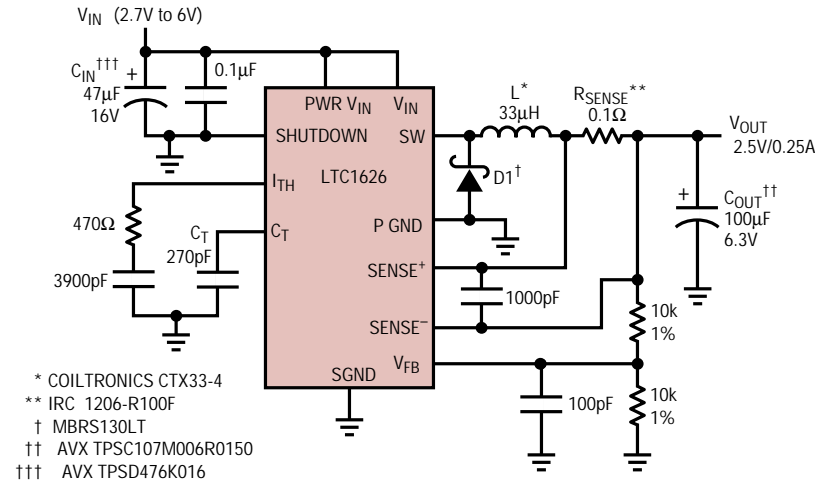


# Single Li-Ion Step-Down Converter Delivers up to 600mA

This circuit is ideal wherever it's necessary to operate off a single Li-Ion, which has an operating range of 4.2V down to 2.7V. The **LTC1626** step-down DC/DC converter smoothly shifts from a high efficiency switch-mode DC/DC regulator to a low-dropout (100% duty cycle) linear regulator as the battery

cell discharges. Efficiencies of greater than 90% are maintained from 20mA to 250mA of load current with a 3.5V supply voltage. Current mode control gives excellent start-up and short-circuit recovery characteristics and burst mode maintains high efficiency at light loads.



Source: Linear Technology Magazine, August 1997  
[www.linear-tech.com/portable.html](http://www.linear-tech.com/portable.html)

Battery  
Chargers

Desktop  
PC Power

Notebook  
PC Power

Portable  
Equip Power

Distributed  
Power

Isolated  
Power

Off-Line  
Power Supplies

Power  
Management

Appendices