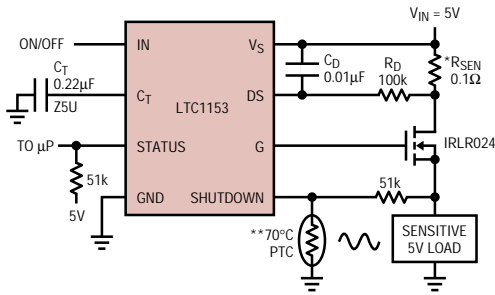


Electronic Circuit Breaker Protects Sensitive Loads

Fault conditions can quickly put stress on power sources and also the loads themselves. Without a protective device to interrupt power during fault conditions, the supply can be overloaded or a load can overheat. The **LTC1153** is a high side MOSFET switch controller device with built-in circuit breaker which turns off the MOSFET switch in the event of a fault. There is built-in automatic reset, along with an input for thermal shutdown. The trip delay and reset times are fully adjustable. With a low 20µA (max) standby current, the

LTC1153 can also be used in battery-powered equipment to protect the battery without reducing battery life. The switch can also be controlled with logic input, and a status indicator reports fault conditions to a processor.

The **LTC1153** is available in 8-lead DIPs and SO packages. Temperature ranges include commercial (0°C to 70°C) and industrial (-40°C to 85°C).

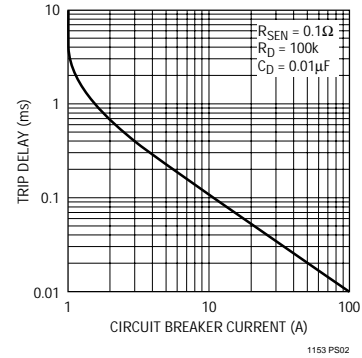


ALL COMPONENTS SHOWN ARE SURFACE MOUNT.
 * IMS026 INTERNATIONAL MANUFACTURING SERVICE, INC. (401) 683-9700
 ** RL2006-100-70-30-PT1 KEYSTONE CARBON COMPANY (814) 781-1591

1153 P801

Source: LTC Applications Dept.
www.linear-tech.com/pwrmgmt.html

Trip Delay



Battery
Chargers

Desktop
PC Power

Notebook
PC Power

Portable
Equip Power

Distributed
Power

Isolated
Power

Off-Line
Power Supplies

Power
Management

Appendices