

E1C Modules (4-Port)



DESCRIPTION

DRT's E1C modules are used in a DRT1000C system to output collected audio to an attached E1 device. The output data uses HDB3 line encoding and is transmitted using the CRC4 framing standard. Each E1C module supplies four lines for outputting audio and each line provides output for 30 half-duplex channels so that each E1C module can output up to 120 half-duplex channels depending on the system's receiver resources. Each E1C module utilizes a total of 128 time slots (120 audio channels plus 4 frame and 4 status time slots).

- E1C 4-port module is a standalone module that may be placed in any slot in which a WPM3 may be placed in a DRT1183C or DRT12xxC system. Up to seven 4-port E1 modules may be installed; however, the number of E1 modules to be installed should be calculated in light of the number of WPMs available to process collected signals.

The E1C modules for DRT 1000 systems are installed by DRT. A status LED on the module front panel indicates whether the module is operating properly.

Interfaces

Two E1/T1 Connectors (RJ-45 type). Each connector supports two E1 lines (ports) for a total of four E1 ports.

E1C 4-Port Pinouts

Pin	Ports 1 & 2 Connector	Ports 3 & 4 Connector
1	TX+2	TX+4
2	TX-2	TX-4
3	TX+1	TX+3
4	RX+1	RX+3
5	RX-1	RX-3
6	TX-1	TX-3
7	RX+2	RX+4
8	RX-2	RX-4

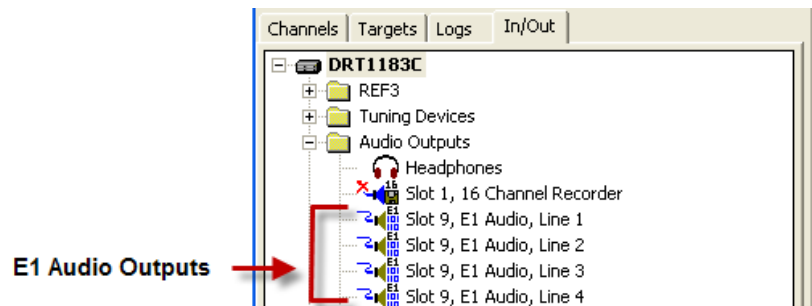
Module-to-System Compatibility

Module Front Panel	Module Name	DRT Cable/PN	DRT Hardware Compatibility	Alaska Release
E1C-4	E1C 4-port	428-02465	DRT1183C, DRT12xxC	5.4.6*, 5.5.x, 5.6.x, 5.7.x and above

* For Alaska release 5.4.6, only two ports, marked 1/2 on the front panel are available.

Configuration

The E1 output may be configured using *Alaska*, the *DRT1000 System Software* Graphical User Interface (GUI) for each targeted format.



Physical/Environmental

Operating Temperature Range: E1 module itself is rated for -20°C to +80°C (-4° to +176°F); however, the temperature limits for the system in which the E1C module is placed still apply.

Size: PMC form factor, consumes one module slot in DRT1000 system; 3U high

Power Consumption: E1C-4 is 7.5W (5.6W for the E1 Card and 1.9W for the E1 carrier card).

Approved by DoD/OSR for public release under 14-S-2219 on 4 August 2014. Data, including specifications, contained within this document are summary in nature and subject to change without notice.

12409 Milestone Center Drive, Germantown, MD 20876-7114
Phone: 855-401-4185 ~ Fax: 301-916-5787 ~ www.drtd.com ~ international@drtd.com

Rev. 1.3-INT, January 2014
© Digital Receiver Technology, Inc., 2014