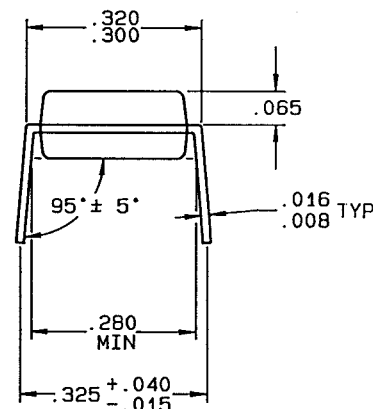
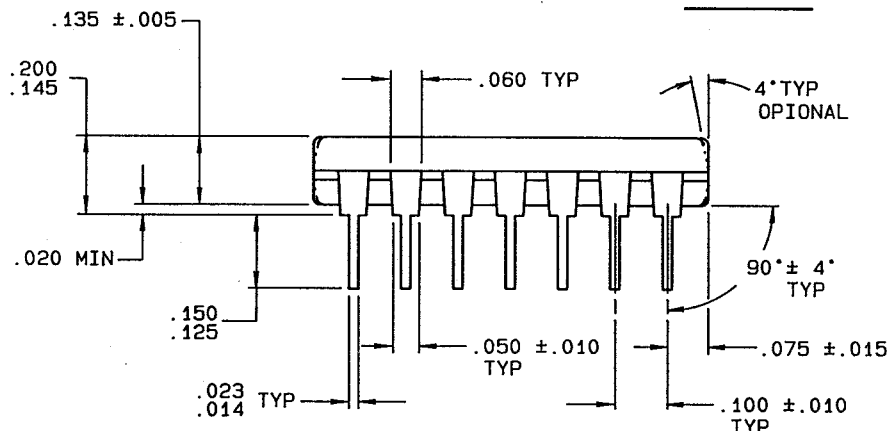
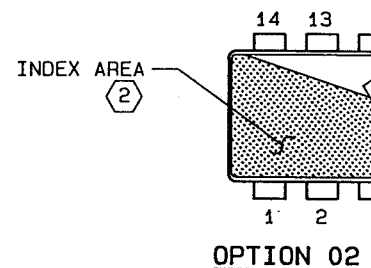
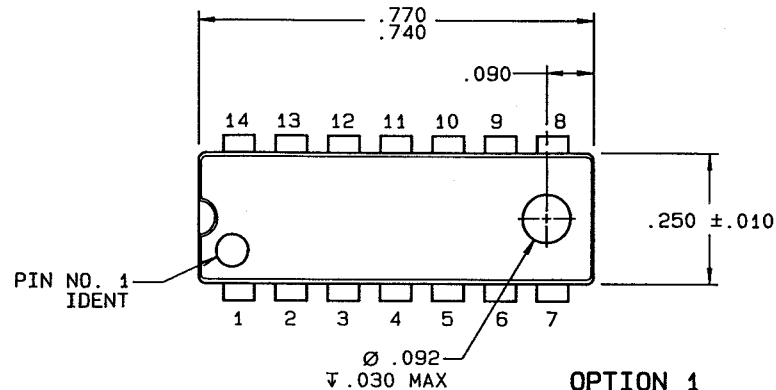


THIS DRAWING IS THE PROPERTY OF NATIONAL SEMICONDUCTOR CORPORATION. NO USE THEREOF SHALL BE MADE OTHER THAN AS A REFERENCE FOR PROPOSALS AS SUBMITTED TO NATIONAL SEMICONDUCTOR CORPORATION FOR JOBS TO BE EXECUTED IN CONFORMITY WITH SUCH PROPOSALS UNLESS THE CONSENT OF SAID NATIONAL SEMICONDUCTOR CORPORATION HAS PREVIOUSLY BEEN OBTAINED. NO PART OF THIS DRAWING SHALL BE COPIED OR DUPLICATED OR ITS CONTENTS DISCLOSED. THE INFORMATION CONTAINED ON THIS DRAWING IS CONFIDENTIAL AND PROPRIETARY.

REVISIONS



LTR	DESCRIPTION	E.C.N.	DATE	BY/APP'D
D	LEAD SPREAD WAS: .325+.025/- .015 REDRAWN	01701	06-22-84	OC/TM
E	REVISE NOTES AND DIMS IN TOP, FRONT AND SIDE VIEWS ADD INDEX AREA TO OPT 2	06216	10-3-88	PG/JF
F	.320/.300 WAS .325/.290	06712	02-22-89	PG/



NOTES: UNLESS OTHERWISE SPECIFIED

- STANDARD LEAD FINISH:
300 MICROINCHES MINIMUM TIN/LEAD 85/15 OR
200 MICROINCHES MINIMUM TIN/LEAD 60/40 OR 63/37
ON ALLOY 42, COPPER OR EQUIVALENT.

- INDEX AREA: A NOTCH OR LEAD #1 IDENTIFICATION MARK SHALL BE LOCATED ADJACENT TO LEAD #1 AND WITHIN THE SHADED AREA AS SHOWN.

APPROVALS		DATE	 NATIONAL SEMICONDUCTOR CORPORATION 2900 Semiconductor Drive, Santa Clara, CA 95052-8090	
DRAWN O. CAMPBELL		06-22-84		
DFTG. CHK. W. A. Guley		03/01/89	MOLDED DIP (N), 14 LEAD,	
ENGR. CHK. M. J. M. M.		3 12 189		
APPROVAL		1 1		
 PROJECTION INCH MM			SCALE N/A	SIZE B
			DRAWING NUMBER MKT-N14A	REV F
FORMERLY: N/A			SHEET 1 OF 1	