

Scanning The 56th Presidential Inauguration

This Month, History Will Be Made On The Steps Of The Capitol Building As The New President Is Sworn In. Here's How To Listen.

by Alan Henney, alan@henney.com

"Much of the Secret Service traffic is encrypted, although we had reports that the advance teams during this past campaign cycle often communicated in the clear."

Flanked by Secret Service agents, U.S. President George W. Bush and First Lady, Laura Bush, travel the inaugural parade route inside an armored limousine headed toward the White House after renewing the Oath of Office earlier in the day at the Capitol with thousands of spectators in attendance. (Public domain photo)

America's new President will take the Oath of Office on January 20, 2001. For the country as a whole, it's a unique federal holiday that observes the peaceful transfer of government. But for scanner listeners, the inauguration offers exciting monitoring opportunities unlike any other occasion.

If you are in the Washington, D.C. area, or plan to visit it for this historic occasion, this guide is a good starting point for your monitoring activities. Please share your findings with the rest of us on the Scan-DC email list (see www.qth.net). Even if you can't witness history in person on that day, much of what follows will still be useful for when you do visit our nation's capital.

Power Players

When it comes to the inauguration, there are three main players involved.

The first is the Presidential Inaugural Committee (PIC), which relies on private donations and is directly responsible to the elected president. It's formed after each general election. PIC organizes, plans, and executes most inaugural celebration activities. The PIC is responsible for selecting participants in the parade and other official events, assigning credentials to media covering the inauguration and surrounding festivities, and answering questions about inaugural events.

For communications in the past, PIC has used a 900 MHz business trunked system, various UHF business band repeater and simplex channels, cellular and text pagers.

The second is the Joint Congressional Committee on Inaugural Ceremonies (JCCIC), which plans and executes all inaugural activities at the U.S. Capitol, including the inaugural swearing-in ceremony of the president and vice president and the traditional inaugural luncheon that follows. (See <http://inaugural.senate.gov/>.)

The third player is the Joint Task Force-Armed Forces Inaugural Committee (JTF-AFIC), which is charged with coordinating all military ceremonial participation and support for the presidential inauguration. Military participation traditionally includes musical units, marching bands, color guards, firing details and salute batteries. JTF-AFIC also provides a limited amount of approved logistical support.

JTF-AFIC is affiliated with the Military District of Washington (MDW) and its communications systems, which are explained in the military section. (See www.jfhqncr.northcom.mil/afic/.)

Federal Agencies

U.S. Capitol Police

Capitol Police channel usage varies from day to day. The department tends to use the first three channels for routine dispatching, and its last two for specialized units, command staff, and protection details. Specialized USCPD officers have additional simplex channels beyond 10, which often use the input or output frequencies of channels 3, 4, or 5 but with a different CTCSS or DCS (try the inputs of 164.6, 164.625, and 164.8).

Alan Henney is the editor of the "Capitol Hill Monitors" newsletter and co-author of the *Washington-Baltimore Scanner Almanac*. Electronic newsletters are free, see <http://henney.com/chm>.

Scanner Frequency Abbreviations

p - paging	r - repeater
t - trunked	d - duplex
s - simplex	

While traveling, USCPD officers have used the common-agency channels of 163.1 and 168.35, either simplex or repeated. The department continues to use analog radios.

U.S. Capitol PD Channels

169.2250	r/s	[156.7]	CH1/6
165.5375	r/s	[118.8]	CH2/7
170.1750	r/s	[107.2]	CH3/8
162.2500	r/s	[146.2]	CH4/9
162.6125	r/s	[127.3]	CH5/10

Other U.S. Capitol Hill Radio Users

167.8875	p	[None]	House Republican Pager
168.3125	p	[None]	House Democrat Pager
173.6375	r	[Astro]	Supreme Court Security
406.3875	r	[d723]	Capitol Tours
408.1250	r	[136.5]	Library of Congress Security
409.5125	r	[d073]	Govt Printing Office Security
416.1500	p	[None]	Capitol Emerg Alerting Sys

National Park Service - U.S. Park Police

166.7250	r/s	[127.3]	CH1/6 Secondary
166.9250	r/s	[127.3]	CH2/7 Dispatch
167.0750	r/s	[127.3]	CH3/8 Administrative
166.8500	s	[127.3]	CH4 Tactical

Federal Protective Service

415.2000	r/s	[131.8/Astro]	CH1/2
411.2750	r/s	[131.8/Astro]	CH3/4
414.4750	r/s	[131.8/Astro]	CH5/6

NTIA Passport Trunked System

Most of the Smithsonian museums have transitioned to a Passport radio system in downtown Washington. Passport, a variant of LTR trunking, is not "trackable" using scanners, but it is analog and can be monitored on a scanner.

407.0750	t	Voice
407.3750	t	Voice
408.5500	t	Voice
408.8750	t	Voice
410.3125	t	Voice

Health & Human Services Department

HHS operates, funds, and/or oversees several medical teams that will be available during inaugural events. The Disaster Medical Assistance Teams (DMAT) provide medical care during a disaster or other event.

The National Disaster Medical System (NDMS) assists local agencies with the medical impacts of major peacetime disasters and provides support to the military and the Department of Veterans Affairs for casualties brought back to the United States.

The National Medical Response Team (NMRT) provides medical and decontamination services and/or assists agencies in hazardous materials environments. The D.C. NMRT group uses



A military honor guard escorts the presidential limo along the parade route. (DoD photo)

talkgroups on both the old and new Arlington County trunked system.

407.1250	r	[Astro/100.0]	DMAT
409.0000	r	[Astro/100.0]	DMAT
406.8625	s/r	[Astro/141.3]	NDMS 1/2
407.2625	s/r	[Astro/141.3]	NDMS 3/4
407.4625	s/r	[Astro/141.3]	NDMS 5/6
409.0750	s/r	[Astro/141.3]	NDMS 7/8
412.8375	s	[Astro/141.3]	NDMS 9
412.8625	s	[Astro/141.3]	NDMS 10
412.8750	s	[Astro/141.3]	NDMS 11
412.9000	s	[Astro/141.3]	NDMS 12
412.8875	s	[Astro/141.3]	NDMS 13
409.4625	s	[Astro/141.3]	NDMS 14
34096	t	(hex 853)	NMRT-A (Arl. A1H-old trunk)
35344	t	(hex 8A1)	NMRT-B (Arl. A1I-old trunk)
35376	t	(hex 8A3)	NMRT Cmd (Arl. A1J-old trunk)
00045	t	(hex 02D)	NMRT-A (Arl. A1H-new trunk)
00046	t	(hex 02E)	NMRT-B (Arl. A1I-new trunk)
00047	t	(hex 02F)	NMRT Cmd (Arl. A1J-new trunk)

Federal Emergency Management Agency

FEMA, much like HHS, sponsors several teams that will likely stage during the inauguration. FEMA has a standard set of

channels for use nationwide, and others specifically intended for the National Capital Region.

Mobile Emergency Resource Support (MERS) teams provide electronic communications support to local public safety agencies.

FEMA will probably place the Fairfax and/or Montgomery US&R teams on "alert status" during the inauguration. They specialize in rescuing persons trapped in confined spaces. Both teams will likely have their county and perhaps their FEMA radios available for use.

406.4500	s/r	[Astro]	NCR 1-4 DC Main
409.8625	s/r	[Astro]	NCR 5-6 DC Alternate
412.8875	s	[Astro]	NCR 7
412.9125	s	[Astro]	NCR 8
410.8625	s/r	[Astro]	NCR 9/10
407.4500	s/r	[Astro]	NCR 11/12
408.0625	s/r	[Astro]	NCR 13/14
409.4625	s	[Astro]	NCR 15
418.4625	s	[141.3]	NCR Common
406.2625	s/r	[Astro]	FEMA 1/2
407.0625	s/r	[Astro]	FEMA 3/4
407.6625	s/r	[Astro]	FEMA 5/6
409.0625	s/r	[Astro]	FEMA 7/8
410.4625	s/r	[Astro]	FEMA 9/10
407.4500	s/r	[Astro]	FEMA 11/12
412.8250	s	[Astro]	MERS 1
412.8500	s	[Astro]	MERS 2
412.8375	s	[Astro]	MERS 3
412.8625	s	[Astro]	MERS 4
412.8750	s	[Astro]	MERS 5
412.9000	s	[Astro]	MERS 6
412.8875	s	[Astro]	MERS 7
412.9125	s	[Astro]	MERS 8
410.8625	s/r	[Astro]	MERS 9/10
407.4500	s/r	[Astro]	MERS 11/12
408.0625	s/r	[Astro]	MERS 13/14
409.4625	s/r	[Astro]	MERS 15
408.8625	s/r	[Astro/141.3]	US&R 1/2
409.2625	s/r	[Astro/141.3]	US&R 3/4
409.6625	s/r	[Astro/141.3]	US&R 5/6
409.8625	s/r	[Astro/141.3]	US&R 7/8
410.2625	s/r	[Astro/141.3]	US&R 9/10
410.6625	s/r	[Astro/141.3]	US&R 11/12
412.8250	s	[Astro/141.3]	US&R 13
412.8500	s	[Astro/141.3]	US&R 14
04784	t	(hex 12B)	Mont. Co. trunk (74-K)

Federal Communications Commission

The FCC was active during past events in Washington, often tracking pirate broadcasters operated by protesters. Also of concern are threats that activists will interfere with public safety communication, or the remote possibility that a radio transmitter could be used as a detonator.

167.0500 r [Astro/173.8] FCC field info

Federal Bureau of Investigation

FBI involvement is limited. Agents provide intelligence and advice. In addition, the FBI's SWAT and other specialty units such as the Joint Terrorism Task Force (JTTF) will be on stand-by. They could use one of many FBI channels, but this is the primary.

167.4375 r [167.9] D.C. Administrative



Some presidential inaugural events, like this fireworks display during the 2005 Inauguration, are open to the public. They present a unique opportunity for scanner listeners to monitor history in the making. (DoD photo)

State Department

The State Department provides security for the Secretary of State and foreign official visitors, except heads of state, who are protected by the Secret Service. The standard CTCSS was 151.4, but all channels appear to use Astro now.

407.8625	r	[Astro]	Bldg security "Side Door"
408.6000	r	[Astro]	Protection details
407.6000	r	[Astro]	Protection details
409.7125	r	[Astro]	Protection details

Secret Service

Secret Service agents protect the president, past presidents and foreign heads of state. Since the inauguration has been designated a national special security event (NSSE), the Secret Service assumes its role as the lead agency for the design and implementation of the operational security plan.

Much of the Secret Service traffic is encrypted, although we had reports that the advance teams during this past campaign cycle often communicated in the clear. The Department of Homeland Security Common frequency, 166.4625, once known as Treasury Common, is often a federal law enforcement command post channel. The federal agencies have a slew of interop channels (see below).

One may find the Secret Service or an allied agency using additional VHF frequencies not normally used in Washington. Try the White House Communications Agency channels listed in the military section, too.

165.7875	s	[103.5/Astro]	Baker
165.3750	s	[103.5]	Charlie
165.2125	s	[103.5/Astro]	Mike
164.6500	s	[103.5]	Tango
164.8875	s	[103.5]	Oscar
164.4000	s	[103.5]	Papa
165.6875	s	[103.5/Astro]	Washington Field Office
170.0000	s	[103.5]	WFO Alternate
166.4625	s	[None]	DHS-Common 1 (was T-Common)

166.5875	s	[None]	DHS-Common 2 (was T-Common)
167.0125	s	[Astro]	Vice President's Detail
167.0375	s	[Astro]	President's Detail

Uniformed Division, Secret Service

The UDSS provides security at the White House and selected federal and foreign/diplomat facilities in the Washington area.

162.0750	r	[Astro]	White House 1 (169.9375 in)
163.3125	r	[Astro]	White House 2 (170.4375 in)
170.0000	s	[Astro]	White House Admin/Blair House
164.1750	p	[None]	White House Notification System
166.2000	s	[103.5]	Vice President's Residence
162.3125	r	[Astro]	Foreign Missions 1 (171.7625 in)
164.4375	r	[Astro]	Foreign Missions 2 (172.5625 in)
170.9875	s	[Astro]	Foreign Missions 3
170.0000	s	[127.3]	Inter Ops (Secret Service common)
164.1000	s	[Astro]	Canine Tac

Immigrations and Customs Enforcement

136.3750	s	ICE Aircraft
164.7750	r	Agents
165.2375	r	ICE Aircraft and Agents
282.4250	s	ICE Aircraft

Federal Common-Use, Joint Law Enfo and Incident Response Frequencies

These common-use frequencies are available for use on a shared basis by all federal agencies: 163.1/168.35, 163.7125, 168.6125, 173.625/167.1375, 407.525/416.525, 409.05/418.05, 409.075/418.075, 409.3375/418.3375, 412.825, 412.8375, 412.85, 412.8625, 412.875, 412.8875, 412.9 and 412.9125. The older wide-band channels included: 408.4, 418.05, 418.075 and 418.575.

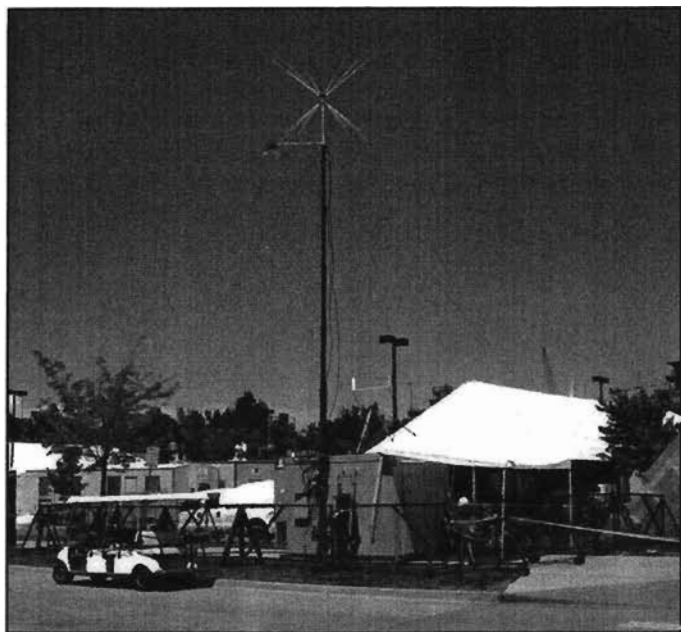
FCC Public Notice DA 01-1621 established the following frequencies for joint law enforcement. They are programmed in new radios used by Federal agencies in the D.C. area and are designated as "L-E" channels. All use Astro transmission except for 167.0875, which is both Astro and analog with a 167.9 Hz CTCSS: 167.0875/162.0875, 167.25/162.2625, 167.75/162.8375, 168.1125/163.2875 and 168.4625/163.425. The UHF versions are: 409.9875/418.9875, 410.1875/419.1875, 410.6125/419.6125, 414.0375, 414.0625, 414.3125 and 414.3375.

The same notice designated these as joint incident response ("I-R") channels: 169.5375/164.7125, 170.0125/165.25, 170.4125/165.9625, 170.6875/165.575 and 173.0375/167.325. The UHF set is: 410.2375/419.2375, 410.4375/419.4375, 410.6375/419.6375, 410.8375/419.8375, 413.1875 and 413.2125.

Military Agencies

Armed Forces Inaugural Committee

During past inaugurations, AFIC cut its radio traffic almost in half through the use of computer networks and that trend will likely continue. But AFIC has always made a partial appearance on repeater and simplex voice channels in the lower VHF band. During each inauguration the frequencies vary but always came from the 138-144 MHz or 148-151 MHz band. AFIC's



These mysterious shipping containers with attached antenna towers are used to jam radio communication (presumably to thwart a terrorist attempt to activate a hidden IED). The first inauguration for which the jammers were deployed was in 2005. They are typically activated prior to the arrival of the presidential motorcade; a mobile version is deployed in pairs for use with motorcades.

command and control nets in recent times have also operated on Virginia's Fort Belvoir's trunked system, which has been consumed by the JFHQ-NCR 380 MHz trunked network.

Joint Force Headquarters – National Capital Region

The recently formed JFHQ-NCR is responsible for helping to plan and coordinate military assistance for homeland defense and civil support in the region. Joint-NCR was formally activated on September 22, 2004, and provides a common command structure for all Defense Department forces, including the Coast Guard in the greater Washington, D.C., area. Major component commands include the Army Military District of Washington, the Naval District of Washington (NDW), the Marine Corps National Capital Region Command, and the 11th and 89th Air Force Wings.

The Army's MDW has overall responsibility for the coordination and operation of DoD participation in government ceremonies in the capital area. MDW will be involved in almost every aspect of the ceremonies from security to transportation to logistical support. MDW's command, operations and logistics nets are known as "State Sword."

In addition to overseeing the DoD elements, JFHQ-NCR's mission is to coordinate and act as a liaison with local law enforcement and first responders throughout the NCR and beyond. Some talkgroups on its trunked network are patched or patched-capable with civilian public safety channels.

During the 2005 inauguration, the JFHQ-NCR 380 MHz trunked network was in its infancy. Today it is a massive system of networked sites that links facilities under its command. Some of the system's talkgroups are encrypted, but many are not. Those sites closest to D.C. are given here.

Users can roam the system and operate off any networked radio site. That makes monitoring difficult since there is no guar-

antee that one of the users will always be affiliating on the talkgroup one is monitoring on a particular site.

For a list of talkgroups, see <http://tinyurl.com/4z3zc2>. Talkgroups that will probably apply most to the 2009 Inauguration include the 200s, which are used at the Pentagon and by the Pentagon Force Protection Agency, the 300s at Ft Myer, and 400s by JFHQ-NCR.

Also try the following:

001-0101 Fort Belvoir, VA 381.675, 381.825, 381.975, 385.0125, 385.2125, 385.8875, 386.1875, 386.3375.

001-0303 Bolling AFB, DC 386.0625, 386.9625, 388.2625, 388.8875, 389.1625, 389.2375, 389.4875.

001-0606 Bethesda NMMC, MD 385.0875, 385.325, 385.725, 385.9375, 387.175, 387.475, 387.975.

002-0101 Ft Myer, VA 380.0625, 380.325, 380.375, 380.625, 380.675, 380.825, 380.975, 381.0875, 381.2375, 381.2875, 381.625, 381.775, 381.925.

002-0202 Ft McNair, DC 380.2125, 380.525, 380.775, 381.1375.

007-0202 Army Research Lab Adelphi, MD 389.575.

008-0101 Tysons Corner, VA 380.075, 380.425, 380.725.

009-0101 Silver Hill, MD 380.275, 380.575, 380.875, 381.7375.

010-0202 NGA Bethesda, MD 385.8625, 387.1875, 387.4625, 387.7875, 389.075.

00C-0101 Walter Reed AMC, DC 385.7125, 385.9125, 386.2125, 386.5625, 386.8125.

White House Communications Agency

Another important military element that provides support to the inauguration as well as the president is the White House Communications Agency (WHCA). WHCA personnel routinely use Secret Service channels and DoD talkgroups.

169.9250	s	Delta
167.9000	s	Hotel, White House Motor Pool
166.7000	s	November
166.2000	s	Naval Support Facility, Camp David
166.5125	s	Sierra
167.0250	p	Whiskey (old paging channel)
162.6875	d	Yankee (old phone patch base)
171.2875	d	Zulu (old phone patch mobile)
375.0000	s	Helipad Comms

Andrews Air Force Base

Andrews AFB channels may be especially interesting prior to and after the inauguration as various VIPs arrive and depart. The base has its own set of talkgroups on its 380 MHz trunked system.

17a-0101 Andrews AFB, MD 385.2125, 385.3125, 385.9, 385.9125, 386.0375, 386.2, 386.3375, 386.6375, 386.8.

Andrews Air Force Base

118.400 / 349.000	Andrews Tower
119.300 / 335.500	Arrival
122.850 / 372.200	Pilot to Dispatch
124.000 / 279.575	Arlington Cemetery Fly-bys
125.650 / 348.725	Departure



Petty Officer 2nd Class John Leo, U.S. Coast Guard, and Senior Airman Daniel Tercero, U.S. Air Force, enable antennas during an operations check January 7, 2005, in preparation for the 55th Presidential Inauguration. (DoD photo by Tech. Sgt. Kevin J. Gruenwald, U.S. Air Force)

141.550 / 378.100	Command Post & Wing Ops
141.700 / 292.200	1st Helo Squad (89th A/W) ("Mussel")
251.500 / 362.900	Navy Ops
344.600	Metro (WX)
351.200	Liberator (756th ARS) Command Post

USMC Executive Flight Squadron

The Marine Corps presidential and vice presidential executive flight squadron is known in military circles as "HMX-1," to the Secret Service as "Nighthawk," and to the American taxpayer as "Marine 1" (or Marine 2). Helos are based in Quantico, but often stage in Anacostia.

265.800	Squadron Common (Quantico)
273.950	Squadron Operations
276.400	Squadron Operations
320.400	Squadron Maintenance (Quantico)
355.300	Quantico Base Ops

Coast Guard

156.800	Marine CH16 (Hailing, Distress)
156.850	Marine CH17 (D.C. Harbor Patrol)



Tech Sgt. Paul Coupaud, a Public Affairs representative for Joint Task Force-Armed Forces Inaugural Committee, glances at a book during a Joint Operations Center (JOC) exercise at the Mary Switzer Building in downtown Washington, D.C., January 12, 2005. (DoD photo by Staff Sgt. Matthew Hannen, U.S. Air Force)

157.050	Marine CH21 (CG, Blackjack helos)
157.150	Marine CH23 (CG Sta. Washington)
157.075	Marine CH81 (CG Aux/MSO)
157.175	Marine CH83 (CG, Air Sta. Atl. City)
345.000	Coast Guard UHF Primary
237.900	Coast Guard UHF Secondary
326.150	Coast Guard UHF Working Primary
379.050	Coast Guard UHF Working Secondary

Combat Air Patrols

139.700	Huntress, Coast Guard Helos
139.900	Huntress, Coast Guard Helos
260.900	Huntress
228.900	Huntress
135.525 / 350.250	Guard Dog CAP control

Many thanks go to our local military aviation expert, Ron Perron, for recommending these frequencies.

D.C. Government

D.C. Fire & EMS

Motorola trunked: 852.6125, 852.6375, 852.6625, 852.6875, 852.7125, 852.7375, 852.7625, 852.7875, 855.2125, 855.2375, 855.4625, 856.9875, 857.9875, 858.9875, 859.9875 and 860.9875

Key D.C. Fire/EMS channels:

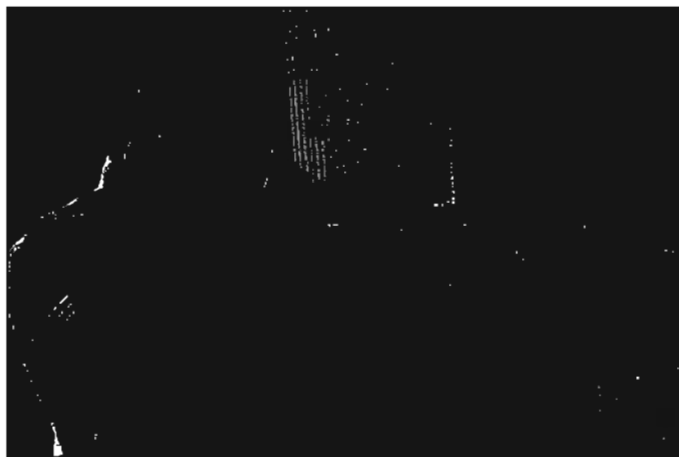
01616	t	(hex 065)	0-01 Dispatch (simulcasts 154.19)
01632	t	(hex 066)	0-02 Main
01648	t	(hex 067)	0-03 Fire Ground 03
01904	t	(hex 077)	0-11 EMS 1
01920	t	(hex 078)	0-12 EMS 2
867.4875	s	[156.7]	0-15 VRS/DIR 2 (veh rpt sys)
867.7625	s	[156.7]	0-16 VRS/DIR 1
02096	t	(hex 083)	A-11 Special Event 1
02112	t	(hex 084)	A-12 Special Event 2
02128	t	(hex 085)	A-13 Special Event 3
02016	t	(hex 07E)	B-03 Fire Ground B3

These talkgroups are on the same trunked system as D.C. Fire/EMS but some may be patched through to the MPD UHF trunked system for coordination purposes.

09936	t	(hex 26D)	NCR-Mutual Aid Fire 1
09968	t	(hex 26F)	NCR-Mutual Aid Fire 2
09984	t	(hex 270)	NCR-Mutual Aid Fire 3
10032	t	(hex 273)	NCR-Mutual Aid Fire 4
34832	t	(hex 881)	DC Prot Svc (bldg security)
35600	t	(hex 8B1)	Traffic Management
59952	t	(hex EA3)	NCR Mutual Aid 1 (fire/police)
59968	t	(hex EA4)	NCR Mutual Aid 2 (fire/police)
59984	t	(hex EA5)	NCR Mutual Aid 3 (police)
60000	t	(hex EA6)	NCR Mutual Aid 4 (police)

Metropolitan Police Department

Talkgroups that will likely be assigned for special use during the inauguration and other special events appear below. Encrypted-only groups have been omitted. Talkgroups will be assigned to various details and elements as required, including MPDs Civil Disturbance Units (CDU), traffic, vending, prisoner control, and Special Operations Division (SOD). Most inau-



Air Force Senior Airman Daniel Tercero, Communications Journeyman assigned to the JTF-AFIC, performs a network operations check using a Motorola VHF Saber, January 10, 2005, in preparation for the 55th Presidential Inauguration. (DoD Photo by Tech. Sgt. Kevin J. Gruenwald, US Air Force)

gural sites and visitor locations are within the 1st, 2nd, 3rd, and 5th districts, which are listed along with the talkgroups likely to be used for special events.

Motorola trunk: 453.45, 460.025, 460.1, 460.15, 460.2, 460.25, 460.275, 460.325, 460.35, 460.375, 460.4, 460.425, 460.45, 460.475 and 460.5

Key MPD Channels

16400	t	(hex 401)	1st District
16432	t	(hex 403)	2nd District
16464	t	(hex 405)	3rd District
16528	t	(hex 409)	5th District
16624	t	(hex 40F)	Citywide 1
21232	t	(hex 52F)	Citywide 2
16656	t	(hex 411)	SOD 1, Special Events
18288	t	(hex 477)	Special Events 1
18320	t	(hex 479)	Special Events 2
18352	t	(hex 47B)	Special Events 3
18384	t	(hex 47D)	Special Events 4
21136	t	(hex 529)	Tactical 1
21168	t	(hex 52B)	Tactical 2
21200	t	(hex 52D)	Tactical 3
21360	t	(hex 537)	Command
458.0375	s	[Astro]	SOD Surveillance 1
453.9375	s	[Astro]	SOD Surveillance 2
460.0625	s	[Astro]	Citywide Surveillance 1
460.3375	s	[Astro]	Citywide Surveillance 2
460.2625	s	[Astro]	Citywide & SOD Surveillance 3

Common Mutual Aid Channels

Suburban police, EMS, and fire personnel will assist with inaugural activities using D.C. Fire/EMS and their own radios. The mutual aid and COG channels are receiving more use during special events. The 800 MHz channels use a CTCSS of 156.7, but by agreement, the COG (also known as RINS) channels may be used for digital or analog intra-agency communication without the 156.7 CTCSS. The VHF channels use no tone.

123.0250	s	Public Safety Helos (helicopter common)
154.2800	s	Fire Mutual Aid 2
154.2950	s	Fire Mutual Aid 1
462.4000	r	Hospital Mutual Aid

866.0125	r	National Calling Channel
866.5125	r	National Tac 1
867.0125	r	National Tac 2
867.5125	r	National Tac 3
868.0125	r	National Tac 4
866.3625	r	Police Mutual Aid
868.5125	r	Council of Governments 1
866.8375	r	Council of Governments 2
867.2375	r	Council of Governments 3
867.4875	r	Council of Governments 4
866.8625	r	Council of Governments 5
867.7625	r	Council of Governments 6

Transportation

Metropolitan Washington Airports Authority

MWAA is the authority that runs Reagan and Dulles airports. It has its own digital Motorola trunked radio system. MWAA police often escort dignitaries to/from the airports using this radio system. Frequencies are: 866.05, 866.675, 866.725, 866.8875, 866.925, 867.2, 867.35, 867.4375, 867.4625, 867.5375, 867.5625, 868.2125, 868.7125 and 868.8.

Washington Metropolitan Area Transit Authority

The WMATA is slowly migrating to a 490 MHz trunked system, but these channels will continue to be used through the inauguration.

161.3850	r/s	CH1/2 Metrobus/rail Police
160.2600	s	Rail Ops
160.3800	s	Rail Ops
160.6200	s	Rail Ops
161.2350	s	Rail Ops

Amtrak and Union Station

160.2900	r	CH1 Yardmaster
160.3500	r	CH2 Train Maintenance
160.4400	r	CH3 Station Ops
160.9200	s	Amtrak Road
161.2950	r	Amtrak Police Primary
161.2050	r	Amtrak Police Tac/Car to Car
173.3750	s	Amtrak Police CID
452.9000	s	Terminal Services

Washington National Airport (Mount Vernon Sector)

118.300 / 306.300	Final East DCAFE
118.950 / 257.200	West 9500' & below TYSON
119.100 / 257.600	Reagan Tower
119.300 / 335.500	Approach ADWAR
119.850 / 322.300	West QJAAY
120.750	Wash Helo Control
121.050 / 343.700	West 10,000' up to FL 230 FLUKY
121.500 / 243.000	Aircraft Emergency
124.000 / 279.575	Andrews for Arlington Flybys ADWFR
124.200 / 269.000	East ENSUE
124.700 / 338.200	Final West DCAFW
125.650 / 348.725	East 9500' & below KRANT
126.550 / 269.500	East 10,000' up to FL 190 DAILY
128.350 / 270.275	South East 19,000' down TO 3000' DEALE

News Media

These frequencies are those commonly used by the media in Washington. Expect to find many temporary frequencies used just for inaugural coverage. During the past four inaugurations,



A spectrum analyzer displays the actual jamming carrier. The center of the jamming carrier moves on a regular basis in automatic mode or it can be set to transmit on a specific center frequency. It is a wide-band carrier that cancels out any narrow-band or digital carriers within 0 to 50 MHz in width.

the FCC allowed the Washington Executive Broadcast Engineers, the local media frequency coordinator, to temporarily assign frequencies from UHF TV Channel 15 (477-482 MHz) to broadcast users. For more info, see www.webe.org/pages/freq.html.

IFB (interruptible fold-back) channels are used to relay broadcast audio to crews in the field. The feed can be interrupted

by the director to provide cues and instructions. Channels used by engineering crews (electronic news gathering) are listed as ENG.

Television Networks

450.4125	s	[136.5]	ABC IFB
455.0875	s	[136.5]	ABC CH1 Desk
455.5875	s	[136.5]	ABC CH2 ENG
450.5875	s	[136.5]	ABC CH3 Couriers
450.0500	s	[107.2]	CBS CH3 Maint 2
450.1500	s	[107.2]	CBS CH1 Maint 1
450.2875	s	[107.2]	CBS CH4 Desk
450.4875	r	[107.2]	CBS CH2 Desk
450.5125	r/s	[107.2]	CBS CH6/10 Techs
450.6125	s	[107.2]	CBS CH11
450.7500	s	[107.2]	CBS CH12
450.8000	s	[107.2]	CBS CH5/9 IFB 1
455.2625	s	[107.2]	CBS CH13
455.2875	s	[107.2]	CBS CH8 Freq 8
455.6125	s	[107.2]	CBS CH7 IFB 2
161.6700	s	[d331]	NBC Desk
450.5500	s	[d306]	NBC CH2 IFB
455.8500	s	[d306]	NBC CH4 IFB

Cable News Networks

450.1875	r/s	[127.3]	CNN CH1/2 ENG
450.8875	r/s	[127.3]	CNN CH3/4 Desk
450.5625	r	[d165]	C-SPAN Field Base
495.4375	r/s	[d243]	Fox News
495.4625	r/s	[d243]	Fox News
412.8250			VOA IFB
412.8375			VOA IFB
412.8500			VOA IFB
412.8625			VOA IFB
415.9375			VOA Two Way
418.0500			VOA Two Way
418.5750			VOA Two Way

Local Stations

153.0500	s	[d331]	WRC Desk
450.4500	s	[d306]	WRC CH1 ENG
455.1500	s	[d306]	WRC CH3 IFB
161.7300	s	[None]	WTTG CH1 Desk
161.7600	s	[None]	WTTG CH2 Alternate
450.1125	r	[d311]	WJLA CH1 Desk
450.2625	r	[d311]	WJLA CH2 ENG
450.7500	s	[141.3]	WUSA CH1 unit-to-unit
450.2125	s	[141.3]	WUSA CH2 unit-to-unit
450.0875	s	[141.3]	WUSA CH3 Sky9
450.1875	r	[141.3]	WUSA CH4 Desk
455.9125	r	[141.3]	Metro Traffic

Check Out The Latest Updates

If you are lucky enough to be in the D.C. area for this exciting occasion, this information will help you nab a front row seat for all the communications action. Please drop me a line and let me know what you discover.

Many thanks go to David Schoenberger for his research. Once locations are selected for the inaugural activities, make certain to consult his Website for specific frequencies. It's located at <http://david.schoenberger.net/scanning/dc/washington.htm>. Also visit The Capital Hill Monitor's Scanner Links Page at <http://henney.com/chm/>.

CQ calendar

15 months of value
January 2009 through
March 2010

2009

2010

This year's calendar brings you 15 spectacular color images of some of the biggest, most photogenic shacks, antennas, scenics and personalities from across the country! Calendar includes dates of important Ham Radio events such as major contests and other operating events, meteor showers, phases of the moon, and other astronomical information, plus important and popular holidays. The CQ Ham Radio Operators calendar is not only great to look at, it's truly useful, too!

New!

\$10.95 ea.

+ \$2 s/h

CQ Communications, Inc.

25 Newbridge Road, Hicksville, NY 11801
Call 1-800-853-9797 or FAX 516-681-2926
www.cq-amateur-radio.com